

Job Name _____
 Job Location _____
 Engineer _____
 Approval _____

Contractor _____
 Approval _____
 Contractor's P.O. No. _____
 Representative _____

LEAD FREE*

Series SPL and FLG
Make Up Spools and Flanges
For Backflow Preventers 2½"-10" (65 – 250mm)

Ames "Make Up" Spools are used when retrofitting a backflow preventer into an installation where an existing backflow preventer is being replaced.

Ames "Make Up" Flanges are used in piping applications where there is a need for additional fitting lay length.

Features

- Extremely Compact Design
- 70% Lighter than Traditional Designs
- 304 (Schedule 40) Stainless Steel Housing & Sleeve
- Groove Fittings Allow Integral Pipeline Adjustment
- Patented Link Check Provides Lowest Pressure Loss
- Unmatched Ease of Serviceability
- Available with Grooved Butterfly Valve Shutoffs
- Available for Horizontal or N Pattern Installations
- Replaceable Check Disc Rubber

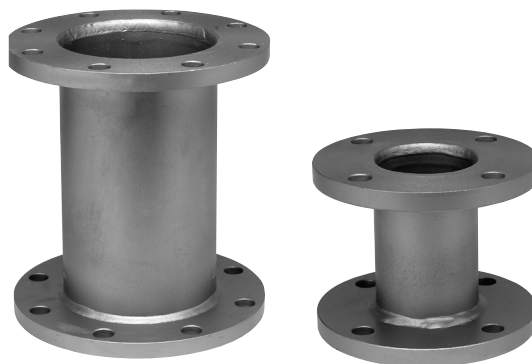
Models

SPL - Make Up Spools

Available in Lightweight 300 series Stainless Steel or Epoxy coated Carbon Steel. AWWA 150# class "D" Carbon Steel Flanges offered as standard. 150# class "D" Stainless Steel Flanges upon special request.

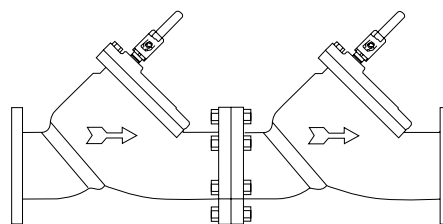
FLG - Make Up Flanges

AWWA 150# modified class "D" Zinc plated Carbon Steel Flanges with standard bolt pattern. 150# modified class "D" Zinc Plated Carbon Steel Flanges with standard pattern slotted. 150# modified class "D" Stainless Steel Flanges with standard bolt pattern.

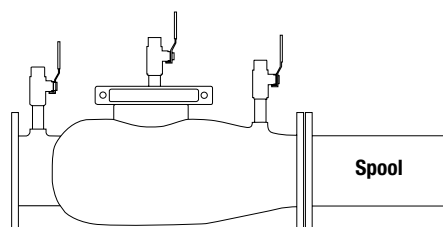


Spools

Spools



Ames 2000CIV



Ames 2000SS

Contact factory for specific applications.

NOTICE

The information contained herein is not intended to replace the full product installation and safety information available or the experience of a trained product installer. You are required to thoroughly read all installation instructions and product safety information before beginning the installation of this product.

*The wetted surface of this product contacted by consumable water contains less than 0.25% of lead by weight.

Ames Fire & Waterworks product specifications in U.S. customary units and metric are approximate and are provided for reference only. For precise measurements, please contact Ames Fire & Waterworks Technical Service. Ames Fire & Waterworks reserves the right to change or modify product design, construction, specifications, or materials without prior notice and without incurring any obligation to make such changes and modifications on Ames Fire & Waterworks products previously or subsequently sold.



How to order

Locate the manufacturer and model number under the valve size column in the matrix on these two pages. It is assumed that the valve you will be installing is a Ames 2000SS SilverBullet™ Series. On the first line across from the model number is the lay length of the valve less gates. On the lines listed below is the valve being replaced. On that line is the lay length of that valve. The column to the right is the length of the spool needed to “make up” the difference between the valve being replaced and the lay length of the “SilverBullet™ Series.” Below the spool length is the ordering code for that spool.

Retrofit Spool Pieces for Various Lengths • Ames Products vs Ames SilverBullet™ Series

AMES MODEL	2½**	ACTUAL SPOOL LENGTH NEEDED	3**	ACTUAL SPOOL LENGTH NEEDED	4**	ACTUAL SPOOL LENGTH NEEDED	6**	ACTUAL SPOOL LENGTH NEEDED	8**	ACTUAL SPOOL LENGTH NEEDED	10**	ACTUAL SPOOL LENGTH NEEDED
2000SS	22"	-	22"	-	22"	-	27½"	-	29½"	-	29½"	-
2000CIV	24"	1⅞"	24"	1⅞"	34"	11⅞"	42½"	14⅞"	52"	22⅜"	64"	34⅜"
3000SS	22"	-	22"	-	22"	-	27½"	-	29½"	-	29½"	-
3000CIV	-	-	24"	1⅞"	34"	11⅞"	41½"	13⅞"	52"	22⅜"	64"	34⅜"
4000SS	22"	-	22"	-	22"	-	27½"	-	29½"	-	29½"	-
4000CIV	26⅞"	4"	26⅞"	4"	37"	14⅞"	44½"	16⅞"	55¼"	25⅝"	67⅞"	37¾"
5000SS	22"	-	22"	-	22"	-	27½"	-	-	-	-	-
5000CIV	26⅞"	4"	26⅞"	4"	37"	14⅞"	44½"	16⅞"	55¼"	-	67⅞"	-

*Size and length of valve being replaced.

Spool Sizes and Lengths

VALVE SIZE	ORDERING CODE	LENGTH	SPOOL SIZE	MODEL
2½"	7017187	1⅞"	2½" x 1⅞"	SPL
	7017188	3⅞"	2½" x 3⅞"	SPL
	7017189	2⅝⅙"	2½" x 3⅝⅙"	SPL
	7017190	4"	2½" x 4"	SPL
	7017191	4⅝⅙"	2½" x 4⅝⅙"	SPL
3"	7017192	1⅞"	3" x 1⅞"	SPL
	7017193	2½"	3" x 2½"	SPL
	7017194	3½"	3" x 3½"	SPL
	7017195	3⅝⅙"	3" x 3⅝⅙"	SPL
	7017196	4"	3" x 4"	SPL
4"	7017197	5⅞"	4" x 5⅞"	SPL
	7017198	5⅞"	4" x 5⅞"	SPL
	7017199	6⅞"	4" x 6⅞"	SPL
	7017200	6⅝⅙"	4" x 6⅝⅙"	SPL
	7017201	7⅞"	4" x 7⅞"	SPL
	7017202	7⅝⅙"	4" x 7⅝⅙"	SPL
	7017203	8"	4" x 8"	SPL
	7017204	9⅞"	4" x 9⅞"	SPL
	7017205	10¼"	4" x 10¼"	SPL
	7017206	10⅞"	4" x 10⅞"	SPL
	7017207	11⅞"	4" x 11⅞"	SPL
	7017208	12"	4" x 12"	SPL
6"	7017209	14⅞"	4" x 14⅞"	SPL
	7017210	5⅞"	6" x 5⅞"	SPL
	7017211	8⅞"	6" x 8⅞"	SPL
	7017212	9⅝⅙"	6" x 9⅝⅙"	SPL
	7017213	10¼"	6" x 10¼"	SPL
	7017214	11"	6" x 11"	SPL
	7017215	12⅝⅙"	6" x 12⅝⅙"	SPL
	7017216	12½"	6" x 12½"	SPL
	7017217	13⅞"	6" x 13⅞"	SPL
	7017218	13⅞"	6" x 13⅞"	SPL
	7017219	14"	6" x 14"	SPL
	7017220	14⅞"	6" x 14⅞"	SPL
	7017221	14⅞"	6" x 14⅞"	SPL
	7017222	16⅞"	6" x 16⅞"	SPL
	7017223	17⅞"	6" x 17⅞"	SPL

VALVE SIZE	ORDERING CODE	LENGTH	SPOOL SIZE	MODEL
8"	7017224	12⅞"	8" x 12⅞"	SPL
	7017225	16⅞"	8" x 16⅞"	SPL
	7017226	16½"	8" x 16½"	SPL
	7017227	17⅞"	8" x 17⅞"	SPL
	7017228	18⅞"	8" x 18⅞"	SPL
	7017229	21⅝⅙"	8" x 21⅝⅙"	SPL
	7017230	21⅞"	8" x 21⅞"	SPL
	7017231	22⅞"	8" x 22⅞"	SPL
	7017232	22⅞"	8" x 22⅞"	SPL
	7017233	23⅞"	8" x 23⅞"	SPL
10"	7017234	25⅞"	8" x 25⅞"	SPL
	7017235	16⅞"	10" x 16⅞"	SPL
	7017236	16¾"	10" x 16¾"	SPL
	7017237	28⅞"	10" x 28⅞"	SPL
	7017238	28⅞"	10" x 28⅞"	SPL
	7017239	28½"	10" x 28½"	SPL
	7017240	29⅞"	10" x 29⅞"	SPL
	7017241	29⅝⅙"	10" x 29⅝⅙"	SPL
	7017242	32⅞"	10" x 32⅞"	SPL
	7017243	32⅝⅙"	10" x 32⅝⅙"	SPL
	7017244	34⅞"	10" x 34⅞"	SPL
	7017245	37¾"	10" x 37¾"	SPL

Size = Valve Size x Spool Length

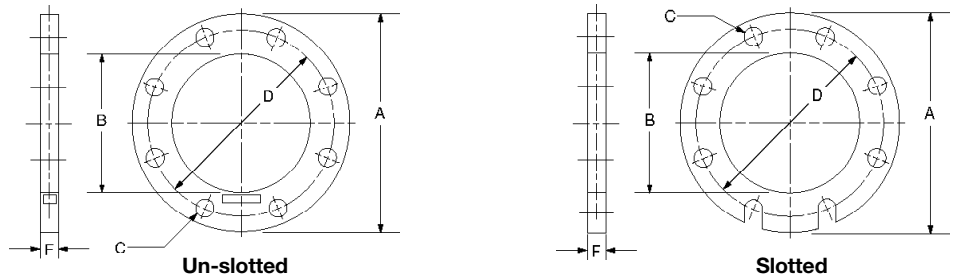
Please be advised that due to variations in manufacturing tolerances, the measurements listed can vary from what is installed. Please verify the measurements of the valve being replaced. Custom lay lengths available upon request.

"Make Up" Flanges

Available Thickness

1/4" & 1/2" Stainless Steel

1/2" & 1" Zinc Plated
Carbon Steel



AWWA C207 Modified Class D Spacer Flanges

SIZE	STD.	MODEL	ORDERING CODE	A FLG. OD +/-1/8	B FLG. ID +1/16 -0	C BOLT HOLE SIZE	D BOLT CIRCLE +/-1/16	E NO. HOLES	F THICKNESS +/-1/8	COMMENTS
2"	AWWA D	FLG SS-U	7017157	6"	2.44"	3/4"	4 3/4"	4	1/4"	UN-SLOTTED
2"	AWWA D	FLG SS-U	7017158	6"	2.44"	3/4"	4 3/4"	4	1/2"	UN-SLOTTED
2"	AWWA D	FLG SS-S	7017171	6"	2.44"	3/4"	4 3/4"	4	1/4"	SLOTTED
2"	AWWA D	FLG SS-S	7017172	6"	2.44"	3/4"	4 3/4"	4	1/2"	SLOTTED
2 1/2"	AWWA D	FLG SS-U	7017159	7"	2.94"	3/4"	5 1/2"	4	1/4"	UN-SLOTTED
2 1/2"	AWWA D	FLG SS-U	7017160	7"	2.94"	3/4"	5 1/2"	4	1/2"	UN-SLOTTED
2 1/2"	AWWA D	FLG SS-S	7017173	7"	2.94"	3/4"	5 1/2"	4	1/4"	SLOTTED
2 1/2"	AWWA D	FLG SS-S	7017174	7"	2.94"	3/4"	5 1/2"	4	1/2"	SLOTTED
3"	AWWA D	FLG Z-U	0107068	7 1/2"	3.57"	3/4"	6"	4	1/2"	UN-SLOTTED
3"	AWWA D	FLG Z-U	0107069	7 1/2"	3.57"	3/4"	6"	4	1"	UN-SLOTTED
3"	AWWA D	FLG Z-S	0107070	7 1/2"	3.57"	3/4"	6"	4	1/2"	SLOTTED
3"	AWWA D	FLG Z-S	0107071	7 1/2"	3.57"	3/4"	6"	4	1"	SLOTTED
3"	AWWA D	FLG SS-U	7017161	7 1/2"	3.57"	3/4"	6"	4	1/4"	UN-SLOTTED
3"	AWWA D	FLG SS-U	7017162	7 1/2"	3.57"	3/4"	6"	4	1/2"	UN-SLOTTED
3"	AWWA D	FLG SS-S	7017175	7 1/2"	3.57"	3/4"	6"	4	1/4"	SLOTTED
3"	AWWA D	FLG SS-S	7017176	7 1/2"	3.57"	3/4"	6"	4	1/2"	SLOTTED
4"	AWWA D	FLG Z-U	0107076	9"	4.57"	3/4"	7 1/2"	8	1/2"	UN-SLOTTED
4"	AWWA D	FLG Z-U	0107077	9"	4.57"	3/4"	7 1/2"	8	1"	UN-SLOTTED
4"	AWWA D	FLG Z-S	0107078	9"	4.57"	3/4"	7 1/2"	8	1/2"	SLOTTED
4"	AWWA D	FLG Z-S	0107079	9"	4.57"	3/4"	7 1/2"	8	1"	SLOTTED
4"	AWWA D	FLG SS-U	7017163	9"	4.57"	3/4"	7 1/2"	8	1/4"	UN-SLOTTED
4"	AWWA D	FLG SS-U	7017164	9"	4.57"	3/4"	7 1/2"	8	1/2"	UN-SLOTTED
4"	AWWA D	FLG SS-S	7017177	9"	4.57"	3/4"	7 1/2"	8	1/4"	SLOTTED
4"	AWWA D	FLG SS-S	7017178	9"	4.57"	3/4"	7 1/2"	8	1/2"	SLOTTED
6"	AWWA D	FLG Z-U	0107084	11"	6.72"	7/8"	9 1/2"	8	1/2"	UN-SLOTTED
6"	AWWA D	FLG Z-U	0107085	11"	6.72"	7/8"	9 1/2"	8	1"	UN-SLOTTED
6"	AWWA D	FLG Z-S	0107086	11"	6.72"	7/8"	9 1/2"	8	1/2"	SLOTTED
6"	AWWA D	FLG Z-S	0107087	11"	6.72"	7/8"	9 1/2"	8	1"	SLOTTED
6"	AWWA D	FLG SS-U	7017165	11"	6.72"	7/8"	9 1/2"	8	1/4"	UN-SLOTTED
6"	AWWA D	FLG SS-U	7017166	11"	6.72"	7/8"	9 1/2"	8	1/2"	UN-SLOTTED
6"	AWWA D	FLG SS-S	7017179	11"	6.72"	7/8"	9 1/2"	8	1/4"	SLOTTED
6"	AWWA D	FLG SS-S	7017180	11"	6.72"	7/8"	9 1/2"	8	1/2"	SLOTTED
8"	AWWA D	FLG Z-U	0107092	13 1/2"	8.72"	7/8"	11 3/4"	8	1/2"	UN-SLOTTED
8"	AWWA D	FLG Z-U	0107093	13 1/2"	8.72"	7/8"	11 3/4"	8	1"	UN-SLOTTED
8"	AWWA D	FLG Z-S	0107094	13 1/2"	8.72"	7/8"	11 3/4"	8	1/2"	SLOTTED
8"	AWWA D	FLG Z-S	0107095	13 1/2"	8.72"	7/8"	11 3/4"	8	1"	SLOTTED
8"	AWWA D	FLG SS-U	7017167	13 1/2"	8.72"	7/8"	11 3/4"	8	1/4"	UN-SLOTTED
8"	AWWA D	FLG SS-U	7017168	13 1/2"	8.72"	7/8"	11 3/4"	8	1/2"	UN-SLOTTED
8"	AWWA D	FLG SS-S	7017182	13 1/2"	8.72"	7/8"	11 3/4"	8	1/4"	SLOTTED
8"	AWWA D	FLG SS-S	7017182	13 1/2"	8.72"	7/8"	11 3/4"	8	1/2"	SLOTTED
10"	AWWA D	FLG SS-U	7017169	16"	10.81"	1"	14 1/4"	12	1/4"	UN-SLOTTED
10"	AWWA D	FLG SS-U	7017170	16"	10.81"	1"	14 1/4"	12	1/2"	UN-SLOTTED
10"	AWWA D	FLG SS-S	7017183	16"	10.81"	1"	14 1/4"	12	1/4"	SLOTTED
10"	AWWA D	FLG SS-S	7017184	16"	10.81"	1"	14 1/4"	12	1/2"	SLOTTED

Matrix: Z = Zinc S = Slotted SS = 304 Stainless Steel U = Un-slotted Size = Valve Size x Thickness

For additional information, visit our web site at: www.amesfirewater.com



A WATTS Brand

USA: Backflow Tel: (978) 689-6066 • Fax: (978) 975-8350 • AmesFireWater.com
USA: Control Valves Tel: (713) 943-0688 • Fax: (713) 944-9445 • AmesFireWater.com
Canada: Tel: (905) 332-4090 • Fax: (905) 332-7068 • AmesFireWater.ca
Latin America: Tel: (52) 81-1001-8600 • AmesFireWater.com