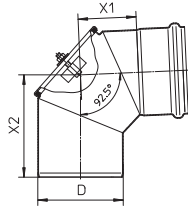


Tag: \_\_\_\_\_

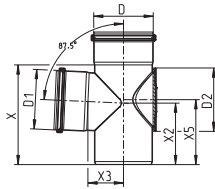
**SPECIFICATION:** BLÜCHER PIPE AISI Type 316L (standard) stainless steel pipe system, with Push-Fit socket connections with EPDM (standard) sealing ring. All BLÜCHER PIPE to be treated with pickling and passivation finish process.



### 90° Access Bend Dimensional Chart

Model No.	D	X1	X2
AB-3-316	3"(75)	2-1/16"(52)	4-1/16"(102)
AB-4-316	4"(110)	3"(75)	5-1/4"(132)
AB-6-316	6"(160)	4-3/16"(106)	8-1/16"(205)

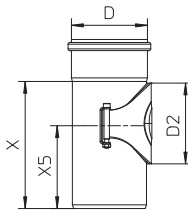
Global Ref. # 822.090.XXXS



### 90° Access Tee Dimensional Chart

Model No.	D	D1	D2	X	X2	X3	X5
AT-4x4-316	4"(110)	4"(110)	4-3/4"(120)	7-7/16"(189)	4-5/8"(117)	2-11/16"(67)	4-7/8"(123)
AT-6x6-316	6"(160)	6"(160)	4-3/4"(120)	10-11/16"(271)	6-15/16"(176)	3-7/16"(86)	8-3/16"(208)

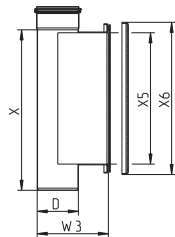
Global Ref. # 834.XXX.XXXS



### Straight Access Pipe Dimensional Chart

Model No.	D	D2	X	X5
AP-3-316	3"(75)	3-3/16"(80)	5-5/16"(134)	3-5/8"(92)
AP-4-316	4"(110)	4-3/4"(120)	7-3/8"(188)	4-7/8"(123)
AP-5-316	5"(125)	4-3/4"(120)	7-1/2"(190)	5-1/16"(128)
AP-6-316	6"(160)	4-3/4"(120)	10-11/16"(271)	8-3/16"(208)
AP-8-316	8"(200)	4-3/4"(120)	11-1/16"(281)	8-3/16"(208)

Global Ref. # 840.XXX.XXXS



### Large Access Pipe Dimensional Chart

Model No.	D	W3	X	X5	X6
LAP-4-316	4"(110)	7-1/2"(190)	16-15/16"(430)	13-3/4"(350)	16"(406)
LAP-6-316	6"(160)	10-7/16"(265)	19-1/2"(495)	15-3/4"(400)	17-15/16"(456)
LAP-8-316	8"(200)	13"(330)	24"(610)	19-11/16"(500)	21-7/8"(556)
LAP-10-316	10"(250)	15-15/16"(405)	28-15/16"(735)	23-5/8"(600)	25-13/16"(656)

Global Ref. # 840.000.XXXS

Job Name \_\_\_\_\_ Contractor \_\_\_\_\_

Job Location \_\_\_\_\_ Approval \_\_\_\_\_

Engineer \_\_\_\_\_ Contractor's P.O. No. \_\_\_\_\_

Approval \_\_\_\_\_ Representative \_\_\_\_\_