

For Commercial Applications

Job Name _____	Contractor _____
Job Location _____	Approval _____
Engineer _____	Contractor's P.O. No. _____
Approval _____	Representative _____
Tag _____	

BFD-230-R-SO

Adjustable Floor Drain with 12" Round Top, Side Outlet

Specification

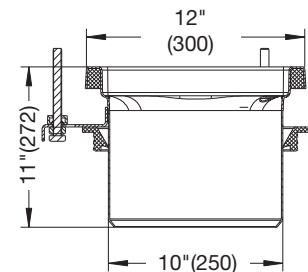
BLÜCHER BFD-230-R-SO AISI Type 304 stainless steel adjustable floor drain with 12"(300) round top, 1/8"(3) grating (standard), and side outlet.

Dimensions

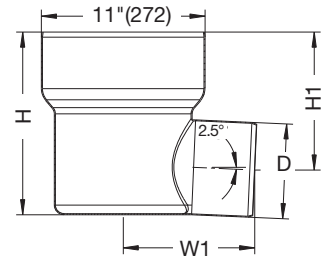
Model No.	Upper Lower	Pipe Size D	H	H1	W1	Total Height Adj.
BFD-234-R-SO	774.503.000 763.003.110	4 1/4"(110)	6 15/32"(164)	12 5/8"(321)	8"(201)	14 9/16"(370)- 16 15/16"(430)
BFD-236-R-SO	774.503.000 763.003.160	6"(160)	7 1/2"(192)	13-11/16"(348)	13"(335)	11 5/8"(296)- 14"(356)





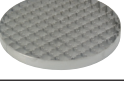
BFD-230-R-SO



Upper Part



Lower Part

Optional Gratings			
Image	Suffix	Description	
	-None	1/8" (Standard)	<input type="checkbox"/>
	-HG	Hygienic-Pro	<input type="checkbox"/>
	-LG	Ladder	<input type="checkbox"/>
	-MG	Mesh	<input type="checkbox"/>
	-SG	Slot	<input type="checkbox"/>

Options (Select One Or More)		
Suffix	Description	
-150	1/2 Grate (Standard Grating)	<input type="checkbox"/>
-175	3/4 Grate (Standard Grating)	<input type="checkbox"/>
-316	Type 316 Stainless Steel	<input type="checkbox"/>
-B	Sediment Basket	<input type="checkbox"/>
-P	Stainless Steel P-Trap	<input type="checkbox"/>
-R	8" Round Top	<input type="checkbox"/>
-SB	Sand Bucket	<input type="checkbox"/>
-TPT	Trap Primer Tapping	<input type="checkbox"/>
-VP	Grate Secured w/Vandal Proof Screws	<input type="checkbox"/>

Please see ES-B-Commercial/Industrial Round Gratings for more information.

NOTICE

The information contained herein is not intended to replace the full product installation and safety information available or the experience of a trained product installer. You are required to thoroughly read all installation instructions and product safety information before beginning the installation of this product.

Approvals



Compliance with NSF/ANSI/3-A 14159-1-Hygiene Requirements for the Design of Meat and Poultry Processing Equipment



Product is certified to the uniform plumbing code ASME A112.6.3



A WATTS Brand