

For Commercial And Industrial Applications

Job Name _____
 Job Location _____
 Engineer _____
 Approval _____
 Tag _____

Contractor _____
 Approval _____
 Contractor's P.O. No. _____
 Representative _____

BHD-100

Hub Drain

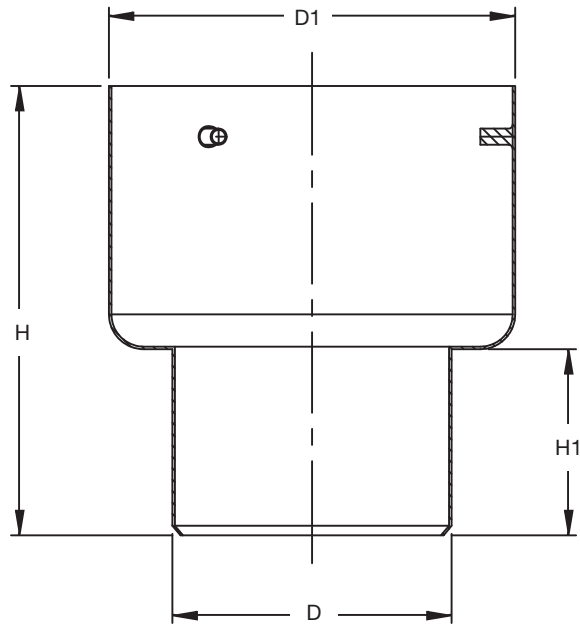
Specification:

BLÜCHER BHD-100 AISI Type 304 stainless steel hub drain with bottom outlet.

Dimensional Chart

MODEL NO.	PIPE SIZE D	D1	H	H1
BHD-102	2"(50)	6-5/16"(160)	10-3/4"(272)	6-5/8"(169)
BHD-103	3"(75)	6-5/16"(160)	10-3/4"(272)	6-5/8"(169)
BHD-104	4"(110)	6-5/16"(160)	7"(177)	2-7/8"(73)
BHD-106	6"(160)	10-3/16"(259)	14-11/16"(372)	10"(254)
BHD-108	8"(200)	10-3/16"(259)	8-11/16"(220)	4"(101)

OPTIONS		
SUFFIX	DESCRIPTION	
-316	Type 316 Stainless Steel	<input type="checkbox"/>
-B	Sediment Basket	<input type="checkbox"/>



NOTICE

The information contained herein is not intended to replace the full product installation and safety information available or the experience of a trained product installer. You are required to thoroughly read all installation instructions and product safety information before beginning the installation of this product.

Approvals



Compliance with NSF/ANSI/3-A 14159-1-Hygiene Requirements for the Design of Meat and Poultry Processing Equipment



* Product is certified to the uniform plumbing code ASME A112.6.3



A WATTS Brand