

For Commercial Applications

Job Name _____ Contractor _____

Job Location _____ Approval _____

Engineer _____ Contractor's P.O. No. _____

Approval _____ Representative _____

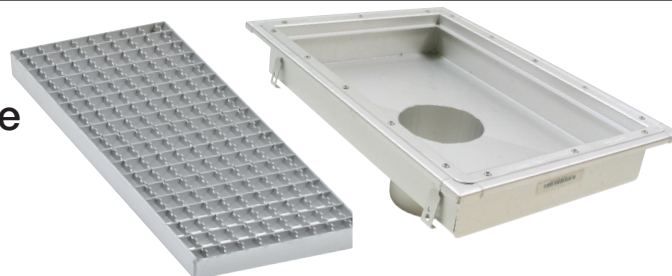
Tag _____

BKC-500

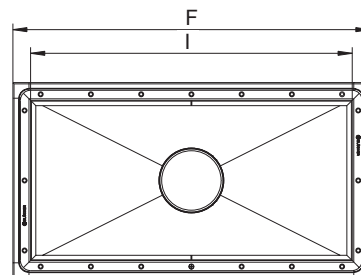
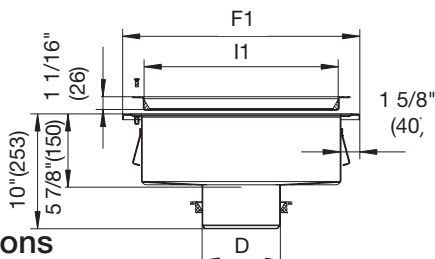
Kitchen Channel with Surface Membrane Clamp (For Rubberized Sheet Flooring)

Specification

BLÜCHER BKC-500 AISI Type 304 stainless steel (specify length x width x depth) kitchen channel with surface membrane clamp for vinyl flooring, 1" (25) thick mesh grating, and bottom outlet.



BKC-500



Dimensions

Model No.	Global Part #	Pipe Size D	F	F1	I	I1
BKC-504-16x16	662FH004-15	4"(102)	17 3/16"(437)	17 3/16"(437)	15 5/8"(397)	15 5/8"(397)
BKC-506-16x16	662FK004-15	6"(160)	17 3/16"(437)	17 3/16"(437)	15 5/8"(397)	15 5/8"(397)
BKC-504-16x32	662FH008-15	4"(102)	33"(837)	17 3/16"(437)	31 3/8"(797)	15 5/8"(397)
BKC-506-16x32	662FK008-15	6"(160)	33"(837)	17 3/16"(437)	31 3/8"(797)	15 5/8"(397)
BKC-504-20x20	662GH005-15	4"(102)	21 1/8"(537)	21 1/8"(537)	19 9/16"(497)	19 9/16"(497)
BKC-506-20x20	662GK005-15	6"(160)	21 1/8"(537)	21 1/8"(537)	19 9/16"(497)	19 9/16"(497)
BKC-504-20x40	662GH010-15	4"(102)	40 13/16"(1037)	21 1/8"(537)	39 1/4"(997)	19 9/16"(497)
BKC-506-20x40	662GK010-15	6"(160)	40 13/16"(1037)	21 1/8"(537)	39 1/4"(997)	19 9/16"(497)

Options (Select One Or More)		
-316	Type 316 Stainless Steel	<input type="checkbox"/>
-B	Sediment Basket	<input type="checkbox"/>
-E	Edge Infill	<input type="checkbox"/>
-FC	Outlet with Flushing Flange & Clamp	<input type="checkbox"/>
-LD	Grate Locking Device	<input type="checkbox"/>
-P	Stainless Steel P-Trap	<input type="checkbox"/>
-SB	Sand Bucket (6"(160) Outlet Only)	<input type="checkbox"/>

Optional Gratings		
Suffix	Description	<input type="checkbox"/>
-LG	Heavy Duty Ladder Grating	<input type="checkbox"/>

Approvals



Compliance with NSF/ANSI/3-A 14159-1-Hygiene Requirements for the Design of Meat and Poultry Processing Equipment



NOTICE

The information contained herein is not intended to replace the full product installation and safety information available or the experience of a trained product installer. You are required to thoroughly read all installation instructions and product safety information before beginning the installation of this product.

USA: T: (800) 338-2581 • F: (828) 248-3929 • BLUCHERpipe.com
Canada: T: (905) 332-4090 • F: (905) 332-7068 • BLUCHERpipe.com
Latin America: T: (52) 81-1001-8600 • BLUCHERpipe.com



A WATTS Brand