

Job Name _____

Contractor _____

Job Location _____

Approval _____

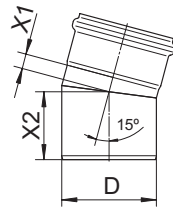
Engineer _____

Contractor's P.O. No. _____

Approval _____

Representative _____

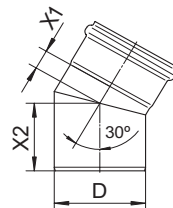
SPECIFICATION: BLÜCHER PIPE AISI Type 316L (standard) stainless steel pipe system, with Push-Fit socket connections with EPDM (standard) sealing ring. All BLÜCHER PIPE to be treated with pickling and passivation finish process.



15° Bend Dimensional Chart

Model No.	D	X1	X2
B1.5-15-316	1.5"(40)	5/8"(15)	2-1/16"(53)
B2-15-316	2"(50)	5/16"(7)	2-3/16"(54)
B3-15-316	3"(75)	7/16"(11)	2-5/8"(66)
B4-15-316	4"(110)	11/16"(18)	3-1/8"(78)
B5-15-316	5"(125)	9/16"(14)	3-5/16"(84)
B6-15-316	6"(160)	15/16"(23)	3-15/16"(99)
B8-15-316	8"(200)	15/16"(23)	4-7/8"(123)
B10-15-316	10"(250)	1-3/16"(30)	5-3/8"(136)

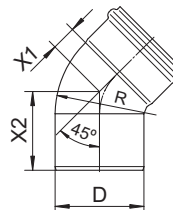
Global Ref. # 820.015.XXXS



30° Bend Dimensional Chart

Model No.	D	X1	X2
B1.5-30-316	1.5"(40)	11/16"(18)	2-3/16"(55)
B2-30-316	2"(50)	7/16"(11)	2-1/4"(57)
B3-30-316	3"(75)	11/16"(18)	2-13/16"(71)
B4-30-316	4"(110)	15/16"(23)	3-3/8"(85)
B5-30-316	5"(125)	15/16"(23)	3-7/8"(98)
B6-30-316	6"(160)	1-3/8"(34)	4-3/8"(110)
B8-30-316	8"(200)	1-1/2"(37)	5-7/16"(137)
B10-30-316	10"(250)	1-15/16"(48)	6-1/16"(153)

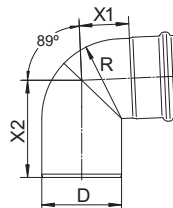
Global Ref. # 820.030.XXXS



45° 1/8 Bend Dimensional Chart

Model No.	D	X1	X2	R
B1.5-45-316	1.5"(40)	13/16"(21)	2-1/4"(58)	1.5"(40)
B2-45-316	2"(50)	7/8"(21)	2-3/8"(60)	2"(50)
B3-45-316	3"(75)	1-1/8"(28)	3"(76)	3"(75)
B4-45-316	4"(110)	1-1/2"(38)	3-11/16"(93)	4"(110)
B5-45-316	5"(125)	2-1/8"(53)	4-3/8"(111)	5"(125)
B6-45-316	6"(160)	1-15/16"(49)	5-3/16"(131)	6"(150)
B8-45-316	8"(200)	5-3/8"(136)	9-3/16"(234)	8"(200)
B10-45-316	10"(250)	6-15/16"(176)	11"(280)	10"(250)

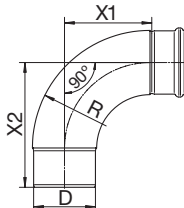
Global Ref. # 820.045.XXXS



90° 1/4 Bend Dimensional Chart

Model No.	D	X1	X2	R
B1.5-90-316	1.5"(40)	1-1/4"(32)	3-1/8"(79)	1.5"(40)
B2-90-316	2"(50)	1-7/16"(35)	3-7/16"(86)	2"(50)
B3-90-316	3"(75)	1-15/16"(48)	4-1/4"(107)	3"(75)
B4-90-316	4"(110)	2-11/16"(68)	5-5/16"(134)	4"(110)
B5-90-316	5"(125)	3-1/2"(88)	6-5/16"(161)	5"(125)
B6-90-316	6"(160)	3-15/16"(99)	7-1/8"(181)	6"(150)
B8-90-316	8"(200)	11-3/4"(299)	15-5/8"(397)	8"(200)
B10-90-316	10"(250)	15"(350)	19-1/16"(484)	10"(250)

Global Ref. # 820.000.XXXAS



90° Degree Sweep 1/4 Bend Dimensional Chart

Model No.	D	X1	X2	R
B2-90S-316	2"(50)	4-15/16"(125)	3"(77)	3-13/16"(97)
B3-90S-316	3"(75)	6-1/8"(155)	4-1/8"(105)	5-1/4"(133)
B4-90S-316	4"(110)	8-3/4"(222)	6-5/16"(160)	8-1/4"(209)
B6-90S-316	6"(160)	12-11/16"(322)	9-3/4"(247)	12-5/16"(313)

Global Ref. # 825.090.XXXS

NOTICE

The information contained herein is not intended to replace the full product installation and safety information available or the experience of a trained product installer. You are required to thoroughly read all installation instructions and product safety information before beginning the installation of this product.