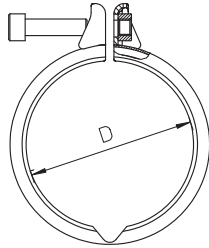


Tag: \_\_\_\_\_

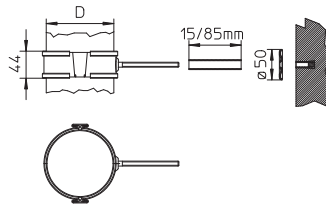
**SPECIFICATION:** BLÜCHER PIPE AISI Type 316L (standard) stainless steel pipe system, with Push-Fit socket connections with EPDM (standard) sealing ring. All BLÜCHER PIPE to be treated with pickling and passivation finish process.



### Joint Clamp Dimensional Chart

Model No.	D
JC-1.5	1.5"(40)
JC-2	2"(50)
JC-3	3"(75)
JC-4	4"(110)
JC-6	6"(160)
JC-8	8"(200)
JC-10	10"(250)

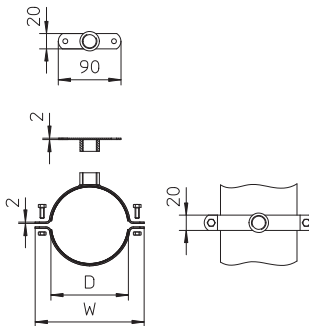
Global Ref. # 847.XXX.XXX



### Pipe Hanger Dimensional Chart

Model No.	D
PH-2	2"(50)
PH-3	3"(75)
PH-4	4"(110)
PH-6	6"(160)

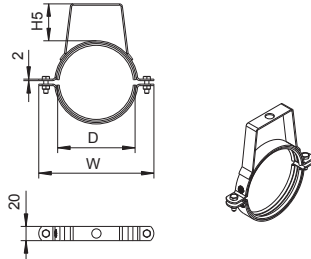
Global Ref. # 860.040.XXX



### 2-Piece Pipe Hanger Dimension Chart

Model No.	D	Thread Size
PH2-1.5-3/8	1.5"(40)	3/8"
PH2-1.5-1/2	1.5"(40)	1/2" BSP
PH2-2-3/8	2"(50)	3/8"
PH2-2-1/2	2"(50)	1/2" BSP
PH2-3-3/8	3"(75)	3/8"
PH2-3-1/2	3"(75)	1/2" BSP
PH2-4-3/8	4"(110)	3/8"
PH2-4-1/2	4"(110)	1/2" BSP
PH2-6-3/8	6"(160)	3/8"
PH2-6-1/2	6"(160)	1/2" BSP

Global Ref. # 895.012.XXX



### Adjustable Pipe Hanger Dimensional Chart

Model No.	D
PHA-1.5	1.5"(40)
PHA-2	2"(50)
PHA-3	3"(75)
PHA-4	4"(110)
PHA-6	6"(160)

Global Ref. # 895.200.XXXS



### Sway Brace

Model No.
SB-1

Global Ref. # 847.000.000

Job Name \_\_\_\_\_ Contractor \_\_\_\_\_

Job Location \_\_\_\_\_ Approval \_\_\_\_\_

Engineer \_\_\_\_\_ Contractor's P.O. No. \_\_\_\_\_

Approval \_\_\_\_\_ Representative \_\_\_\_\_