

For Commercial/Industrial Applications

Job Name _____

Contractor _____

Job Location _____

Approval _____

Engineer _____

Contractor's P.O. No. _____

Approval _____

Representative _____

Tag _____

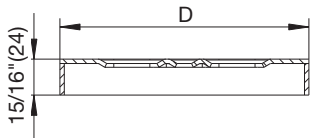
Commercial/Industrial

Round Gratings

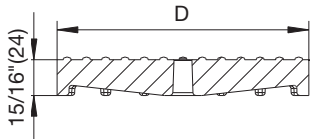
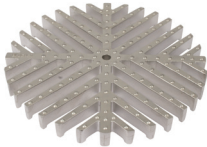
Specification

BLÜCHER Commercial/Industrial Round Drain Gratings AISI Type 304 stainless steel include Mesh Grating (Standard), Slot Grating (-SG), Hygienic-Pro Grating (-HG), Extra Heavy Duty Ladder Grating (-XLG) Ladder Grating (-LG) and Shower Grating (-SH).

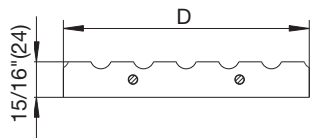
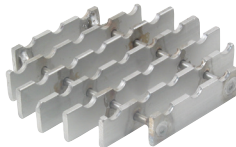
1/8" Standard Grating



Hygienic-Pro Grating (-HG)



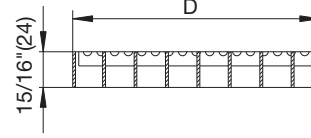
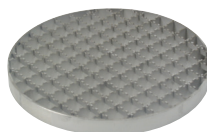
Ladder Grating (-LG)



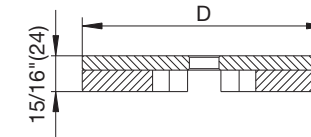
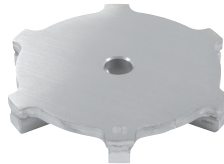
Please see ES-B-Commercial/Industrial Square Gratings for more information.

Suffix	Options Description
-316	Type 316 Stainless Steel <input type="checkbox"/>

Mesh Grating (-MG)



Slot Grating (-SG)



Product Data

Model No.	Global Part No.	Load Rating ASME A112.6.3-2016	D	Free Area Sq. In.
1/8" Standard Grating				
BG-8R	790.173.000.03	MD	6 13/16"(173)	4.58
BG-12R	790.273.000.03	MD	10 3/4"(273)	16.31
Mesh Grating (-MG)				
BMG-8R	790.173.000.22	HD	6 13/16"(173)	28.88
BMG-12R	790.273.000.22	HD	10 3/4"(273)	72.78
Hygienic-Pro Grating (-HG)				
BHG-8R	790.173.000.60	HD	6 13/16"	23.39
BHG-12R	790.273.000.60	HD	10 3/4"	56.85
Slot Grating (-SG)				
BSG-8R	790.173.000.10	HD	6 13/16"(173)	7.885
BSG-12R	790.273.000.10	HD	10 3/4"(273)	13.85
Ladder Grating (-LG)				
BLG-8R	790.173.000.25	XHD	6 13/16"(173)	26.87
BLG-12R	790.273.000.25	XHD	10 3/4"(273)	68.41

* ASME A112.6.3 data interpolated based on EN 1253 testing results.

NOTICE

Load Ratings

Load ratings are based upon maximum anticipated traffic, in accordance with American Standards ASME A112.6.3-2016. See specification pages for specific load rating data.

Approvals



Compliance with NSF/ANSI/3-A 14159-1-Hygiene Requirements for the Design of Meat and Poultry Processing Equipment



Product is certified to the uniform plumbing code ASME A112.6.3

NOTICE

The information contained herein is not intended to replace the full product installation and safety information available or the experience of a trained product installer. You are required to thoroughly read all installation instructions and product safety information before beginning the installation of this product.



A WATTS Brand