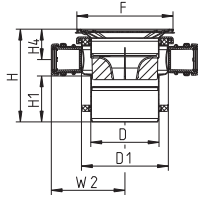
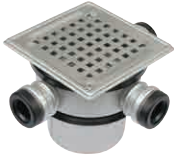


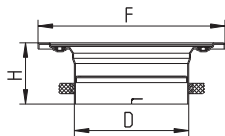
Tag: _____

Upper Part for Tiled or Wood Floors with Side Inlets



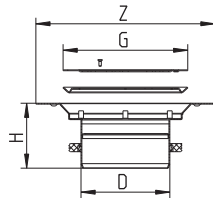
Model No. 316L / Global Part #	Pipe Size D	D1	F	H	H1	H4	W2
471.300.110S	4" (110)	5-1/2" (140)	6-1/8"x6-1/8" (155x155)	5-7/8"-6-15/16" (150-160)	2-7/8" (74)	1-15/16"-2-5/16" (49-59)	4-11/16" (119)

Upper Part for Resin Floors



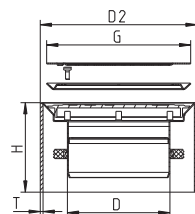
Model No. 316L / Global Part #	Pipe Size D	F	H
472.320.110S	4" (110)	7-1/16" (180)	2-5/16" (59)

Upper Part with Surface Membrane Clamp for Vinyl Floors



Model No. 316L / Global Part #	Pipe Size D	Z	G	H
473.301.110S	4" (110)	8-3/4" (222)	6-1/8" (155)	3-3/16" (81)

Upper Part with Welding Sleeve for Vinyl Floors



Model No. 316L / Global Part #	Pipe Size D	G	H	D2	T
472.320.110S	4" (110)	6-1/8" (155)	3-3/4" (96)	6-5/8" (168)	1/8" (3)

Job Name _____ Contractor _____

Job Location _____ Approval _____

Engineer _____ Contractor's P.O. No. _____

Approval _____ Representative _____