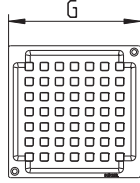


## Replacement Gratings — Square, Round, Round w/Ring for Water Trap

Square



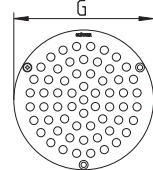
610.155.421S



Round



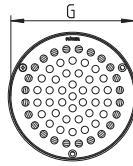
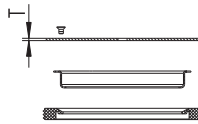
620.135.021S



Round w/Ring for Water Trap



474.300.110S

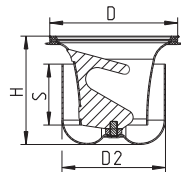


Model No. 316L / Global Part #	Pipe Size G	T	Screws
610.155.421S	5-1/2"(140)	1/16"(2)	2
620.135.021S	5-5/16"(135)	1/16"(2)	3
474.300.110S	5-5/16"(135)	1/16"(2)	3

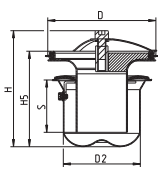
## Water Traps — Two-Part Trap, Removable Multi Trap



502.050.110MS



503.000.110CR



Model No. 316L / Global Part #	Pipe Size D	H	H5	S	D2	Max Flow GPM (l/s)
502.050.110MS	4-1/4" (108)	3-1/2" (89)	2" (50)	3-3/8" (85)		27 (1.7)
503.000.110CR	4-1/4" (108)	4-7/16" (113)	5-11/16" (93)	2" (51)	2-15/16" (75)	19 (1.2)

Job Name \_\_\_\_\_ Contractor \_\_\_\_\_  
 Job Location \_\_\_\_\_ Approval \_\_\_\_\_  
 Engineer \_\_\_\_\_ Contractor's P.O. No. \_\_\_\_\_  
 Approval \_\_\_\_\_ Representative \_\_\_\_\_