



# Series 850U

## Double Check Valve Assemblies with Union End Ball Valves

Size: 1/2" - 2" (15 - 50mm)\*\*

The FEBCO Series 850U Double Check Valve Assemblies are designed for non-health hazard applications. Series 850U are designed to protect drinking water supplies from dangerous cross-connections in accordance with national plumbing codes and water authority requirements for non-potable service applications such as irrigation, fireline, or industrial processing. End Connections – NPT ANSI/ASME B1.20.1.

### Pressure – Temperature

Maximum Working Pressure: 175psi (12.1 bar)  
 Hydrostatic Test Press: 350psi (24.1 bar)  
 Temperature Range: 32°F to 140°F (0°C to 60°C)

### Materials

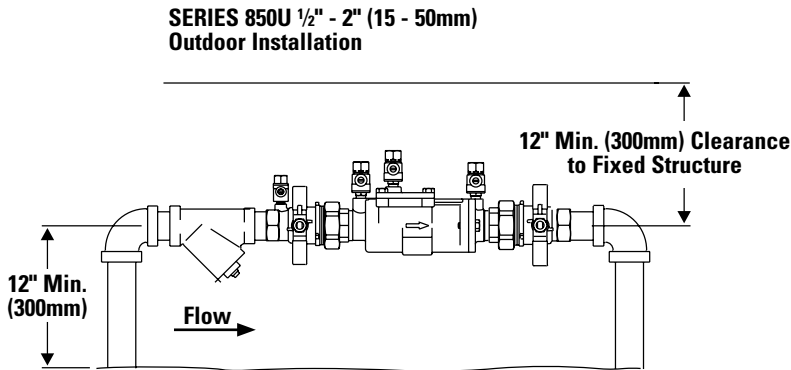
Valve Body: Bronze  
 Elastomers: Silicone  
 Springs: Stainless Steel

### Approvals – Standards

- ANSI/AWWA Conformance (C510-92)
- Approved by the Foundation for Cross-Connection Control and Hydraulic Research at the University of Southern California.



### Typical Installation

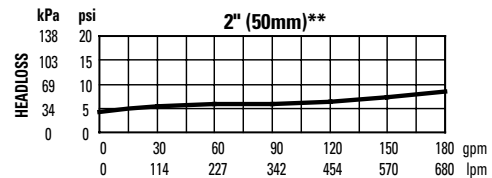
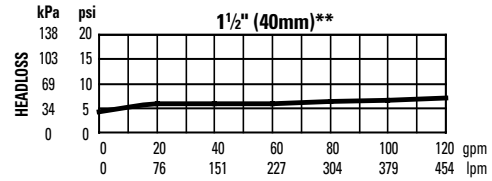
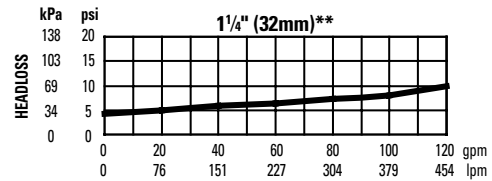
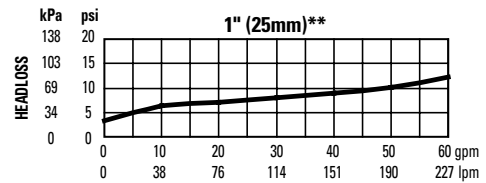
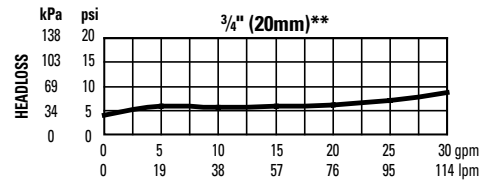
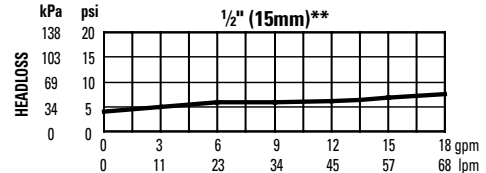


\*\*Metric Dimensions are nominal pipe diameter. This product is produced with NPT threaded end connections.



Series 850U

### Capacity



Job Name \_\_\_\_\_

Job Location \_\_\_\_\_

Engineer \_\_\_\_\_

Approval \_\_\_\_\_

Contractor \_\_\_\_\_

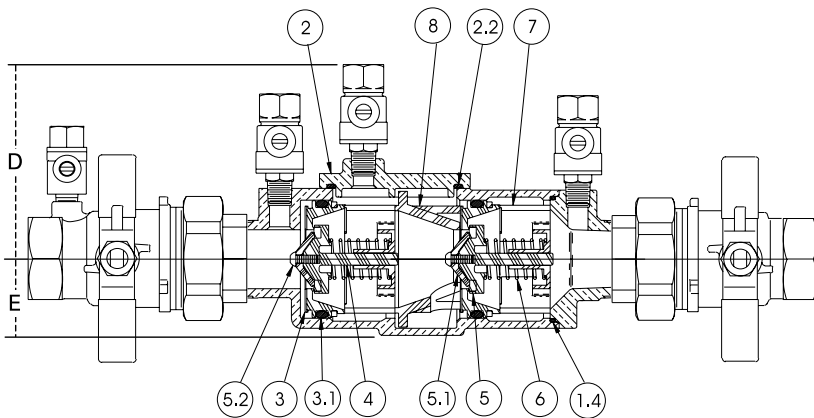
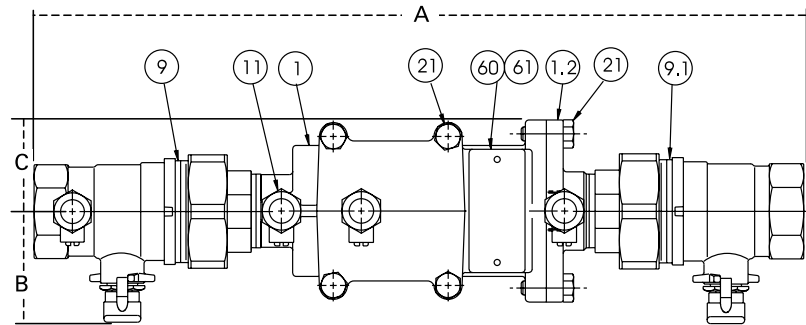
Approval \_\_\_\_\_

Contractor's P.O. No. \_\_\_\_\_

Representative \_\_\_\_\_

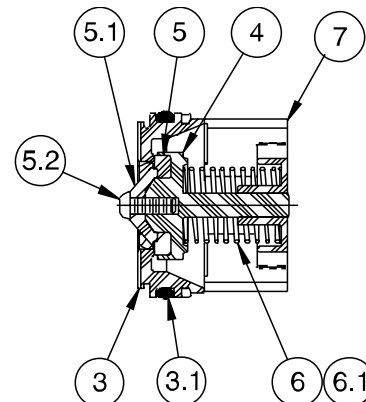
FEBCO product specifications in U.S. customary units and metric are approximate and are provided for reference only. For precise measurements, please contact FEBCO. FEBCO reserves the right to change or modify product design, construction, specifications, or materials without prior notice and without incurring any obligation to make such changes and modifications on FEBCO products previously or subsequently sold.

Series 850U / Size: 1/2" - 2" (15 - 50mm)\*\*



ITEM	DESCRIPTION	MATERIALS
1	Body	Bronze
1.2	Tailpiece	Bronze
1.4	O-Ring	Silicone
2	Cover	Bronze
2.2	O-Ring	Silicone
3	Seat	Noryl®
3.1	O-Ring	Silicone
4	Poppet	Noryl®
5	Seat Disc	Silicone
5.1	Disc Retainer	Noryl®
5.2	Rnd HD Screw	Stainless Steel
6	Spring	Stainless Steel
7	Guide	Noryl®
8	Retainer Spacer	Noryl®
9	Union End	Bronze
9.1	Union End Ball Valve (w/tap)	Bronze
11	Test Cock	Bronze
21	Hex HD Capscrew	Stainless Steel
60	Identification Plate	Brass
61	Drive Screw Stick	Stainless Steel

Check Assembly



Dimensions – Weights

Size: 1/2" - 2" (15 - 50mm)\*\*

SIZE (DM)		DIMENSIONS								WEIGHT			
	A	B	C	D	E								
in.	mm	in.	mm	in.	mm	in.	mm	in.	mm	in.	mm	lbs.	kgs.
1/2	15	11	299	1 1/2	38	1 1/2	38	3 3/8	79	1 1/4	32	4.2	1.9
3/4	20	12 1/2	318	1 1/2	38	1 1/2	38	3 3/8	79	1 1/4	32	5.1	2.3
1	25	14 5/8	372	1 7/8	48	1 5/8	41	3 3/8	86	1 1/2	38	7.7	3.5
1 1/4	32	18 1/4	464	3	76	2 1/2	64	4 1/4	108	2 1/4	57	14.9	6.8
1 1/2	40	18 7/8	479	3	76	2 1/2	64	4 1/4	108	2 1/4	57	18.0	8.2
2	50	20 1/2	521	3 1/2	89	2 1/2	64	4 1/4	108	2 1/4	57	24.1	10.9

Dimensions are nominal. Allowances must be made for normal manufacturing tolerances.

**WARNING**

It is illegal to use this product in any plumbing system providing water for human consumption, such as drinking or dishwashing, in the United States. Before installing standard material product, consult your local water authority, building and plumbing codes.

**NOTICE**

Inquire with governing authorities for local installation requirements

\*\*Metric Dimensions are nominal pipe diameter. This product is produced with NPT threaded end connections.



A Watts Water Technologies Company



USA: Tel: (800) 767-1234 • Fax: (800) 788-4491 • FEBCOonline.com  
 Canada: Tel: (905) 332-4090 • Fax: (905) 332-7068 • FEBCOonline.ca  
 Latin America: Tel: (52) 81-1001-8600 • FEBCOonline.com