

For Residential or Commercial Radiant Heating and Snow Melt Applications

Job Name _____

Contractor _____

Job Location _____

Approval _____

Engineer _____

Contractor's P.O. No. _____

Approval _____

Representative _____

Insulated Barrier Heating PEX Pipe

Flexible Insulated Heating PEX Pipe for hot or chilled water

Sizes: 1" (25.4 mm), 32 mm (1-1/4")

Insulated Barrier Heating PEX pipe is a multi-layered insulated piping system consisting of cross-linked SDR-9 (1" (25.4 mm) only) or SDR-11 Heating PEX barrier pipe, multiple PE foam insulation layers, and an outer dual wall corrugated casing. It is engineered for exterior hydronic heating and cooling applications. It is not intended for interior or potable applications. Insulated Barrier Heating PEX pipe is manufactured with an integral DIN 4726 standard oxygen barrier which limits oxygen diffusion through the pipe wall to less than 0.10 g/m³/day at 104.0°F (40.0°C) water temperature.

Specifications

System shall be installed using Insulated Barrier Heating PEX pipe. All connections shall be made using Watts Insulated Barrier Heating PEX Compression fittings in accordance with all corresponding installation guidelines. Insulation thermal conductivity 0.0211 Btu/hr sq ft °F (0.0365 W/m °K). Insulation water absorption after 28 days less than 1.04% volume.

Operating Temperature & Pressure

Max. Temperature	Max. Pressure
200.0°F (93.3°C)	80 psi (5.5 bar)
180.0°F (82.2°C)	100 psi (6.9 bar)
73.4°F (22.7°C)	160 psi (11.0 bar)

Installation Parameters

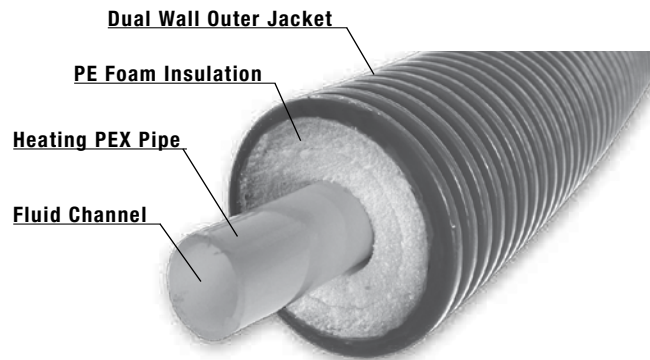
Insulated Barrier Heating PEX pipe must be installed in accordance with all Watts installation procedures, including information provided in the Insulated Barrier Heating PEX pipe installation manual and guidelines.

Features

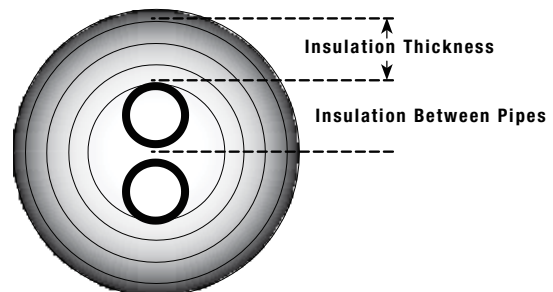
Insulated Barrier Heating PEX pipe is available in a dual internal Heating PEX pipe configuration. The inner insulation layer is constructed of extruded PE foam, a flexible, water resistant material. The internal Heating PEX pipes are encased in a unique dual layer corrugated outer casing. This dual layer provides enhanced flexibility while preventing water penetration. In the event the outer layer is damaged, the inner layer still protects the insulation from water penetration - preventing a potential increase in heat loss.

Applications

Insulated Barrier Heating PEX pipe can be used for hydronic heating, hydronic snow melting, district heating, commercial and process piping, cooling towers and chilled water systems, geothermal, agricultural piping, biomass heat sources, wood-fired boilers, solar, and more.



Insulated Barrier Heating PEX pipe



Internal Pex Tubing Standards and Listings



1 inch Heating PEX tubing is certified to ASTM F876, SDR-9 dimensions.



All other Heating PEX tubing manufactured in accordance to DIN standards for Testing and Materials (DIN 16892 and 16893).

CAUTION

This Engineering Sheet is not intended to provide full installation instructions and safety information. In order to avoid property damage or injury, please refer to the complete installation manual and product safety information provided with the product.



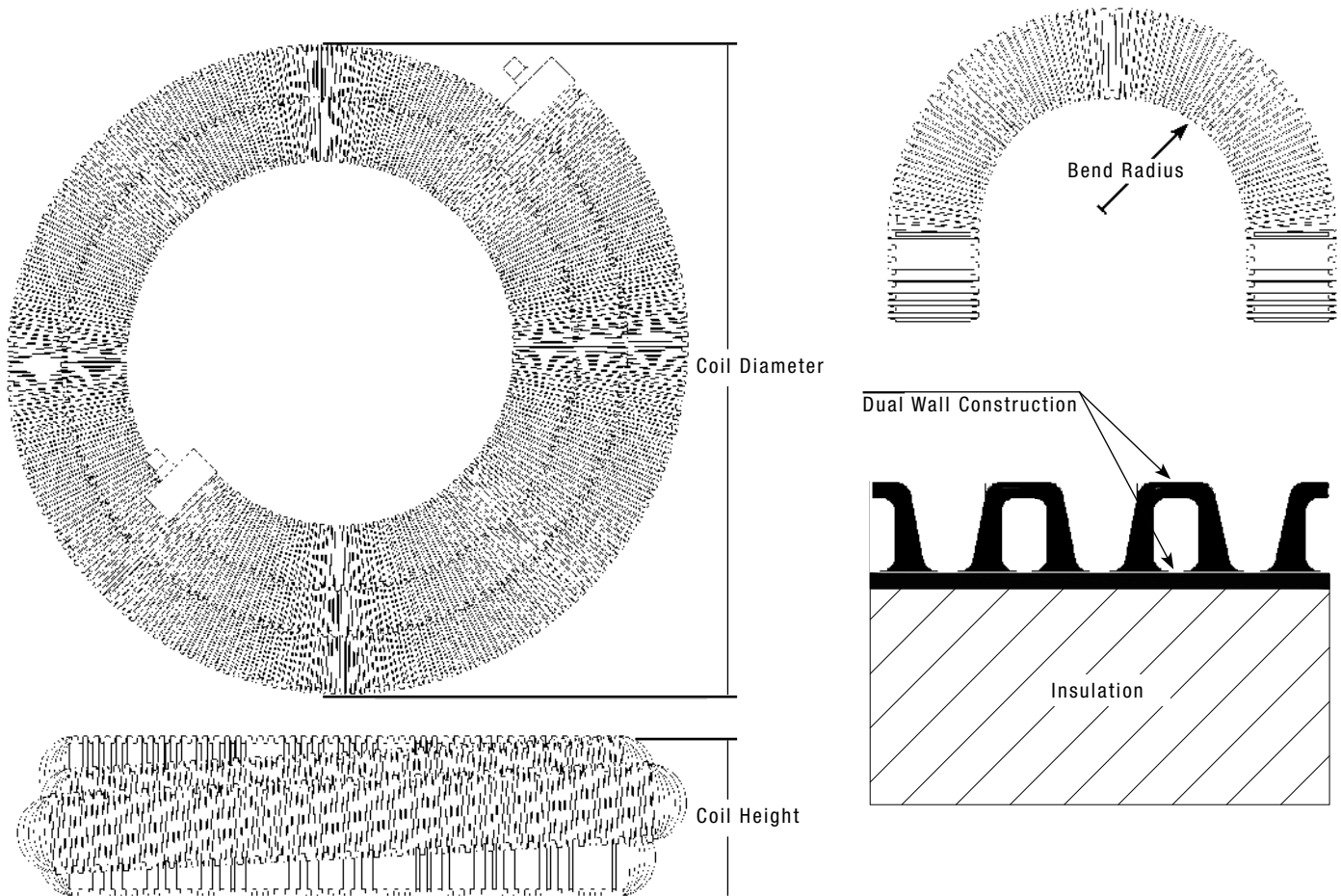
WATTS®

Watts product specifications in U.S. customary units and metric are approximate and are provided for reference only. For precise measurements, please contact Watts Technical Service. Watts reserves the right to change or modify product design, construction, specifications, or materials without prior notice and without incurring any obligation to make such changes and modifications on Watts products previously or subsequently sold.

Specifications (conforms to DIN 16892, SDR 11)

✓	Order #	Description	PEX ID	PEX OD	Jacket OD	Bend Radius	Coil Length	Coil Diameter	Coil Height	Coil Weight	Fluid Cap./100m (328ft)	Insulation Thickness	Casing R-Value
	0955324	Dual 1" (25.4 mm) x125 mm*	0.863" (21.9 mm)	1.125" (28.6 mm)	4.9" (125.0 mm)	11.8" (300.0 mm)	50 ft (15.2 m)	82.7" (2100.0 m)	27.6" (700.0 mm)	368 kg (162 lbs)	19.9 gal (75.5 L)	1.1" (28.0 mm)	4.0
	0955325						100 ft (30.4 m)						
	0955326						150 ft (45.7 m)						
	0955327						200 ft (60.9 m)						
	0955328						100 m (328 ft)						
	0955329	Dual 32 mm x 125 mm	26.2 mm (1.0")	32.0 mm (1.3")	125.0 mm (4.9")	300.0 mm (11.8")	50 ft (15.2 m)	2100.0 m (82.7")	700.0 mm (27.6")	182 kg (402 lbs)	107.5 L (28.4 gal)	22.3 mm (0.9")	3.2
	0955330						100 ft (30.4 m)						
	0955331						150 ft (45.7 m)						
	0955332						200 ft (60.9 m)						
	0955333						100 m (328 ft)						

* 1" Dual is certified to ASTM F876, SDR-9 dimensions.



WATTS®

ES-Insulated-Barrier-Heating-PEX-Pipe 1145

USA: No. Andover, MA • Tel. (855) 699-2887 • Fax: (978) 794-1848 • radiant.watts.com
 Canada: Burlington, ONT. • Tel. (905) 332-4090 • Fax: (905) 332-7068 • radiant.watts.com

© 2011 Watts