

Models: 1011, 1012

Suction Diffusers

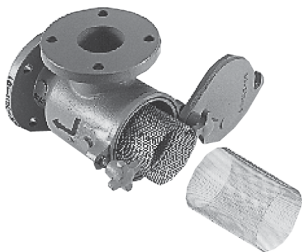
Sizes: 2" x 1¼" - 18" x 14"

Pressure / Temperature – Non-Shock		
Models	Sizes	Rating CWP
1011	2"-12"	200psi @ 150°F (14 bar @ 66°C) 165psi @ 300°F EPDM
1011	14" and Up	150psi @ 150°F (10.3 bar @ 66°C) 110psi @ 300°F EPDM
1012		300psi @ 100°F (21 bar @ 38°C)

Max. temp. can be limited by gasket material. Consult factory.

1011
1012

Class 125
Class 300



Models 1011, 1012

Mueller Steam Specialty Suction Diffusers provide economical and compact pump protection by straining foreign particles and providing proper flow conditions to the pump.

Typical Service

- Mounts directly to the suction side of a pump, in either horizontal or vertical position.

Features

- Compact design enables this one unit to act as an elbow, strainer, and entry pipe to the suction side of the pump. This reduces installation time, overall cost, and reduces joint leak paths.
- Equal size flanges or reduced outlet flange sizes available. Reduced outlet design eliminates the need for a reducing base elbow.
- Quick opening knobs allow for quick maintenance. Bolted cover is available on 1012 model.
- O-ring seal eliminates the need to clean the sealing area and install a new flat gasket in competitive models.
- Straightening vanes on the Suction Diffuser's outlet side reduces turbulence into the pump. These minimize stress and erosion within the pump, and eliminate the need for a length of straight pipe to diminish turbulence.
- Robust 5 to 1 Open Area Ratio and blow off feature extend the time between servicing and allows for ease of draining and flushing
- A separate removable fine mesh screen liner is installed in each Diffuser for start-up. After the start-up period, simply remove and discard, leaving the primary screen for operation.
- Special pads fit the I.D. of standard pipe, eliminating the need for pipe saddles and relieving stress on hanger systems.
- Gauge tapping in available as specified with the order.

Screen

MODEL	SIZES	STANDARD (WATER)	
		MATERIAL	OPENING
1011, 1012	Up to 6"	304SS	.156 perf
1011, 1012	8" and Up	304SS	.125 perf
Sleeve		304SS	20 mesh

Materials

	1011	1012
Body and Cover	Cast Iron ASTM A126-B	Ductile Iron ASTM A536
Knobs	(2"x1¼"-8" x 8") – Ductile Iron ASTM A536	(2"x1¼"-8" x 8") – Ductile Iron ASTM A536
Nuts	(10"x10" and larger) – Carbon Steel ASTM A194-2H	(10"x10" and larger) – Carbon Steel ASTM A194-2H
Sleeve	20 mesh Stainless Steel	20 mesh Stainless Steel
O-Ring	EPDM	EPDM

Special metals and alloys on request.

Job Name _____

Contractor _____

Job Location _____

Approval _____

Engineer _____

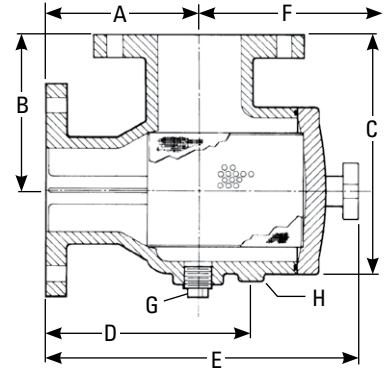
Contractor's P.O. No. _____

Approval _____

Representative _____

Dimensions and Weights

SIZE		DIMENSIONS								WEIGHT	
Inlet x Outlet		A	B	C	D	E	F	G	H		
in.	mm	in.	mm	in.	mm	in.	mm	in.	mm	in.	mm
							Screen Removal	NPT	Pipe Support I.D.	lbs.	kgs.
1011											
2x1¼	50x32	4½ 114	4½ 114	6 ¹ / ₁₆ 170	6 ¹ / ₈ 156	10 ³ / ₁₆ 259	8 ¹³ / ₁₆ 224	¾ 20	.824 21	19	9
2x1½	50x40	4½ 114	4½ 114	6 ¹ / ₁₆ 170	6 ¹ / ₈ 156	10 ³ / ₁₆ 259	8 ¹³ / ₁₆ 224	¾ 20	.824 21	21	10
2x2	50x50	4½ 114	4½ 114	6 ¹ / ₁₆ 170	6 ¹ / ₈ 156	10 ³ / ₁₆ 259	8 ¹³ / ₁₆ 224	¾ 20	.824 21	23	10
2½x2	65x50	5 127	5 127	7 ¹ / ₂ 191	6 ³ / ₁₆ 167	10 ⁷ / ₁₆ 276	9 ¹ / ₈ 232	¾ 20	1.049 27	32	15
2½x2½	65x65	5 127	5 127	7 ¹ / ₂ 191	6 ³ / ₁₆ 167	10 ⁷ / ₁₆ 276	9 ¹ / ₈ 232	¾ 20	1.049 27	34	15
3x2	80x50	5½ 140	5½ 140	8 ¹ / ₁₆ 214	7 ¹ / ₁₆ 179	11 ⁹ / ₁₆ 294	9 ⁵ / ₈ 244	¾ 20	1.049 27	45	20
3x2½	80x65	5½ 140	5½ 140	8 ¹ / ₁₆ 214	7 ¹ / ₁₆ 179	11 ⁹ / ₁₆ 294	9 ⁵ / ₈ 244	¾ 20	1.049 27	46	21
3x3	80x80	5½ 140	5½ 140	8 ¹ / ₁₆ 214	7 ¹ / ₁₆ 179	11 ⁹ / ₁₆ 294	9 ⁵ / ₈ 244	¾ 20	1.049 27	47	21
4x3	100x80	6½ 165	6½ 165	10 ¹ / ₄ 260	8 ³ / ₄ 222	13 ¹ / ₈ 333	11½ 292	1 25	1.380 35	71	44
4x4	100x100	6½ 165	6½ 165	10 ¹ / ₄ 260	8 ³ / ₄ 222	13 ¹ / ₈ 333	11½ 292	1 25	1.380 35	73	33
5x4	125x100	7½ 191	7½ 191	11 ¹⁵ / ₁₆ 278	10 254	15¾ 400	14 ⁷ / ₈ 378	1 25	1.380 35	96	34
5x5	125x125	7½ 191	7½ 191	11 ¹⁵ / ₁₆ 278	10 254	15¾ 400	14 ⁷ / ₈ 378	1 25	1.380 35	101	46
6x4	150x100	8 203	8 203	13¾ 346	10½ 267	16 ¹ / ₈ 429	16 ¹ / ₁₆ 421	1 25	1.380 35	132	60
6x5	150x125	8 203	8 203	13¾ 346	10½ 267	16 ¹ / ₈ 429	16 ¹ / ₁₆ 421	1 25	1.380 35	136	62
6x6	150x150	8 203	8 203	13¾ 346	10½ 267	16 ¹ / ₈ 429	16 ¹ / ₁₆ 421	1 25	1.380 35	139	63
8x6	200x150	9 229	9 229	14¾ 372	11½ 292	17 ⁷ / ₈ 454	16 ⁷ / ₈ 429	1 25	1.380 35	166	75
8x8	200x200	9 229	9 229	15 ¹³ / ₁₆ 402	11¾ 298	20¾ 527	22 ⁷ / ₈ 581	1¼ 32	1.380 35	249	113
10x8	250x200	9 229	11 279	17 ¹³ / ₁₆ 453	11¾ 298	20¾ 527	22 ⁷ / ₈ 581	1¼ 32	1.380 35	276	125
10x10	250x250	11 279	11 279	19¾ 492	14 357	26¾ 670	30¼ 768	1¼ 32	2.067 53	422	191
12x8	300x200	9 229	12 305	18¾ 467	11¾ 298	20¾ 527	22 ⁷ / ₈ 581	1¼ 32	1.380 35	412	187
12x10	300x250	11 279	12 305	20¾ 518	14 357	26¾ 670	33 838	1¼ 32	2.067 53	491	223
12x12	300x300	12 305	12 305	21 ¹⁵ / ₁₆ 541	15¼ 387	26¾ 665	28¾ 730	1¼ 32	2.067 53	573	260
14x10	350x250	11 279	14 356	22½ 571	14 357	26¾ 670	33 838	1¼ 32	2.067 53	507	230
14x12	350x300	12 305	14 356	23¾ 594	15¼ 387	26¾ 665	31 787	1¼ 32	2.067 53	601	273
14x14	350x350	14 356	14 356	25 635	17½ 445	28 711	33¾ 841	2 51	2.067 53	706	320
16x12	400x300	12 305	15 381	24¾ 619	15¼ 387	26¾ 665	28¾ 730	1¼ 32	2.067 53	660	299
16x14	400x350	14 356	15 381	26 660	17½ 445	27 ⁷ / ₈ 708	31 787	2 51	2.067 53	750	340
16x16	400x400	14 ¹ / ₁₆ 357	14 ¹ / ₁₆ 357	24 ¹⁵ / ₁₆ 633	17 ¹ / ₁₆ 446	27 ¹³ / ₁₆ 706	33 ³ / ₈ 841	2 51	2.067 53	820	372
18x12	450x300	12 305	16½ 419	25¾ 657	15¼ 387	25¾ 644	28¾ 730	1¼ 32	2.067 53	—	—
1012											
2x2	50x50	4¾ 121	4¾ 121	6 ¹⁵ / ₁₆ 176	6¾ 162	10 ⁷ / ₁₆ 265	8 ¹³ / ₁₆ 351	¾ 20	.824 21	30	14
2½x2	65x50	5¼ 133	5 ¹ / ₁₆ 135	7 ¹³ / ₁₆ 198	6 ¹³ / ₁₆ 173	11 ¹ / ₈ 283	9 ¹ / ₈ 232	¾ 20	1.380 35	35	16
2½x2½	65x65	5 ⁵ / ₁₆ 135	5 ⁷ / ₈ 149	7 ¹³ / ₁₆ 198	6 ⁷ / ₈ 175	11 ⁹ / ₁₆ 284	9 ¹ / ₈ 232	¾ 20	1.380 35	39	18
3x2	80x50	5¾ 146	5 ⁷ / ₈ 149	8 ¹³ / ₁₆ 224	7¾ 194	11 ⁹ / ₁₆ 300	9 ⁵ / ₈ 244	¾ 20	1.380 35	57	26
3x2½	80x65	5 ¹³ / ₁₆ 148	5 ⁷ / ₈ 149	8 ¹³ / ₁₆ 224	7 ¹¹ / ₁₆ 195	11 ⁷ / ₈ 302	9 ⁵ / ₈ 244	¾ 20	1.380 35	59	27
3x3	80x80	5¾ 149	5 ⁷ / ₈ 149	8 ¹³ / ₁₆ 224	7¾ 197	11 ¹⁵ / ₁₆ 303	9 ⁵ / ₈ 244	¾ 20	1.380 35	63	29
4x3	100x80	6 ¹ / ₁₆ 170	6 ¹³ / ₁₆ 173	10 ⁷ / ₁₆ 265	8 ¹⁵ / ₁₆ 227	13 ¹⁵ / ₁₆ 354	11½ 292	1 25	1.380 35	79	36
4x4	100x100	6 ¹³ / ₁₆ 173	6 ¹³ / ₁₆ 173	10 ⁷ / ₁₆ 265	9 ¹⁵ / ₁₆ 252	13 ¹ / ₁₆ 341	11½ 292	1 25	1.380 35	86	39
6x4	150x100	8 ³ / ₁₆ 211	8½ 216	13 ¹³ / ₁₆ 351	10 ¹³ / ₁₆ 275	17 ³ / ₁₆ 437	16 ¹ / ₁₆ 421	1 25	1.380 35	161	73
6x5	150x125	8 ¹ / ₁₆ 214	8½ 216	13 ¹³ / ₁₆ 351	10 ⁹ / ₁₆ 278	17 ¹ / ₁₆ 440	16 ¹ / ₁₆ 421	1 25	1.380 35	165	75
6x6	150x150	8 ¹ / ₁₆ 214	8½ 216	13 ¹³ / ₁₆ 351	10 ⁹ / ₁₆ 278	17 ¹ / ₁₆ 440	16 ¹ / ₁₆ 421	1 25	1.380 35	168	76
8x6	200x150	9 ¹ / ₁₆ 240	10 254	15 ⁵ / ₁₆ 389	11 ¹⁵ / ₁₆ 303	18 ⁵ / ₁₆ 465	16 ⁷ / ₈ 429	1 25	1.380 35	216	98
8x8	200x200	9½ 241	10 254	16¾ 425	12 ⁵ / ₁₆ 313	21 ¹ / ₁₆ 541	22 ⁷ / ₈ 581	1¼ 32	1.380 35	317	144
10x8	250x200	9½ 241	11¾ 298	18 ¹ / ₁₆ 468	12 ⁵ / ₁₆ 313	21 ¹ / ₁₆ 541	22 ⁷ / ₈ 581	1¼ 32	1.380 35	358	163
10x10	250x250	11¾ 298	11¾ 298	20 508	14¾ 375	27 ¹ / ₈ 689	30¼ 768	1¼ 32	1.380 35	473	215
12x10	300x250	11¾ 298	12¾ 327	21 ¹ / ₈ 537	14¾ 375	27 ¹ / ₈ 689	33 838	1¼ 32	1.380 35	524	237



Models 1011, 1012

Mueller Steam Specialty product specifications in U.S. customary units and metric are approximate and are provided for reference only. For precise measurements, please contact Mueller Steam Specialty Technical Service. Mueller Steam Specialty reserves the right to change or modify product design, construction, specifications, or materials without prior notice and without incurring any obligation to make such changes and modifications on Mueller Steam Specialty products previously or subsequently sold.



A Watts Water Technologies Company

USA: Tel: (800) 334-6259 • Fax: (800) 421-6772 • MuellerSteam.com

Latin America: Tel: (52) 81-1001-8600 • Fax: (52) 81-8000-7091 • MuellerSteam.com