

**Models: 15A/AF, 30A/AF, 60A/AF, 90A/AF, 150A/AF, 250A/AF**

**Quick Acting Line Blinds**  
**Sizes: 1" - 48" (25 - 1200mm)**

Pressure/Temperature - Non-Shock		
Model	Material	Rating
15A/AF	Carbon Steel	285psi @ 100°F
30A/AF	Carbon Steel	740psi @ 100°F
60A/AF	Carbon Steel	1480psi @ 100°F
90A/AF	Carbon Steel	2220psi @ 100°F
150A/AF	Carbon Steel	3705psi @ 100°F
250A/AF	Carbon Steel	6170psi @ 100°F

<b>15A/AF</b>	<b>Class</b>	<b>150</b>
<b>30A/AF</b>	<b>Class</b>	<b>300</b>
<b>60A/AF</b>	<b>Class</b>	<b>600</b>
<b>90A/AF</b>	<b>Class</b>	<b>900</b>
<b>150A/AF</b>	<b>Class</b>	<b>1500</b>
<b>250A/AF</b>	<b>Class</b>	<b>2500</b>

**Type A: Butt weld**  
**Type AF: Flanged**



Model 15AF

**Typical Service**

- Mueller Steam Specialty Quick Acting Line Blinds are designed for applications that require positive visual indication of line closure and opening.

**Features**

- Position of the spectacle plate positively and safely indicates open or closed
- O-ring seals are used for positive, dead-tight shutoff.
  - O-ring is situated in a dovetail groove on both faces.
- Stainless steel guide pins in the face of the body flange ensure accurate alignment of the spectacle plate.
- Quick and easy installation and changeover for cost savings.
  - Mueller 6" Line blind changeover can be accomplished by one operator in approximately five minutes without special tools.
  - A typical 6" Figure Eight blind typically takes two operators 1½ hours to change over
- Available in flanged or weld end connections.

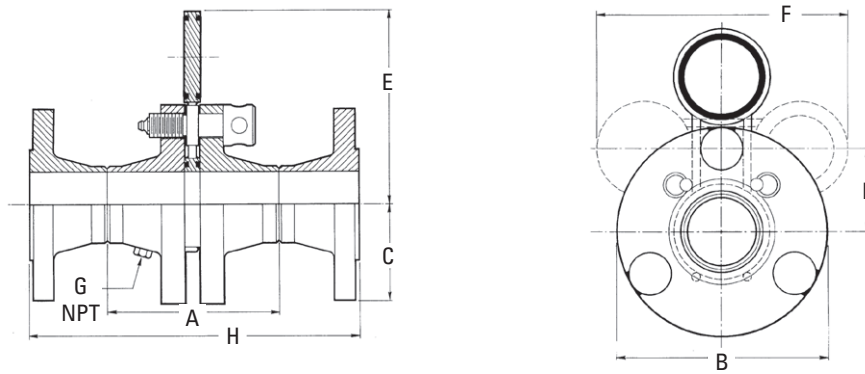
**Materials**

- Carbon Steel bodies standard, with zinc plated carbon steel trim
- Stainless steel and other alloys available on request

Job Name \_\_\_\_\_  
 Job Location \_\_\_\_\_  
 Engineer \_\_\_\_\_  
 Approval \_\_\_\_\_

Contractor \_\_\_\_\_  
 Approval \_\_\_\_\_  
 Contractor's P.O. No. \_\_\_\_\_  
 Representative \_\_\_\_\_

## Dimensions and Weights



Model 15A/AF

SIZE		DIMENSIONS										WEIGHT									
		A		B		C		D		E		F		G (NPT)		H		15A		15AF	
in.	mm	in.	mm	in.	mm	in.	mm	in.	mm	in.	mm	in.	mm	in.	mm	in.	mm	lbs.	kgs.	lbs.	kgs.
1	25	5 <sup>1</sup> / <sub>8</sub>	130	4 <sup>7</sup> / <sub>8</sub>	124	2 <sup>1</sup> / <sub>8</sub>	54	1 <sup>15</sup> / <sub>16</sub>	49	4 <sup>13</sup> / <sub>16</sub>	122	5 <sup>3</sup> / <sub>4</sub>	146	NA	—	9 <sup>1</sup> / <sub>16</sub>	246	11	5.0	17	7.7
1 <sup>1</sup> / <sub>2</sub>	38	5 <sup>5</sup> / <sub>8</sub>	143	6 <sup>1</sup> / <sub>8</sub>	156	2 <sup>1</sup> / <sub>2</sub>	64	2 <sup>5</sup> / <sub>8</sub>	67	6	152	7 <sup>1</sup> / <sub>4</sub>	184	NA	—	10 <sup>1</sup> / <sub>16</sub>	271	17	7.7	25	11.4
2	50	5 <sup>3</sup> / <sub>4</sub>	146	6 <sup>1</sup> / <sub>2</sub>	165	3	76	5 <sup>15</sup> / <sub>32</sub>	63	6 <sup>3</sup> / <sub>8</sub>	162	7 <sup>13</sup> / <sub>16</sub>	198	1/4	8	10 <sup>15</sup> / <sub>16</sub>	271	22	10	34	15.5
2 <sup>1</sup> / <sub>2</sub>	65	6 <sup>1</sup> / <sub>4</sub>	159	7 <sup>1</sup> / <sub>2</sub>	191	3 <sup>1</sup> / <sub>2</sub>	89	3 <sup>3</sup> / <sub>32</sub>	79	7 <sup>7</sup> / <sub>16</sub>	189	9	229	1/4	8	11 <sup>15</sup> / <sub>16</sub>	303	29	13	45	20.5
3	80	6 <sup>1</sup> / <sub>2</sub>	165	8 <sup>1</sup> / <sub>4</sub>	210	3 <sup>3</sup> / <sub>4</sub>	95	3 <sup>7</sup> / <sub>16</sub>	87	8 <sup>5</sup> / <sub>8</sub>	219	10 <sup>5</sup> / <sub>8</sub>	270	1/4	8	12 <sup>3</sup> / <sub>16</sub>	310	35	16	55	25
4	100	7	178	10	254	4 <sup>1</sup> / <sub>2</sub>	115	4 <sup>3</sup> / <sub>16</sub>	106	10 <sup>1</sup> / <sub>2</sub>	267	13	330	1/4	8	13 <sup>3</sup> / <sub>16</sub>	310	62	28	92	42
5	125	8	203	11	280	5	127	4 <sup>5</sup> / <sub>8</sub>	118	12	305	15	381	1/4	8	14 <sup>3</sup> / <sub>16</sub>	360	77	35	115	52
6	150	8 <sup>1</sup> / <sub>8</sub>	206	12 <sup>1</sup> / <sub>2</sub>	318	5 <sup>1</sup> / <sub>2</sub>	140	5 <sup>3</sup> / <sub>8</sub>	137	13 <sup>3</sup> / <sub>8</sub>	352	17 <sup>1</sup> / <sub>2</sub>	445	1/2	15	15 <sup>5</sup> / <sub>16</sub>	389	101	46	159	72
8	200	9 <sup>1</sup> / <sub>8</sub>	232	15	381	6 <sup>3</sup> / <sub>4</sub>	171	6 <sup>5</sup> / <sub>8</sub>	168	16 <sup>15</sup> / <sub>16</sub>	430	21 <sup>3</sup> / <sub>8</sub>	543	1/2	15	17 <sup>5</sup> / <sub>16</sub>	440	159	72	237	108
10	250	9 <sup>5</sup> / <sub>8</sub>	245	17 <sup>1</sup> / <sub>2</sub>	445	8	203	7 <sup>5</sup> / <sub>8</sub>	194	20 <sup>3</sup> / <sub>8</sub>	518	26	660	1/2	15	17 <sup>13</sup> / <sub>16</sub>	452	220	100	324	147
12	300	10 <sup>3</sup> / <sub>4</sub>	273	20 <sup>1</sup> / <sub>2</sub>	521	9 <sup>1</sup> / <sub>2</sub>	241	9 <sup>1</sup> / <sub>8</sub>	232	25 <sup>1</sup> / <sub>4</sub>	641	32 <sup>1</sup> / <sub>4</sub>	819	1/2	15	19 <sup>15</sup> / <sub>16</sub>	506	339	154	559	254
14	350	11 <sup>3</sup> / <sub>4</sub>	298	23	584	10 <sup>1</sup> / <sub>2</sub>	267	10 <sup>1</sup> / <sub>4</sub>	260	28 <sup>11</sup> / <sub>32</sub>	720	36 <sup>1</sup> / <sub>4</sub>	920	1	25	21 <sup>15</sup> / <sub>16</sub>	557	437	198	657	298
16	400	12 <sup>1</sup> / <sub>8</sub>	308	25 <sup>1</sup> / <sub>2</sub>	648	11 <sup>3</sup> / <sub>4</sub>	299	11 <sup>1</sup> / <sub>4</sub>	286	30 <sup>3</sup> / <sub>32</sub>	765	38 <sup>1</sup> / <sub>2</sub>	978	1	25	22 <sup>5</sup> / <sub>16</sub>	567	597	271	877	398
18	450	13 <sup>3</sup> / <sub>4</sub>	337	28	711	12 <sup>1</sup> / <sub>2</sub>	318	12 <sup>3</sup> / <sub>4</sub>	324	34 <sup>1</sup> / <sub>16</sub>	865	43 <sup>5</sup> / <sub>8</sub>	1108	1	25	24 <sup>1</sup> / <sub>16</sub>	621	787	357	1087	493
20	500	13 <sup>5</sup> / <sub>8</sub>	346	30 <sup>1</sup> / <sub>2</sub>	775	13 <sup>3</sup> / <sub>4</sub>	350	13 <sup>3</sup> / <sub>4</sub>	350	37 <sup>1</sup> / <sub>16</sub>	948	47 <sup>7</sup> / <sub>8</sub>	1216	1	25	25 <sup>3</sup> / <sub>16</sub>	640	997	452	1357	615
24	600	14 <sup>3</sup> / <sub>8</sub>	365	36	915	16	407	15 <sup>1</sup> / <sub>2</sub>	394	44 <sup>3</sup> / <sub>16</sub>	1122	56 <sup>3</sup> / <sub>4</sub>	1441	1	25	26 <sup>9</sup> / <sub>16</sub>	675	1471	667	1990	903

Approximate dimensions for models 15A and 15AF (Class 150 only)

Larger sizes available. Consult factory for dimensions for models 30A/AF, 60A/AF, 90A/AF, 150A/AF, 250A/AF.

Mueller Steam Specialty product specifications in U.S. customary units and metric are approximate and are provided for reference only. For precise measurements, please contact Mueller Steam Specialty Technical Service. Mueller Steam Specialty reserves the right to change or modify product design, construction, specifications, or materials without prior notice and without incurring any obligation to make such changes and modifications on Mueller Steam Specialty products previously or subsequently sold.

