

Models: 165, 166-DI

Cast Iron and Ductile Iron Flanged End Basket Strainers Sizes: 1 1/4" - 24" (32- 600mm)

Pressure/Temperature - Non-Shock		
Model	Material	Rating
165 1 1/4" - 12"	Cast	200psi @ -20°F to 150°F
	Iron	13.79 bar @ 65.56°C
		140psi @ 406°F 9.65 bar @ 207.78°C
165 14" - 24"	Cast	150psi @ -20°F to 150°F
	Iron	10.34 bar @ 65.56°C
		100psi @ 353°F
		6.89 bar @ 178.33°C
166-DI 1 1/4" - 16"	Ductile Iron	640psi @ -20°F to 100°F
		10.34 bar @ 65.56°C
		450psi @ 650°F
		31.03 bar @ 343.33°C

Max. temp. can be limited by gasket material. Consult factory.

165 Cast Iron **Class 125**
166-DI Ductile Iron **Class 300**



Models 165, 166-DI

*165-DI available upon request. Consult Factory.

Strainers provide economical protection for costly pumps, meters, valves, and other similar mechanical equipment by straining foreign matter from the connected piping system. Installation of a strainer before mechanical equipment can ensure trouble free service and avoid costly shutdowns for repair or replacement of equipment that can be damaged by foreign matter. The size of the perforation or mesh in the basket screen will determine the smallest particles captured. See Strainer Information section in the Mueller Steam Specialty Engineering binder for detailed information including sizes and materials available.

Typical Service

- These strainers can be specified for cooling water, sea water, hot water systems and more.
- They are especially suited for medium or coarse straining. For finer straining, see Model 125.

Features

- The angular cutaway design of the baskets allows a straight through flow, resulting in extremely low pressure drop.
- Tapped and plugged NPT drain on the strainer bottom enables easy self-cleaning on open bottom baskets. Simply open the valve or plug on the outlet to flush accumulated particles.
- Bodies can be tapped for pressure gauges, or per customer requirement. Consult factory.

Construction

- Cover is a flanged bolted design for easy basket removal.

Capacity

- Minimum 6 to 1 ratio.

Galvanizing

- Available on all sizes, consult factory

Baskets

MODEL	SIZES	STANDARD (WATER)		STEAM RECOMMENDATION	
		MATERIAL	OPENING	MATERIAL	OPENING
165, 166-DI	1 1/4" - 4"	304SS	.062 perf	304SS	.045 perf
165, 166-DI	5" and Up	304SS	.125 perf	Consult Factory	

Job Name _____

Contractor _____

Job Location _____

Approval _____

Engineer _____

Contractor's P.O. No. _____

Approval _____

Representative _____

Material

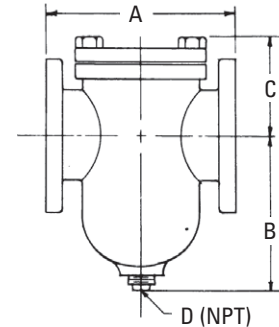
	165	166-DI
Body	Cast Iron ASTM A126-B	Ductile Iron ASTM 395 (2" – 16")
Cover	A126-B – 1¼" – 4", A516-70 – 5" – 24"	A516-70 – 5" – 24"
Gasket	Compressed Fiber	Compressed Fiber

Pressure Drop

- See Pressure Drop Charts in Technical Data section of Mueller Steam Specialty Engineering binder.

Dimensions and Weights

SIZE		DIMENSIONS						WEIGHT			
in.	mm	A		B		C		D (NPT)			
		in.	mm	in.	mm	in.	mm	in.	mm	lbs.	kgs.
165											
1¼"	32	6⅜	162	4⅞	105	3⅝	92	½	15	32	14
1½"	35	6½	165	4⅞	105	3⅝	92	½	15	32	14
2"	50	8⅝	219	5⅞	149	4⅜	111	½	15	32	14
2½"	65	7⅞	189	5⅞	138	3¾	95	¾	20	28	12
3"	80	8¾	222	5¼	133	5⅞	130	¾	20	37	16
3½"	90	9	229	6⅞	175	5¼	133	¾	20	53	24
4"	100	11¾	284	7⅞	200	5⅞	143	1	25	63	28
5"	125	12¼	311	10¼	260	5	127	1	25	98	44
6"	150	14	356	10⅞	270	5⅞	143	1¼	32	122	55
8"	200	17⅞	435	15½	394	7	178	1½	40	198	90
10"	250	22	559	16	406	9¼	235	1½	40	350	159
12"	300	25¼	645	23¾	603	11⅝	295	2	50	716	325
14"	350	29⅝	756	26¾	679	12¼	311	2	50	1010	459
16"	400	31⅞	810	29½	749	13¾	335	2	50	1320	600
18"	450	34	964	36	914	16¼	412	2	50	1916	870
20"	500	36⅝	930	40⅞	1038	17	432	2	50	2468	1121
24"	600	41½	1054	46¼	1174	19⅞	486	2	50	4550	2068



Models 165, 166-DI

SIZE		DIMENSIONS						WEIGHTS			
in.	mm	A		B		C		D (NPT)		166-DI	
		in.	mm	in.	mm	in.	mm	in.	mm	lbs.	kgs.
166-DI											
1¼"	32	-	-	4⅞	105	3⅝	92	½	15	40	18
1½"	35	-	-	4⅞	105	3⅝	92	½	15	40	18
2"	50	8⅞	219	5⅞	149	4⅜	111	½	15	40	18
2½"	65	8⅞	213	5⅞	138	3¾	95	¾	20	30	13
3"	80	9⅞	243	5¼	133	5⅞	130	¾	20	52	23
3½"	90	10⅞	270	6⅞	175	5¼	133	¾	20	71	32
4"	100	11½	292	7⅞	200	5⅞	143	1	25	90	40
5"	125	13¼	337	10¼	260	5	127	1	25	128	58
6"	150	15½	394	10⅞	270	5⅞	143	1¼	32	224	101
8"	200	18⅞	460	15½	394	7	178	1½	40	240	109
10"	250	23¼	591	16	406	9¼	235	1½	40	460	209
12"	300	26½	673	23¾	603	11⅝	295	2	50	854	388
14"	350	31¼	793	26¾	679	12¼	311	2	50	1182	537
16"	400	33½	851	29½	749	13¾	335	2	50	1540	700

Apply For Certified Drawings.

Mueller Steam Specialty product specifications in U.S. customary units and metric are approximate and are provided for reference only. For precise measurements, please contact Mueller Steam Specialty Technical Service. Mueller Steam Specialty reserves the right to change or modify product design, construction, specifications, or materials without prior notice and without incurring any obligation to make such changes and modifications on Mueller Steam Specialty products previously or subsequently sold.



A Watts Water Technologies Company

USA: St. Pauls, NC • Tel. 1-800-334-6259 • Fax 1-800-421-6772 • www.muellersteam.com

ES-MS-165_166DI 1020



© 2010 Mueller Steam Specialty