

For Residential and Commercial Snow Melt Applications

Job Name _____

Contractor _____

Job Location _____

Approval _____

Engineer _____

Contractor's P.O. No. _____

Approval _____

Representative _____

ProMelt® Contactor Pro Relay Panels

For ProMelt CP-50, CP-100, and CP-200

Panels

The CP-50, CP-100, and CP-200 are turn-key panels for activating a ProMelt snow melting system when used in conjunction with the ProMelt series of controls. They allow simple connection from the circuit breaker panel and have a manual override timer and heating indicator. Any CP series panel can be used as an "extension" panel that connects to another CP series panel and allows additional circuits to be controlled.

Specifications

CP-50, CP-100, CP-200 Specifications		
Terminals		Wiring Type
L1, L2 T1, T2	120, 208, 240, 277 VAC	12 AWG (Minimum)
PM	Class 2,	18-24 AWG (See sensor instructions for size and length limits)
24VAC, COMMON	24 VAC	
X1, X2	Dry Contact, N.O.	
Compatible Sensors	PM-L1 kit PM-L2 kit PM-L3 kit PM-519	
UL Listing	File E483460, UL 508A, CAN/CSA-C22.2 No. 14	
Environment	Indoor, NEMA 1 enclosure, operating temperature 0°F to 100°F (-18°C to 38°C)	



The ProMelt Contactor Pro Relay Panel is available in three configurations: CP-50 (single contactor), CP-100 (dual contactors), and CP-200 (quad contactors). Each ProMelt CP series panel is a NEMA Type 1 for mounting indoors on a wall with knockouts for conduit.



Features

Each ProMelt system can be operated by a variety of sensor, including the PM-L1, PM-L2, PM-L3 kits, and the PM-519.

Each sensor option is designed to operate a single system. Use a dedicated sensor and CP panel group for each snow melt zone.

CP series of panels can be used directly with any ProMelt cable or mat system. Power is connected directly to each contactor in the panel. It is pre-wired to the included transformer, terminal blocks, and the coil terminals on the provided contactors. It is not recommended to unwire, or tamper with existing wiring without pre-authorization from the factory.

⚠ CAUTION

This Engineering Sheet is not intended to provide full installation instructions and safety information. In order to avoid property damage or injury, please refer to the complete installation manual and product safety information provided with the product.

⚠ WARNING: General Safety Instructions

1. THIS UNIT SHOULD BE INSTALLED ONLY BY QUALIFIED PERSONNEL!
2. Disconnect all power from the control before opening the front cover plate.

✓	Description	Order #	Dimensions
	Contactor Pro CP-50	81012215	12" x 12" x 4"
	Contactor Pro CP-100	81012216	12" x 12" x 4"
	Contactor Pro CP-200	81012217	12" x 12" x 4"



A WATTS Brand

Watts Radiant product specifications in U.S. customary units and metric are approximate and are provided for reference only. For precise measurements, please contact Watts Radiant Technical Service. Watts Radiant reserves the right to change or modify product design, construction, specifications, or materials without prior notice and without incurring any obligation to make such changes and modifications on Watts Radiant products previously or subsequently sold.

NOTICE

Installation Parameters

These panels must be installed in accordance with local building codes, the National Electrical Code, or Canadian Electrical Code by qualified persons.

Disconnect power from all circuits prior to making any connections.

Do not energize circuits until all connections are made and all ProMelt mats/cables are fully installed and covered as required.

Read and follow the installation instructions for both the ProMelt snow melt mat/cable and the ProMelt sensor for additional information.

Mount the panel indoors on a wall or equivalent. Do not place in a confined air space where heat is not able to escape, such as a small closet.

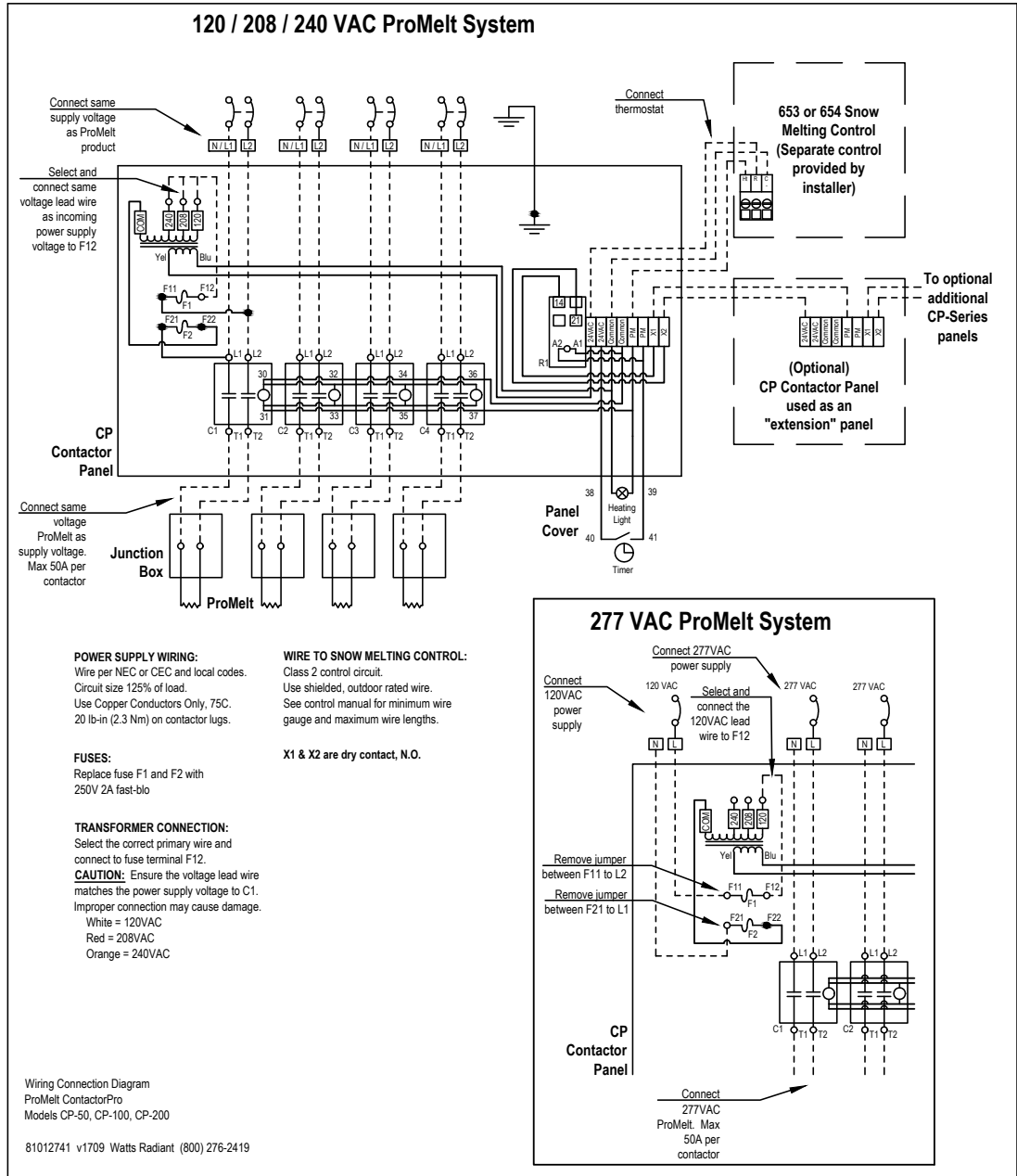
Properly secure the panel to the wall using the mounting holes provided.

Wire the panel according to the provided schematics.

A GFEP (Ground Fault Equipment Protection) type device **must be used** to protect each ProMelt circuit. Size circuits for 125% of the load.

This panel must be bonded to ground, as well as all conduit, junction boxes and other associated items per local code.

For detailed product installation and electrical wiring details, see the Contactor Pro installation sheet or the ProMelt Installation Manual.



Size 5.5" W x 6" H



USA: T: (888) 432-8932 • F: (417) 831-4067 • SunTouch.com
Canada: T: (905) 332-4090 • F: (905) 332-7068
Latin America: T: (52) 81-1001-8600 • SunTouch.com