

Introducing

# Quick-Connect

## Series 10 Quick-Connect Fittings and Valves

Sizes 1/4" OD – 1/2" OD



watts.com

**WATTS®**

## Introduction

Watts is proud to introduce the new Series 10 polypropylene fittings for POU installations and drinking water systems, beverage service, and water filtration applications.

- Patented O-Ring Guide
- Connects to multiple materials
- Rotates under pressure
- No tools needed
- All Series 10 fittings and valves are packaged in bags of 10 pieces

## Technical Information

### Temperature and Pressure:

Max. 150psi @ 70° F (10 Bar @ 20° C)  
 Max. 60psi @ 140° F (4 Bar @ 60° C)  
 Min. 33°F/1° C

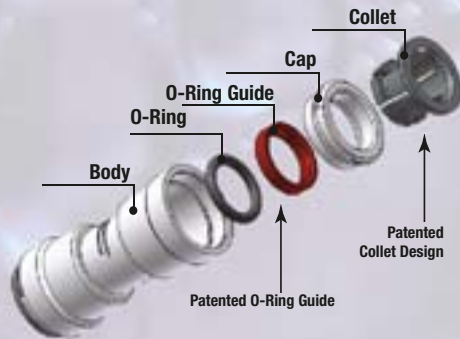
ANSI/NSF-61 approved

Series 10 fittings are made from FDA approved materials



For use with PEX, Polyethylene, Nylon, Polypropylene, Polyurethane, Copper, Brass, and mild steel tubing.

### O-Ring Guide is the Key!



All Watts connectors incorporate an exclusive O-Ring Guide for improved reliability. This unique feature insures zero-leak connections by:

- Protecting the O-Ring from damage during connection
- Increasing the connector's side load capacity
- Correctly aligning the tubing with the O-Ring every time
- Prevents the O-Ring from becoming dislodged

## TEES

### UNION TEES



Model	EDP/UPC Code	Size & Connection
1023B-04	0666115 / 098268426502	1/4" OD
1023B-06	0666116 / 098268426519	3/8" OD
1023B-08	0666117 / 098268426526	1/2" OD

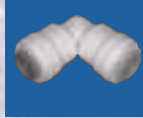
### REDUCING TEES



1024RB-060604	0666118 / 098268426533	3/8" OD x 3/8" OD x 1/4" OD
1024RB-080806	0666119 / 098268426540	1/2" OD x 1/2" OD x 3/8" OD

## ELBOWS

### UNION ELBOWS



1017B-04	0666120 / 098268426557	1/4" OD
1017B-06	0666121 / 098268426564	3/8" OD
1017B-08	0666122 / 098268426571	1/2" OD

### REDUCING UNION ELBOW



1017RB-0604	0666146 / 098268426816	3/8" OD x 1/4" OD
-------------	------------------------	-------------------

### STACKABLE ELBOWS



1018B-04	0666142 / 098268426779	1/4" OD
1018B-06	0666143 / 098268426786	3/8" OD
1018B-08	0666144 / 098268426793	1/2" OD

### MALE ELBOWS



1019B-0402	0666135 / 098268426700	1/4" OD x 1/8" NPTF
1019B-0404	0666136 / 098268426717	1/4" OD x 1/4" NPTF
1019B-0406	0666137 / 098268426724	1/4" OD x 3/8" NPTF
1019B-0604	0666138 / 098268426731	3/8" OD x 1/4" NPTF
1019B-0606	0666139 / 098268426748	3/8" OD x 3/8" NPTF
1019B-0806	0666140 / 098268426755	1/2" OD x 3/8" NPTF
1019B-0808	0666141 / 098268426762	1/2" OD x 1/2" NPTF

## CONNECTORS

### UNION CONNECTORS



1015B-04	0666110 / 098268426458	1/4" OD
1015B-06	0666111 / 098268426465	3/8" OD
1015B-08	0666112 / 098268426472	1/2" OD

### REDUCING UNION CONNECTORS



1015RB-0604	0666113 / 098268426489	3/8" OD x 1/4" OD
1015RB-0806	0666114 / 098268426496	1/2" OD x 3/8" OD



Sizes: 1/4" – 3/8" – 1/2"

# Series 10

## CONNECTORS (CONT.)

### FEMALE CONNECTORS



Model	EDP / UPC Codes	Size & Connection
1010B-0401	0666147 / 098268426823	1/4" OD x 7/16" UNS
1010B-0601	0666148 / 098268426830	3/8" OD x 7/16" UNS
1010B-0404	0666123 / 098268426588	1/4" OD x 1/4" NPTF
1010B-0604	0666124 / 098268426595	3/8" OD x 1/4" NPTF

### MALE CONNECTORS



1001B-0402	0666125 / 098268426601	1/4" OD x 1/8" NPTF
1001B-0404	0666126 / 098268426618	1/4" OD x 1/4" NPTF
1001B-0406	0666127 / 098268426625	1/4" OD x 3/8" NPTF
1001B-0408	0666128 / 098268426632	1/4" OD x 1/2" NPTF
1001B-0602	0666129 / 098268426649	3/8" OD x 1/8" NPTF
1001B-0604	0666130 / 098268426656	3/8" OD x 1/4" NPTF
1001B-0606	0666131 / 098268426663	3/8" OD x 3/8" NPTF
1001B-0608	0666132 / 098268426670	3/8" OD x 1/2" NPTF
1001B-0806	0666133 / 098268426687	1/2" OD x 3/8" NPTF
1001B-0808	0666134 / 098268426694	1/2" OD x 1/2" NPTF

## STEMS

### REDUCING STEM



1014RB-0604	0666145 / 098268426809	3/8" OD x 1/4" OD
-------------	------------------------	-------------------

### MALE STEMS



1027B-0402	0666104 / 098268426397	1/4" OD x 1/8" NPTF
1027B-0404	0666105 / 098268426403	1/4" OD x 1/4" NPTF
1027B-0604	0666106 / 098268426410	3/8" OD x 1/4" NPTF
1027B-0606	0666107 / 098268426427	3/8" OD x 3/8" NPTF
1027B-0806	0666108 / 098268426434	1/2" OD x 3/8" NPTF

## STOPS

### END STOP



1045B-04	0666109 / 098268426441	1/4" OD
----------	------------------------	---------

## VALVES

### STOP VALVES



1039B-04	0666102 / 098268426373	1/4" OD
1039B-06	0666103 / 098268426380	3/8" OD

### MALE STOP VALVES



1062B-04	0666100 / 098268426359	1/4" OD x 1/4" NPTF
1062B-06	0666101 / 098268426366	3/8" OD x 3/8" NPTF

### FEMALE ANGLE VALVES



1053B-0404	0666149 / 098268426847	1/4" OD x 1/4" NPTF
1053B-0604	0666150 / 098268427134	3/8" OD x 1/4" NPTF



### CAUTION!

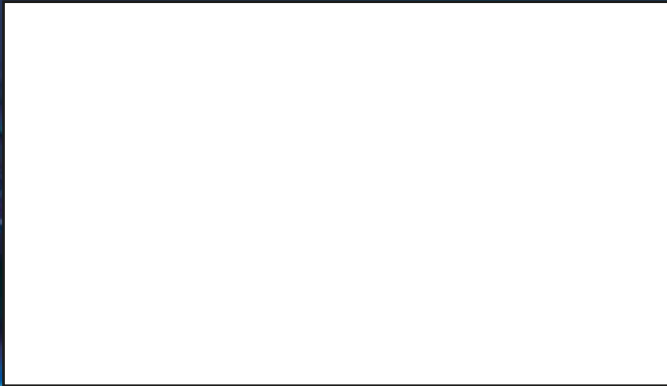
The polypropylene material in this Watts product can be compromised by exposure to volatile organic compounds (VOCs) and caustic chemicals. Therefore, DO NOT expose this product to any such chemical or foreign substance, which would include exposure to the following products:

Pipe dopes (liquid thread sealants), leak check compounds, bug sprays, lubricants, cleaners, paints, bleaches, acids, solder fluxes, plastic piping primers and cements, oxidizing agents, alkaline solutions, thinners, fuels, oil based caulk, hydrocarbons, spray foam or foaming agents (i.e. insulation).

Teflon tape is acceptable and can be used for threaded connections.

Failure to follow these instructions will void the warranty and possibly result in leaks and water damage.

REPRESENTED BY:



**Quick-Connect Plumbing Solutions**



**USA:** 815 Chestnut St., No. Andover, MA 01845-6098; [www.watts.com](http://www.watts.com)

**Canada:** 5435 North Service Rd., Burlington, ONT. L7L 5H7; [www.wattscanada.ca](http://www.wattscanada.ca)

F-QC-Series 10 0834

© Watts, 2008