

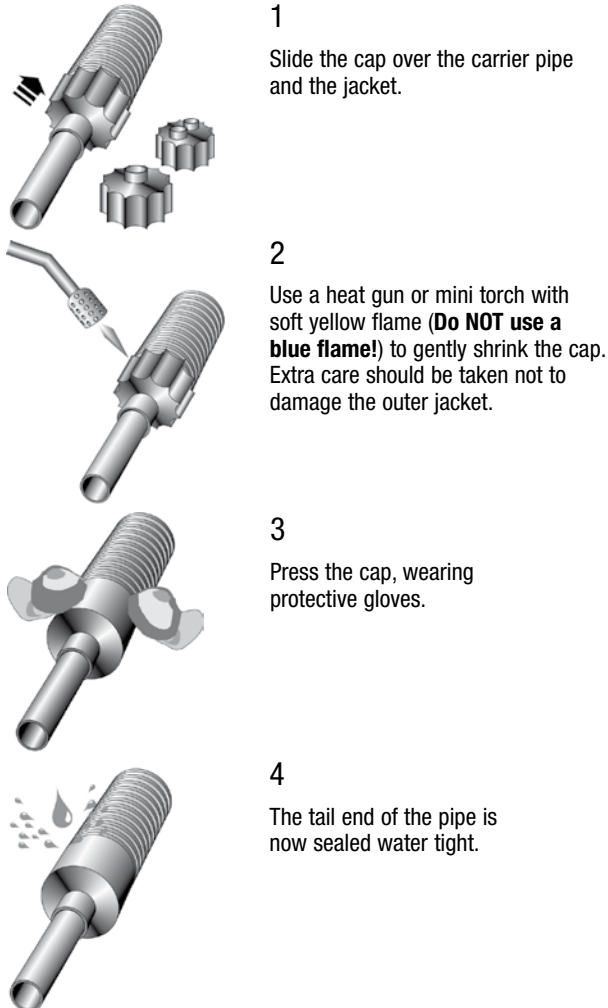
## For Residential or Commercial Radiant Heating and Snow Melt Applications

### Insulated Barrier Heating PEX Shrink Caps

#### Used with All Insulated Barrier Heating PEX Pipe

Insulated Barrier Heating PEX Shrink Caps provide a water proof seal at the point where the Insulated Barrier Heating PEX transitions to a connection. Shrink Caps are designed to protect the interior insulation from water, as well as other jobsite debris.

#### Assembly instructions for Shrink Caps



1

Slide the cap over the carrier pipe and the jacket.

2

Use a heat gun or mini torch with soft yellow flame (**Do NOT use a blue flame!**) to gently shrink the cap. Extra care should be taken not to damage the outer jacket.

3

Press the cap, wearing protective gloves.

4

The tail end of the pipe is now sealed water tight.



**Insulated Barrier Heating PEX Water proof Shrink Cap.**

Qty	Description	Order #
1	Dual Pipe Shrink Cap 1" (25.4 mm) x 2, 125mm (4.9") o.d.	0955359
1	Dual Pipe Shrink Cap 32mm (1.25") x 2, 125mm (4.9") o.d.	0955359

#### ▲ CAUTION

BEFORE INSTALLING ANY COMPONENTS THOROUGHLY READ the **Insulated Barrier Heating Pex Installation Manual** AVAILABLE AT [WWW.RADIANT.WATTS.COM](http://WWW.RADIANT.WATTS.COM) FOR FURTHER INFORMATION INCLUDING ADDITIONAL PRODUCT SAFETY INFORMATION. This information is not intended to provide full installation guidelines or the experience of a trained product installer. To the extent instructions are not consistent with local building or plumbing codes, the local codes should be followed. FAILURE TO COMPLY WITH PROPER INSTALLATION INSTRUCTIONS COULD DAMAGE TUBING AND FITTINGS CAUSING WATER DAMAGE AND/OR DAMAGE TO THE PIPING SYSTEM WHICH CAN RESULT IN PROPERTY DAMAGE AND/OR PERSONAL INJURY.

Do not splice multiple lengths of Insulated Barrier Heating PEX tubing together as this will result in increased pressure drops. Refer to the Insulated Barrier Heating PEX Installation Manual for recommended circuit lengths and other tubing installation guidelines.

Do not solder near, or overheat, any Insulated Barrier Heating PEX connection. Extreme temperatures associated with soldering may seriously damage the Insulated Barrier Heating PEX and will void warranty.

Repairing Insulated Barrier Heating PEX that has been in service requires special attention, particularly when glycol has been used. Any residual amounts of glycol or any other coating or debris inside the tube must be removed and all fitting surfaces must be clean before making connections.

Use of materials not supplied by Watts to make connection may result in leaks. Watts Insulated Barrier Heating PEX fittings are engineered to work together. Watts extends no warranty – express or implied – to any failure or damage of any kind resulting in use of materials not specified by Watts. See Insulated Barrier Heating PEX Warranty for details.

#### ▲ WARNING

Keep hands away from any open flame. Do not touch – surface of shrinkwrap will be hot. Wear gloves when handling.

#### CALIFORNIA PROPOSITION 65 WARNING

Warning: This product contains chemicals known to the State of California to cause cancer and birth defects or other reproductive harm. (California law requires this warning to be given to customers in the State of California).  
For more information: [www.watts.com/prop65](http://www.watts.com/prop65).

**Limited Warranty:** Watts Regulator Co. (the "Company") warrants each product to be free from defects in material and workmanship under normal usage for a period of one year from the date of original shipment. In the event of such defects within the warranty period, the Company will, at its option, replace or recondition the product without charge.

**THE WARRANTY SET FORTH HEREIN IS GIVEN EXPRESSLY AND IS THE ONLY WARRANTY GIVEN BY THE COMPANY WITH RESPECT TO THE PRODUCT. THE COMPANY MAKES NO OTHER WARRANTIES, EXPRESS OR IMPLIED. THE COMPANY HEREBY SPECIFICALLY DISCLAIMS ALL OTHER WARRANTIES, EXPRESS OR IMPLIED, INCLUDING BUT NOT LIMITED TO THE IMPLIED WARRANTIES OF MERCHANTABILITY AND FITNESS FOR A PARTICULAR PURPOSE.**

The remedy described in the first paragraph of this warranty shall constitute the sole and exclusive remedy for breach of warranty, and the Company shall not be responsible for any incidental, special or consequential damages, including without limitation, lost profits or the cost of repairing or replacing other property which is damaged if this product does not work properly, other costs resulting from labor charges, delays, vandalism, negligence, fouling caused by foreign material, damage from adverse water conditions, chemical, or any other circumstances over which the Company has no control. This warranty shall be invalidated by any abuse, misuse, misapplication, improper installation or improper maintenance or alteration of the product.

Some States do not allow limitations on how long an implied warranty lasts, and some States do not allow the exclusion or limitation of incidental or consequential damages. Therefore the above limitations may not apply to you. This Limited Warranty gives you specific legal rights, and you may have other rights that vary from State to State. You should consult applicable state laws to determine your rights. **SO FAR AS IS CONSISTENT WITH APPLICABLE STATE LAW, ANY IMPLIED WARRANTIES THAT MAY NOT BE DISCLAIMED, INCLUDING THE IMPLIED WARRANTIES OF MERCHANTABILITY AND FITNESS FOR A PARTICULAR PURPOSE, ARE LIMITED IN DURATION TO ONE YEAR FROM THE DATE OF ORIGINAL SHIPMENT.**

# WATTS®

A Watts Water Technologies Company

**USA:** No. Andover, MA • Tel. (855) 699-2887 • Fax: (978) 794-1848 • [radiant.watts.com](http://radiant.watts.com)  
**Canada:** Burlington, ONT. • Tel. (905) 332-4090 • Fax: (905) 332-7068 • [radiant.watts.com](http://radiant.watts.com)

IS-Insulated-Barrier-Heating-PEX-End-Caps 1146

EDP#81014902

© 2011 Watts

## For Residential or Commercial Radiant Heating and Snow Melt Applications

### Insulated Barrier Heating PEX Dust Caps

Used with All Insulated Barrier Heating PEX Pipe

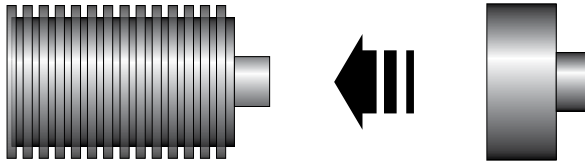
Insulated Barrier Heating PEX Dust Caps are to be used in areas where water is not present, such as where Insulated Barrier Heating PEX transitions into a building. **If the environmental conditions are unknown, use a water tight Shrink Cap.**

#### Assembly instructions for Dust Caps

Slide the cap over the carrier pipe and jacket and tape the cap in place.



#### Insulated Barrier Heating PEX Non-water proof Dust Caps



Qty	Description	Order #
1	Dual Pipe Dust Cap 1" (25.4 mm) x 2, 125mm (4.9") o.d.	0955358
1	Dual Pipe Dust Cap 32mm (1.25") x 2, 125mm (4.9") o.d.	0955360

#### CALIFORNIA PROPOSITION 65 WARNING

Warning: This product contains chemicals known to the State of California to cause cancer and birth defects or other reproductive harm. (California law requires this warning to be given to customers in the State of California).

For more information: [www.watts.com/prop65](http://www.watts.com/prop65).

**Limited Warranty:** Watts Regulator Co. (the "Company") warrants each product to be free from defects in material and workmanship under normal usage for a period of one year from the date of original shipment. In the event of such defects within the warranty period, the Company will, at its option, replace or recondition the product without charge.

**THE WARRANTY SET FORTH HEREIN IS GIVEN EXPRESSLY AND IS THE ONLY WARRANTY GIVEN BY THE COMPANY WITH RESPECT TO THE PRODUCT. THE COMPANY MAKES NO OTHER WARRANTIES, EXPRESS OR IMPLIED. THE COMPANY HEREBY SPECIFICALLY DISCLAIMS ALL OTHER WARRANTIES, EXPRESS OR IMPLIED, INCLUDING BUT NOT LIMITED TO THE IMPLIED WARRANTIES OF MERCHANTABILITY AND FITNESS FOR A PARTICULAR PURPOSE.**

The remedy described in the first paragraph of this warranty shall constitute the sole and exclusive remedy for breach of warranty, and the Company shall not be responsible for any incidental, special or consequential damages, including without limitation, lost profits or the cost of repairing or replacing other property which is damaged if this product does not work properly, other costs resulting from labor charges, delays, vandalism, negligence, fouling caused by foreign material, damage from adverse water conditions, chemical, or any other circumstances over which the Company has no control. This warranty shall be invalidated by any abuse, misuse, misapplication, improper installation or improper maintenance or alteration of the product.

Some States do not allow limitations on how long an implied warranty lasts, and some States do not allow the exclusion or limitation of incidental or consequential damages. Therefore the above limitations may not apply to you. This Limited Warranty gives you specific legal rights, and you may have other rights that vary from State to State. You should consult applicable state laws to determine your rights. **SO FAR AS IS CONSISTENT WITH APPLICABLE STATE LAW, ANY IMPLIED WARRANTIES THAT MAY NOT BE DISCLAIMED, INCLUDING THE IMPLIED WARRANTIES OF MERCHANTABILITY AND FITNESS FOR A PARTICULAR PURPOSE, ARE LIMITED IN DURATION TO ONE YEAR FROM THE DATE OF ORIGINAL SHIPMENT.**

# WATTS®

A Watts Water Technologies Company

USA: No. Andover, MA • Tel. (855) 699-2887 • Fax: (978) 794-1848 • [radiant.watts.com](http://radiant.watts.com)  
Canada: Burlington, ONT. • Tel. (905) 332-4090 • Fax: (905) 332-7068 • [radiant.watts.com](http://radiant.watts.com)