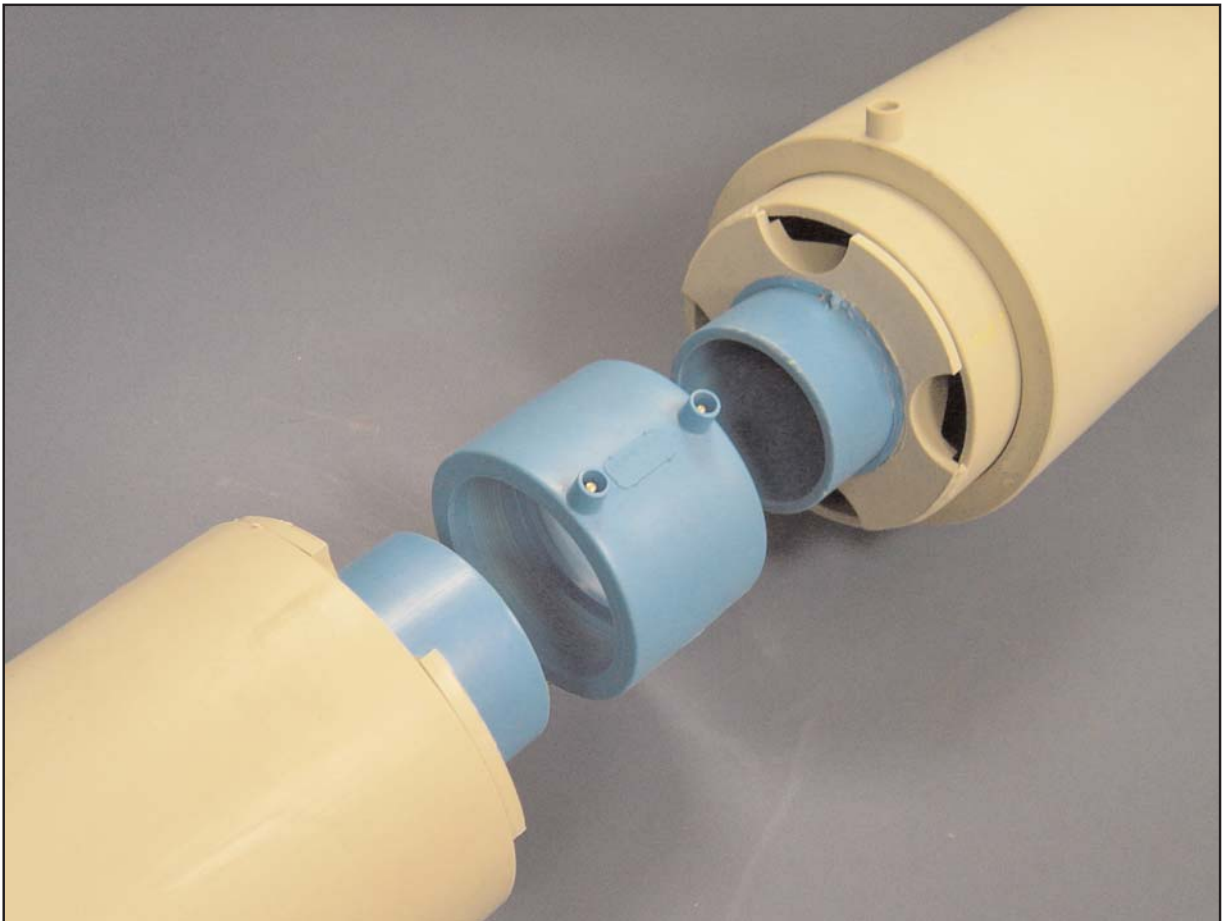


ORION

CFx2

DOUBLE CONTAINMENT
PIPING SYSTEMS

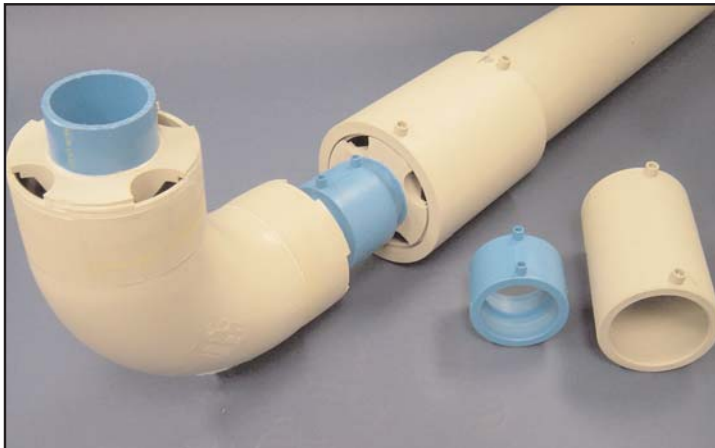


Orion introduces CFx2 Double containment piping systems.....

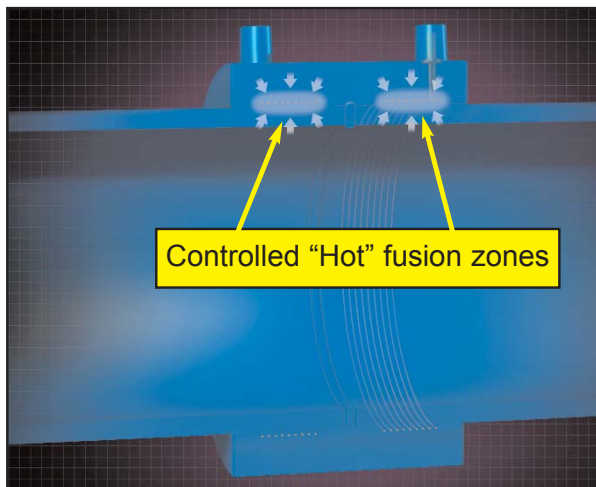
The **CFx2** system utilizes our Clamp-Free Rionfuse CF couplings to join a variety of piping sizes and materials. **CFx2** is one of the easiest double containment systems to install.

CFx2 allows for significant labor savings over the traditional double containment systems. Fittings are manufactured with our patented TFT conical anchors to permanently secure the carrier and containment systems together and control piping movement. The carrier piping is installed and tested independantly of the containment system allowing the carrier joints to be tested and visually inspected prior to installing the containment system.

Versatility, ease of installation, reliable jointing and simple design all make **CFx2** the #1 choice in the industry for double containment piping systems.



Sch 40 IPS inside 45 psi rated materials are supplied as standard, with many other material and wall thickness configurations available



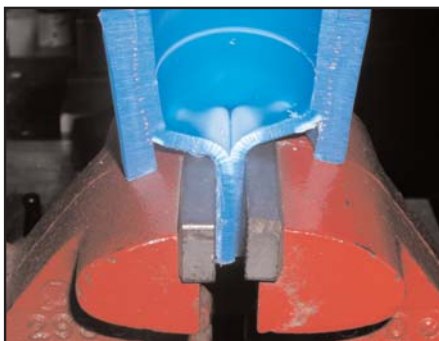
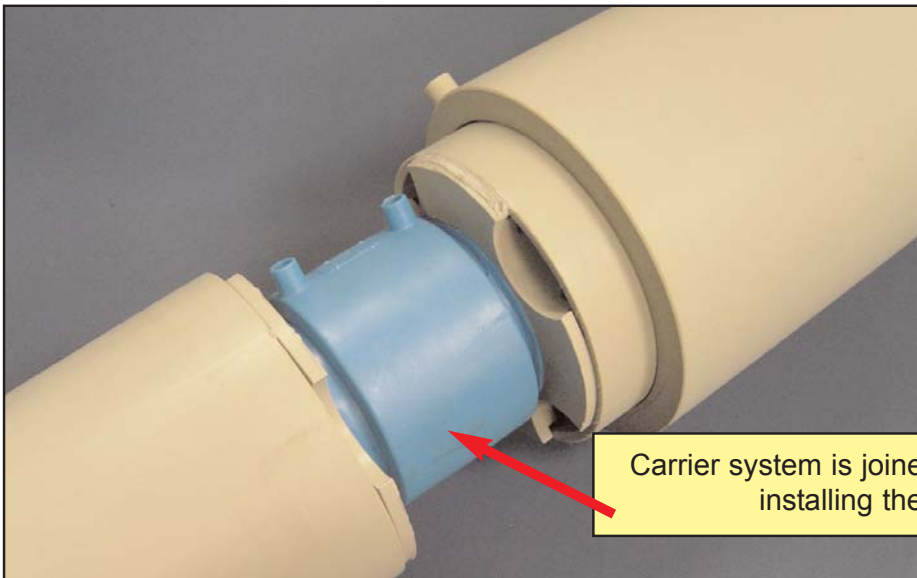
Controlled Fusion Joining Technology
Provides the strongest joint in the industry



Patented Conical Anchors
Support the carrier system to
the containment system

Product Features and Benefits

- **Sch 40 IPS x 45 psi rated** wall thickness as standard. Other wall thickness configurations available
- **Proven Technology** - Our jointing method has been used worldwide for over 20 years.
- **Carrier and containment** systems are installed and tested independantly of one another, making visual inspection of the carrier joints possible before the containment is sealed.
- **Ease of installation.** CFx2 installs faster and easier than other double containment systems. This means big labor savings and on-time project completions.
- **Variety of materials** including PP x PP, PVDF x PP and PVDF x PVDF
- **Quality Construction.** Orion manufactures all of our systems to the highest quality standards.



Rionfuse CF Joints meet crush test standards commonly required in the natural gas industry



Rionfuser Electrofusion Micro-Processor Provides consistent jointing with downloading capabilities



CFx2

Sample Specification - Short Form

ORION FITTINGS

Ph# 913-342-1653

2850 Fairfax Trafficway
Kansas City, KS 66115

www.orionfittings.com

Fax# 913-342-7218