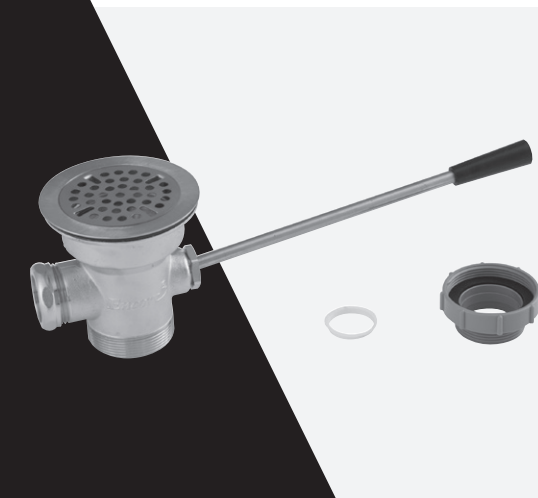
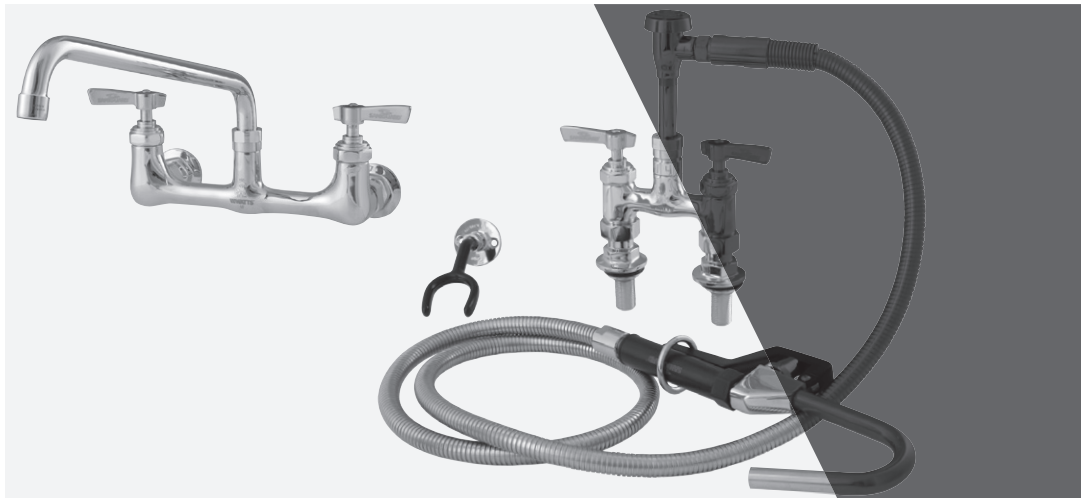
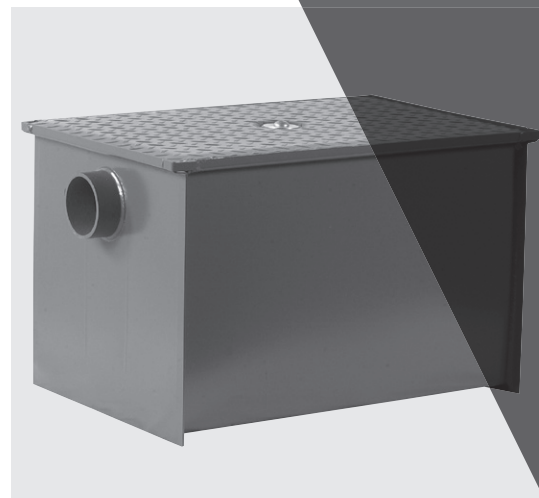


Price List

Commercial Foodservice Plumbing Solutions



- Pre-rinse Units & Components
- Faucets & Accessories
- Specialty Faucets and Sprays
- Pot and Glass Fillers
- Water Stations, Drains & Parts
- Grease Interceptors



Effective July 1, 2019

All prices supersede previous issues, are temporary and subject to change without notice.

Table of Contents

Hydro-Force™ Commercial Plumbing Products	3-5
Hydro-Force™ Economy Commercial Plumbing Products	6-7
Grease Interceptors	8



Terms and Conditions

TERMS: Net 30 Days. Minimum order \$75 net. Orders below minimum and broken cartons are subject to a \$25.00 handling fee.

1. ACCEPTANCE.

If this writing differs in any way from the terms and conditions of Immediate Buyer's ("Buyer") order or if this writing is construed as an acceptance or as a confirmation acting as an acceptance, then Dormont's ("Seller") acceptance is EXPRESSLY MADE CONDITIONAL ON BUYER'S ASSENT TO ANY TERMS AND CONDITIONS CONTAINED HEREIN THAT ARE DIFFERENT FROM OR ADDITIONAL TO THOSE CONTAINED IN BUYER'S WRITING. Further, this writing shall be deemed notice of objection to such terms and conditions of Buyer. If this writing is construed as the offer, acceptance hereof is EXPRESSLY LIMITED TO THE TERMS AND CONDITIONS CONTAINED HEREIN. In any event, Buyer's acceptance of the goods shall manifest Buyer's assent to Seller's terms and conditions. No addition to or modification of these items will be effective unless set forth in writing and agreed to by Seller.

2. WARRANTIES AND REMEDIES.

a. Warranty.

Seller warrants to Buyer that it holds and will pass marketable title to the goods sold hereunder. Certain of Seller's products come with a Limited Warranty. If Buyer is not the end user of the goods sold hereunder, Buyer agrees to provide to any immediate buyer ("Remote Purchaser") the Limited Warranty and Disclaimer to End-Use (Remote) Purchasers issued by Seller. For the Limited Warranty applicable to Seller's products, please see Seller's published literature that accompanies or relates to those products. Any remedies stated in such warranties are the exclusive and only remedies provided by the Seller for breach of warranty. Certain of Seller's Limited Warranties exclude coverage for any product that is moved to a new location. Seller's products should never be reused.

b. Exclusions and Conditions.

Seller's obligations with respect to the express warranties and remedies contained herein are conditioned on the following: (i) Buyer's return of the nonconforming goods, if authorized by Seller (excluding labor and freight); and (ii) be installed by individuals trained and certified as a professional with respect to such installations, and be installed, used, repaired and maintained by Buyer and Remote Purchaser in accordance with Seller's warnings and instructions, National, State/Province and Local codes or regulations (i.e. National Fuel Code (ANSI Z223.2/NFPA 54); International Fuel Gas Code; Uniform Plumbing Code), standards set by American National Standard Institute, Inc. (ANSI) and/or Canadian Standards Association (CSA) Standards.

3. DISCLAIMER OF IMPLIED WARRANTIES.

SELLER GIVES NO WARRANTIES TO BUYER EXCEPT THOSE EXPRESSLY CONTAINED HEREIN. SELLER DISCLAIMS ALL OTHER WARRANTIES IMPLIED BY LAW, USAGE OF THE TRADE, COURSE OF DEALING OR COURSE OF PERFORMANCE INCLUDING, BUT NOT LIMITED TO, THE IMPLIED WARRANTIES OF MERCHANTABILITY AND FITNESS FOR A PARTICULAR PURPOSE.

4. LIMITATIONS OF LIABILITY.

The following limitations of Seller's liability are acknowledged by the parties to be fair and reasonable and shall apply to any act or omission hereunder, and to any breach of this contract of which these terms and conditions form a part:

a. Disclaimer of Damages.

IN NO EVENT SHALL SELLER BE LIABLE FOR SPECIAL, INDIRECT, CONSEQUENTIAL OR INCIDENTAL DAMAGES WHETHER ARISING UNDER CONTRACT, WARRANTY, TORT, NEGLIGENCE, STRICT LIABILITY OR ANY OTHER THEORY OF LIABILITY. Such damages include but are not limited to loss of profits, loss of use of the goods, damage to property, and claims of third parties.

b. Replacement of Fittings.

Buyer acknowledges that if Seller supplies adapter fittings, and Buyer replaces the adapter fittings supplied by Seller with fittings produced by another manufacturer, then all of Seller's warranties to Buyer and to Remote Purchaser will be voided and Buyer will assume all liability for any damage, injury or loss suffered by Remote Purchaser arising out of this unauthorized modification.

c. Notice and Time of Claims.

(i) Buyer agrees to inspect all products against shipping papers and for damage or shortage upon receipt of goods at destination; and (ii) Every claim for loss, damage in transit, or other cause visible upon inspection shall be made with carrier. Claims for shortage must be made within five (5) days of receipt.

5. TERMS.

Net 30 Days – minimum order of \$75. Interest on accounts overdue more than thirty (30) days will be charged at 2% per month or the highest rate permitted by law, whichever is lower. Orders below minimum and broken cartons are subject to a \$25.00 handling fee. Prices are subject to change. Buyer shall be liable for any collection costs or attorneys' fees incurred as a result of Buyer's failure to pay its account on time.

6. SHIPPING TERMS.

Prepaid and allowed on \$1500 net and over. Under \$1500 net, shipments shall be F.O.B. factory. Buyer is responsible for all freight charges. The above shall apply only to shipments within the continental United States of America unless otherwise indicated by Seller. The method of shipment and carrier shall be selected by Seller.

7. RETURNS.

No returns are to be made to Seller without first obtaining a return authorization number. The return authorization number must be prominently displayed on the return packaging. Absolutely no returns will be accepted or credited without this prior approval. Returns are subject to a 25% restocking charge plus any transportation charges incurred by Seller. Credits will be given only for items that are determined to be eligible for resale by Seller.

8. TAXES.

The Buyer will pay, or reimburse Seller if it pays, any and all taxes or tariffs or any other similar charges imposed upon this contract, the goods covered hereby or the delivery or use or resale thereof.

9. APPLICABLE LAW.

All questions arising hereunder shall be interpreted and resolved in accordance with the Commercial Code of the Commonwealth of Pennsylvania without regard to its conflict of law provisions and excluding the United Nations Convention on the International Sale of Goods.

10. INDEMNIFICATION.

Buyer agrees to indemnify, hold harmless, and defend Seller from and against all claims and lawsuits, including attorney's fees, to the extent that Buyer's negligent acts or omissions to act cause injury, damage or loss to customers of Seller's products.

NOTE: Prices and terms are subject to change without notice and supersede all previous quotations. Seller reserves the right to change or modify product design or construction without prior notice and without incurring any obligation to make such changes and modifications on products previously or subsequently sold. Buyer assumes all responsibility for the final selection, testing and validation of products, including the selection of products for a particular application.

Hydro-Force™ Commercial Plumbing Products

Model #	Ordering Code	Description	List Price (ea/ctn.) USD
Wall-Mount Pre-Rinse Units			
LFP-WS8B	0239927	Wall-mount Pre-Rinse with Wall Bracket	681.72
LFP-WS8B-AF12	0239928	Wall-mount Pre-Rinse with Wall Bracket and 12" Add-on Faucet	963.38
LFRRMK-W	0239863	Wall-mount Kit	51.43
Deck-Mount Pre-Rinse Units			
LFP-DS4B	0239902	Deck-mount Pre-Rinse with Wall Bracket	711.02
LFP-DS4B-AF12	0239903	Deck-mount Pre-Rinse with Wall Bracket and 12" Add-on Faucet	976.53
Pre-Rinse Add-On Faucets			
LFAF-06	0239800	Add-On Faucet with 6" Spout	154.28
LFAF-08	0239802	Add-On Faucet with 8" Spout	157.87
LFAF-10	0239804	Add-On Faucet with 10" Spout	159.07
LFAF-12	0239806	Add-On Faucet with 12" Spout	163.25
LFAF-14	0239808	Add-On Faucet with 14" Spout	172.22
LFAF-16	0239810	Add-On Faucet with 16" Spout	184.78
Pre-Rinse Spray Heads			
LFPRSH-S	0239926	Pre-Rinse Spray Head Assembly	124.38
LFPRSH-A	0239920	Angled Pre-Rinse Spray Head Assembly	147.71
LFPRSH-PF	0239924	Pot Filler Spray Head Assembly	164.45
Pre-Rinse Replacement Hoses			
LFPRH-G44	0239916	44" Pre-Rinse Hose Assembly with Grip	128.57
LFPRH-G60	0239917	60" Pre-Rinse Hose Assembly with Grip	166.84
LFPRH-G72	0239918	72" Pre-Rinse Hose Assembly with Grip	182.39
LFPRH-G96	0239919	96" Pre-Rinse Hose Assembly with Grip	215.28
Pre-Rinse Replacement Parts			
PRA-WB	0241000	Wall Bracket	74.45
PRA-WH	0241635	Wall Hook	74.45
PRA-HAS	0240401	Hook and Screw Assembly	23.32
PRA-S	0240758	Spring	68.17
LFPRSH-FP	0239923	Face Plate—1.6 GPM	12.86
LFPRSH-RK	0239925	Spray Head Repair Kit	56.51
LFPRH-SPR	0239913	Spring Retainer	57.71
LFPRH-G	0239915	Hose Grip	37.38
PRSH-BR	0239921	Bumper Ring	10.47
LFPRSH-BV	0239922	Button Valve Assembly	46.35
LFPRH-R	0239912	18" Riser Pipe	60.40
LFPRHA-C	0239914	Hose Adapter—3/8" NPT	16.74
LFPRPB-W8	68003780	Wall-mount Pre-rinse Base, 8" Center	273.29



Model #	Ordering Code	Description	List Price (ea./ctn.) USD
Wall-Mount Faucets			
LFF-WST8-S08S	0239893	Wall-mount Faucet, 8" Adjustable Center with 8" Swivel Spout	307.97
LFF-WST8-S10S	0239895	Wall-mount Faucet, 8" Adjustable Center with 10" Swivel Spout	307.97
LFF-WST8-S12S	0239897	Wall-mount Faucet, 8" Adjustable Center with 12" Swivel Spout	310.36
LFF-WST8-S14S	0239899	Wall-mount Faucet, 8" Adjustable Center with 14" Swivel Spout	312.75
LFF-WST8-S16S	0239975	Wall-mount Faucet, 8" Adjustable Center with 16" Swivel Spout	318.14
LFF-WST8-G06S	0239891	Wall-mount Faucet, 8" Adjustable Center with 6" Swivel Gooseneck Spout	320.53
Deck-Mount Faucets			
LFF-DST4-S08S	0239838	Deck-mount Faucet, 4" Adjustable Center with 8" Swivel Spout	371.96
LFF-DST4-S10S	0239840	Deck-mount Faucet, 4" Adjustable Center with 10" Swivel Spout	376.74
LFF-DST4-S12S	0239842	Deck-mount Faucet, 4" Adjustable Center with 12" Swivel Spout	379.73
LFF-DST4-G06S	0239836	Deck-mount Faucet, 4" Adjustable Center with 6" Swivel Gooseneck Spout	383.32
LFF-DST8-S08S	0239846	Deck-mount Faucet, 8" Adjustable Center with 8" Swivel Spout	410.23
LFF-DST8-S10S	0239848	Deck-mount Faucet, 8" Adjustable Center with 10" Swivel Spout	412.62
LFF-DST8-S12S	0239850	Deck-mount Faucet, 8" Adjustable Center with 12" Swivel Spout	415.01
LFF-DST8-G09S	0239844	Deck-mount Faucet, 8" Adjustable Center with 9-1/2" Swivel Gooseneck Spout	428.17
Double- & Single-Pantry Faucets			
LFF-DSP-S06S	0239832	Single-pantry Faucet, 6" Swivel Spout	284.65
LFF-DSP-S12S	0239834	Single-pantry Faucet, 12" Swivel Spout	287.04
LFF-DSP-G06S	0239828	Single-pantry Faucet, 6" Gooseneck Swivel Spout	294.81
LFF-DSP-G09S	0239830	Single-pantry Faucet, 9-1/2" Gooseneck Swivel Spout	300.20
LFF-DDP-S12S	0239826	Double-pantry Faucet, 12" Swivel Spout	418.00
LFF-DDP-G06S	0239820	Double-pantry Faucet, 6" Gooseneck Swivel Spout	420.39
Workboard/Bar Sink Faucets			
LFF-WBF4-S06S	0239889	Wall-mount Workboard/Bar Faucet, 4" Center, 6" Swivel Spout	300.20
LFF-WBF4-G03S	0239883	Wall-mount Workboard/Bar Faucet, 4" Center, 3-1/2" Gooseneck Swivel Spout	302.59
LFF-WBF4-G06S	0239885	Wall-mount Workboard/Bar Faucet, 4" Center, 6" Gooseneck Swivel Spout	304.98
LFF-WBF4-G09S	0239887	Wall-mount Workboard/Bar Faucet, 4" Center, 9-1/2" Gooseneck Swivel Spout	351.03
LFF-DBF4-S06S	0239818	Deck-mount Workboard/Bar Faucet, 4" Center, 6" Swivel Spout	287.04
LFF-DBF4-G03S	0239812	Deck-mount Workboard/Bar Faucet, 4" Center, 3-1/2" Gooseneck Swivel Spout	290.03
LFF-DBF4-G06S	0239814	Deck-mount Workboard/Bar Faucet, 4" Center, 6" Gooseneck Swivel Spout	290.03
LFF-DBF4-G09S	0239816	Deck-mount Workboard/Bar Faucet, 4" Center, 9-1/2" Gooseneck Swivel Spout	292.42
Faucet Spouts			
LFFRS-06SS	0239870	6" Swivel Spout	48.74
LFFRS-08SS	0239871	8" Swivel Spout	51.43
LFFRS-10SS	0239873	10" Swivel Spout	55.32
LFFRS-12SS	0239874	12" Swivel Spout	59.20
LFFRS-14SS	0239875	14" Swivel Spout	62.79
LFFRS-16SS	0239876	16" Swivel Spout	89.70
LFFRS-18SD	0239877	18" Double-jointed Swivel Spout	115.41
LFFRS-24SD	0239878	24" Double-jointed Swivel Spout	133.35
LFFRS-03SG	0239868	3-1/2" Gooseneck Swivel Spout	61.59
LFFRS-06SG	0239869	6" Gooseneck Swivel Spout	64.29
LFFRS-09SG	0239872	9-1/2" Gooseneck Swivel Spout	73.26
Faucet Bases			
LFFRFB-W8	0239860	Wall-mount Faucet Base, 8" Center	273.29
LFFRFB-D4	0239852	Deck-mount Faucet Base, 4" Center	275.68
LFFRFB-D8	0239854	Deck-mount Faucet Base, 8" Center	285.84
LFFRFB-SP	0239858	Single-Pantry Faucet Base	199.13
LFFRFB-BD4	0239931	Deck-mount Bar Faucet Base, 4" Center	218.27
LFFRFB-BW4	0239933	Wall-mount Bar Faucet Base, 4" Center	237.41

Model #	Ordering Code	Description	List Price (ea/ctn.) USD
Faucet Replacement Parts			
LFFRRV-H	0239867	Replacement Valve—Hot	66.68
LFFRRV-C	0239866	Replacement Valve—Cold	66.68
LFFRMK-W	0239863	Wall-mount Kit	51.43
LFFRMK-D	0239862	Deck-mount Kit	53.82
FRFH-W	0241647	Wrist Blade Faucet Handle Repair Kit	57.71
FRFH-S	0240604	Standard Individual Faucet Handle with Red and Blue Indicators	26.91
LFFRVB-A	0239881	Atmospheric Vacuum Breaker—3/8"	87.31
LFFRVB-B	0239882	Atmospheric Vacuum Breaker—1/2"	97.47
LFFRSA-A	0239879	Swing-to-Rigid Adapter	25.71
LFFRSA-B	0239880	Rigid-to-Swing Adapter	29.60
LFFRSA-C	68003775	Hydro-Force-to-T&S adapter—makes Hydro-Force base compatible with T&S spouts	28.41
LFFRRV-BC	0239864	Workboard/Bar Faucet Replacement Valve—Cold	61.59
LFFRRV-BH	0239865	Workboard Bar Faucet Replacement Valve—Hot	61.59
Utility Sprays			
LFUS-W8VB	0239942	Wall-mount Utility Spray, 8" Adjustable Center, with Vacuum Breaker and 72" Hose	752.28
LFUS-D4VB	0239938	Deck-mount Utility Spray, 4" Adjustable Center with Vacuum Breaker and 72" Hose	762.45
LFUS-D8VB	0239940	Deck-mount Utility Spray, 8" Adjustable Center with Vacuum Breaker and 72" Hose	775.01
Pot Fillers			
LFPPF-W8VB	0239910	Wall-mount Pot Filler, 8" Adjustable Center with Vacuum Breaker and 72" Hose	776.80
LFPPF-D4VB	0239906	Deck-mount Pot Filler, 4" Adjustable Center with Vacuum Breaker and 72" Hose	781.59
Glass Fillers			
LFGF-D	0239901	Deck-mount Glass Filler	187.17
LFGF-W	0239945	Wall-mount Glass Filler	175.81
Water Station			
LFGFS	0239944	Complete Water Station: Self-Rimming Stainless Steel Sink, Deck-mount Glass Filler	475.41
Twist-Handle Drains			
W-TA-A	0239964	Twist-handle Drain with 3" Opening and 1-1/2" Drain Outlet	166.84
W-TA-B	0239966	Twist-handle Drain with 3" Opening and 2" Drain Outlet	166.84
W-TA-AF	0239965	Twist-handle Drain with 3" Opening, 1-1/2" Drain Outlet and 1-1/4" Overflow	166.84
W-TA-BF	0239967	Twist-handle Drain with 3" Opening, 2" Drain Outlet, and 1-1/4" Overflow	166.84
Lever-Handle Drains			
W-LA-A	0239946	Lever-handle Drain with 3" Opening and 1-1/2" Drain Outlet	166.84
W-LA-BF	0239949	Lever-handle Drain with 3" Opening, 2" Drain Outlet, and 1-1/4" Overflow	166.84
W-LB-AF	0239951	Lever-handle Drain with 3-1/2" opening, 1-1/2" Drain Outlet, and 1-1/4" Overflow	145.31
Drain Replacement Parts			
WRB-FS	0239958	Flat Strainer for 3-1/2" Sink Opening	17.94
WRC-SR	0239962	Neoprene Stopper O-Ring	8.97

Hydro-Force™ Economy Commercial Plumbing Products

Model #	Ordering Code	Description	List Price (ea/ctn.) USD
Wall-Mount Pre-Rinse Assemblies			
LFP-WS8B-R	0239930	Wall-mount Pre-Rinse with Wall Bracket	567.50
LFP-WS8B-AF12-R	0239929	Wall-mount Pre-Rinse with 12" Add-on Faucet and Wall Bracket	717.60
Deck-Mount Pre-Rinse Assemblies			
LFP-DS4B-R	0239905	Deck-mount Pre-Rinse with Wall Bracket	567.50
LFP-DS4B-AF12-R	0239904	Deck-mount Pre-Rinse with 12" Add-on Faucet and Wall Bracket	730.16
Pre-Rinse Add-On Faucets			
LFAF-06-R	0239801	Add-On Faucet with 6" Swivel Spout	150.10
LFAF-08-R	0239803	Add-On Faucet with 8" Swivel Spout	152.49
LFAF-10-R	0239805	Add-On Faucet with 10" Swivel Spout	156.68
LFAF-12-R	0239807	Add-On Faucet with 12" Swivel Spout	160.26
LFAF-14-R	0239809	Add-On Faucet with 14" Swivel Spout	165.65
LFAF-16-R	0239811	Add-On Faucet with 16" Swivel Spout	175.81
Pre-Rinse Spray Heads			
LFPRSH-S-R	68003781	Pre-Rinse Spray Head Assembly	114.22
LFPRSH-A	0239920	Angled Pre-Rinse Spray Head Assembly	147.71
LFPRSH-PF	0239924	Pot Filler Spray Head Assembly	164.45
Pre-Rinse Replacement Hoses			
LFPRH-G44	0239916	44" Pre-Rinse Hose Assembly with Grip	128.57
LFPRH-G60	0239917	60" Pre-Rinse Hose Assembly with Grip	166.84
LFPRH-G72	0239918	72" Pre-Rinse Hose Assembly with Grip	182.39
LFPRH-G96	0239919	96" Pre-Rinse Hose Assembly with Grip	215.28
Wall-Mount Faucets			
LFF-WST8-S08S-R	0239894	Wall-mount Faucet, 8" Adjustable Center with 8" Swivel Spout	243.39
LFF-WST8-S10S-R	0239896	Wall-mount Faucet, 8" Adjustable Center with 10" Swivel Spout	247.57
LFF-WST8-S12S-R	0239898	Wall-mount Faucet, 8" Adjustable Center with 12" Swivel Spout	249.96
LFF-WST8-S14S-R	0239900	Wall-mount Faucet, 8" Adjustable Center with 14" Swivel Spout	254.15
LFF-WST8-G06S-R	0239892	Wall-mount Faucet, 8" Adjustable Center with 6" Gooseneck Swivel Spout	263.12
Deck-Mount Faucets			
LFF-DST4-S08S-R	0239839	Deck-mount Faucet, 4" Adjustable Center with 8" Swivel Spout	282.26
LFF-DST4-S10S-R	0239841	Deck-mount Faucet, 4" Adjustable Center with 10" Swivel Spout	288.24
LFF-DST4-S12S-R	0239843	Deck-mount Faucet, 4" Adjustable Center with 12" Swivel Spout	294.81
LFF-DST4-G06S-R	0239837	Deck-mount Faucet, 4" Adjustable Center with 6" Gooseneck Swivel Spout	297.21
LFF-DST8-S08S-R	0239847	Deck-mount Faucet, 8" Adjustable Center with 8" Swivel Spout	310.36
LFF-DST8-S10S-R	0239849	Deck-mount Faucet, 8" Adjustable Center with 10" Swivel Spout	315.15
LFF-DST8-S12S-R	0239851	Deck-mount Faucet, 8" Adjustable Center with 12" Swivel Spout	319.33
LFF-DST8-G09S-R	0239845	Deck-mount Faucet, 8" Adjustable Center with 9-1/2" Gooseneck Swivel Spout	333.09

Model #	Ordering Code	Description	List Price (ea/ctn.) USD
Double & Single-Pantry Faucets			
LFF-DSP-S06S-R	0239833	Single-Pantry Faucet, with 6" Swivel Spout	185.98
LFF-DSP-S12S-R	0239835	Single-Pantry Faucet, with 12" Swivel Spout	194.95
LFF-DSP-G06S-R	0239829	Single-Pantry Faucet, with 6" Gooseneck Swivel Spout	197.34
LFF-DSP-G09S-R	0239831	Single-Pantry Faucet, with 9-1/2" Gooseneck Swivel Spout	202.72
LFF-DDP-S12S-R	0239827	Double-Pantry Faucet, with 12" Swivel Spout	294.81
LFF-DDP-G06S-R	0239821	Double-Pantry Faucet, with 6" Gooseneck Swivel Spout	297.21
Faucet Bases			
LFFRFB-W8-R	0239861	Wall-mount Faucet base, 8" Center	199.13
LFFRFB-D4-R	0239853	Deck-mount Faucet Base, 4" Center	240.99
LFFRFB-D8-R	0239855	Deck-mount Faucet base, 8" Center	263.12
LFFRFB-BD4-R	0239932	Deck-mount Workboard/Bar Faucet Base, 4" Center	160.26
LFFRFB-BW4-R	0239934	Wall-mount Workboard/Bar Faucet Base, 4" Center	164.45
Faucet Replacement Parts			
LFFRRV-H-C	0239973	Hot and Cold Valve Replacement Kit for Wall-mount Faucets	64.29
LFFRRV-C-R	0239974	Hot and Cold Valve Replacement Kit for Deck-mount Faucets	64.29
Utility Sprays			
LFUS-W8VB-R	0239943	Wall-mount Utility Spray, 8" Adjustable Center, with Vacuum Breaker and 72" Hose	640.46
LFUS-D4VB-R	0239939	Deck-mount Utility Spray, 4" Adjustable Center with Vacuum Breaker and 72" Hose	669.16
Pot Fillers			
LFPF-W8VB-R	0239911	Wall-mount Pot Filler, 8" Adjustable Center with Vacuum Breaker and 72" Hose	705.04
LFPF-D4VB-R	0239907	Deck-mount Pot Filler, 4" Adjustable Center with Vacuum Breaker and 72" Hose	724.18
LFPF-D8VB-R	0239909	Deck-mount Pot Filler, 8" Adjustable Center with Vacuum Breaker and 72" Hose	739.13
Workboard/Bar Sink Faucets			
LFF-WBF4-S06S-R	0239890	Wall-mount Workboard/Bar Faucet, 4" Center with 6" Swivel Spout	199.13
LFF-WBF4-G03S-R	0239884	Wall-mount Workboard/Bar Faucet, 4" Center with 3-1/2" Gooseneck Swivel Spout	201.53
LFF-WBF4-G06S-R	0239886	Wall-mount Workboard/Bar Faucet, 4" Center with 6" Gooseneck Swivel Spout	203.92
LFF-WBF4-G09S-R	0239888	Wall-mount Workboard/Bar Faucet, 4" Center with 9-1/2" Gooseneck Swivel Spout	218.27
LFF-DBF4-S06S-R	0239819	Deck-mount Workboard/Bar Faucet, 4" Center with 6" Swivel Spout	215.28
LFF-DBF4-G03S-R	0239813	Deck-mount Workboard/Bar Faucet, 4" Center with 3-1/2" Gooseneck Swivel Spout	210.50
LFF-DBF4-G06S-R	0239815	Deck-mount Workboard/Bar Faucet, 4" Center with 6" Gooseneck Swivel Spout	214.08
LFF-DBF4-G09S-R	0239817	Deck-mount Workboard/Bar Faucet, 4" Center with 9-1/2" Gooseneck Swivel Spout	228.44

Grease Interceptors

Model #	Ordering Code	Description	Special Order	List Price (ea./ctn.) USD
WD Series Grease Interceptors				
WD-4	8150959	4 GPM, 8 lb capacity, 2" inlet & outlet, deep seal trap, PDI-certified		398.45
WD-7	8150960	7 GPM, 14 lb capacity, 2" inlet & outlet, deep seal trap, PDI-certified		452.63
WD-10	8150961	10 GPM, 20 lb capacity, 2" inlet & outlet, deep seal trap, PDI-certified		558.73
WD-15	8150962	15 GPM, 30 lb capacity, 2" inlet & outlet, deep seal trap, PDI-certified		647.90
WD-20	8150963	20 GPM, 40 lb capacity, 3" inlet & outlet, deep seal trap, PDI-certified		789.00
WD-25	8150964	25 GPM, 50 lb capacity, 3" inlet & outlet, deep seal trap, PDI-certified		1,039.58
WD-35	8150965	35 GPM, 70 lb capacity, 3" inlet & outlet, deep seal trap, PDI-certified		1,353.37
WD-50	8150966	50 GPM, 100 lb capacity, 4" inlet & outlet, deep seal trap, PDI-certified		1,653.62
GI-K Series High-Capacity Grease Interceptors				
GI-75-K	8142012	75 GPM, 150 lb cap, 4" inlet/outlet, double-wall deep seal trap, integral SS flow	✓	3,005.86
GI-100-K	8141970	100 GPM, 200 lb cap, 4" inlet/outlet, double-wall deep seal trap, integral SS flow	✓	4,779.13
GI-150-K	8141976	150 GPM, 300 lb cap, 4" inlet/outlet, double-wall deep seal trap, integral SS flow	✓	7,210.46
GI-200-K	8141981	200 GPM, 400 lb cap, 4" inlet/outlet, double-wall deep seal trap, integral SS flow	✓	9,526.65
GI-250-K	8185196	250 GPM, 500 lb cap, 4" inlet/outlet, double-wall deep seal trap, integral SS flow	✓	11,851.88
GI-300-K	8185587	300 GPM, 600 lb cap, 4" inlet/outlet, double-wall deep seal trap, integral SS flow	✓	13,009.97
GI-400-K	8186246	400 GPM, 800 lb cap, 4" inlet/outlet, double-wall deep seal trap, integral SS flow	✓	15,154.60
GI-500-K	8185903	500 GPM, 1000 lb cap, 4" inlet/outlet, double-wall deep seal trap, integral SS flow	✓	17,610.76
WD-L Series Low-Profile Grease Interceptors				
WD-20-L	8151237	20 GPM, 40 lb capacity, 3" inlet & outlet, deep seal trap, PDI-certified		1,290.12
WD-35-L	8151746	35 GPM, 70 lb capacity, 4" inlet & outlet, deep seal trap, PDI-certified		2,123.59
WD-50-L	8100892	50 GPM, 100 lb capacity, 4" inlet & outlet, deep seal trap.	✓	2,316.20
WD-A Semi-Automatic Series Grease Interceptors				
WD-10-A	8186041	10 GPM, 20 lb cap, 2" inlet/outlet, deep seal trap, internal SS flow, threaded connector	✓	2,011.43
WD-15-A	8185878	15 GPM, 30 lb cap, 2" inlet/outlet, deep seal trap, internal SS flow, threaded connector	✓	1,952.74
WD-20-A	8185818	20 GPM, 40 lb cap, 3" inlet/outlet, deep seal trap, internal SS flow, threaded connector	✓	4,052.21
WD-25-A	8185821	25 GPM, 50 lb cap, 3" inlet/outlet, deep seal trap, internal SS flow, threaded connector	✓	4,454.05
WD-35-A	8185828	35 GPM, 70 lb cap, 3" inlet/outlet, deep seal trap, internal SS flow, threaded connector	✓	5,135.81
WD-50-A	8186078	50 GPM, 100 lb cap, 4" inlet/outlet, deep seal trap, internal SS flow, threaded connector	✓	6,508.37
WD-75-A	8186016	75 GPM, 150 lb cap, 4" inlet/outlet, deep seal trap, internal SS flow, threaded connector	✓	7,769.19
Grease Interceptor Extensions and Gasket Material				
20WD-12EXT	8151031	12" Extension for WD-20 Grease Interceptor		705.51
25WD-10EXT	8185385	12" Extension for WD-25 Grease Interceptor		895.69
35WD-6EXT	8151041	6" Extension for WD-35 Grease Interceptor		692.60
35WD-12EXT	8151043	12" Extension for WD-35 Grease Interceptor		1,217.33
50WD-6EXT	8151047	6" Extension for WD-50 Grease Interceptor		613.95
50WD-10EXT	8185455	10" Extension for WD-50 Grease Interceptor		942.65
50WD-13EXT	8185268	13" Extension for WD-50 Grease Interceptor		976.68
75K-6EXT	8100352	6" Extension for GI-75-K Grease Interceptor		909.77
75K-10EXT	8185456	10" Extension for GI-75-K Grease Interceptor		941.46
100K-10EXT	8185456	10" Extension for GI-100-K Grease Interceptor		941.46
100K-12EXT	8189350	12" Extension for GI-100-K Grease Interceptor		941.38
150K-10EXT	8185456	10" Extension for GI-150-K Grease Interceptor		941.46
WD-GASKET	8188917	25' Roll Gasket Material		116.22

Note: For optional Threaded Connector (WD, WD-L, Series), add THD to part number. No additional cost.

Additional sizes of grease interceptor extensions available. Also, some Grease Interceptor extensions are Special Order.

(Grease interceptor order value must be \$2,500 or greater to qualify for free shipping. Cannot be combined with other

Dormont products for purposes of qualifying for free shipping)

NOTES



USA: Tel: (800) 367-6668 • Fax: (724) 733-4808 • Foodservice.Watts.com
Latin America: Tel: (52) 81-1001-8600 • Foodservice.Watts.com