

Delivering the future through
innovative technology.



Introduction

- ❖ Established in 1995
- ❖ Located in Wilmington, NC with a 40,000 Sqft facility.
- ❖ Specializes in the design and manufacturing of connection solutions.
- ❖ Introduced a high performance, quick connect, water plumbing system in 1997.
- ❖ Currently supplies water systems to over 50% of the world marine market.
- ❖ Pioneered the innovation of manifold water plumbing.
- ❖ Only company in the world to offer quick connect fitting and manifold technology in both metric and standard inch sizes.

Features

Easy to use

- ◆ Only tool required is a standard tubing cutter.
- ◆ Lowest tubing insertion force helps eliminate "short connections".
- ◆ No collet clips required, fittings do not disconnect accidentally.

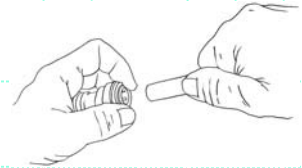
Cut tube with any standard cutter.



Push the tubing in until it hits internal tube stop.



To disconnect simply hold in on collet and pull tube out.



Superior fitting design

Sea Tech's new O-Ring Guide improves reliability by:

- Protecting the O-ring from damage.
- Increases the fittings side load capacity.
- Prevents the O-ring from becoming dislodged.
- Eliminates leaks where fittings are close to tight bends.



Rotates while pressurized



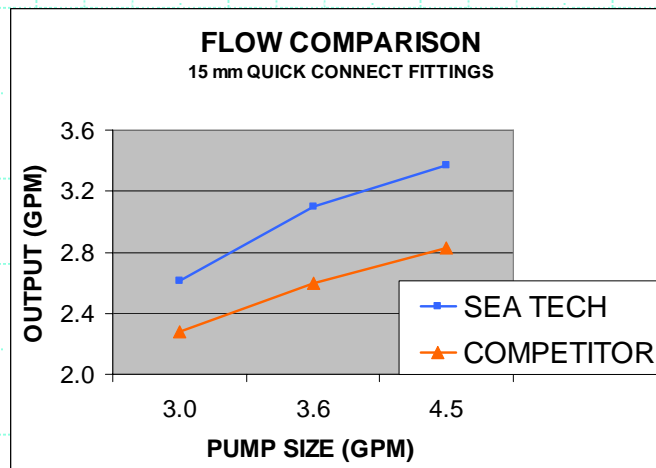
Because of the fittings ability to rotate, Sea Tech's fittings are ideal for mobile applications.

- Vibration and shock will not cause a fitting to leak.
- Unique design allows fitting to expand and contract with temperature changes.
- Tubing can be routed more easily because fittings swivel.

Offers more water flow & less pressure loss

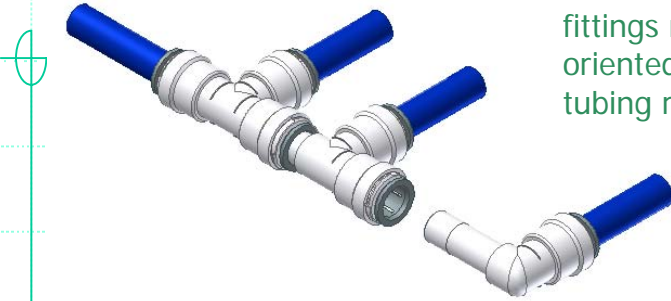
Sea Tech fittings out perform all others by:

- Increased water flow capacity.
- The tubing is typically the smallest restrictor.
- With Sea Tech fittings customers can use one pump size smaller for greater efficiency and cost savings!
- End users enjoy greater water pressure and flow.



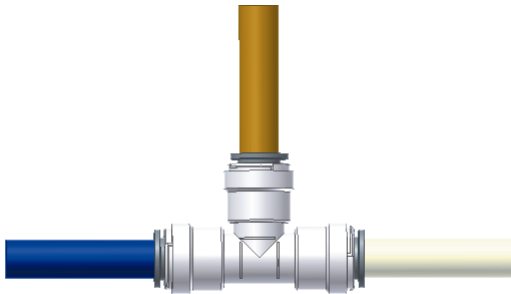
Create mini-manifolds with stackable fittings

With Sea Tech fittings small lengths of tubing can be eliminated by using our stackable connectors. Simply snap together Tees and or Elbows to create a mini-manifold of fittings. Because Sea Tech fittings rotate the direction of the tubing can be oriented by a simple twist, reducing the amount of tubing required to install a water system.



Connect to multiple materials

Sea Tech fittings incorporate stainless steel gripping teeth in its collet. These corrosion resistant teeth allow Sea Tech fittings to interconnect with multiple materials without the need for special tools.



- Copper
- CPVC
- PEX, LDPE, MDPE, @ HDPE tubing

No thread sealant needed



Sea Tech fittings utilize a swivel nut with NPS straight threads and a cone seal. This allows the installer to thread onto NPT, NPS, BSP, and most 1/2" male threads without tools or thread sealant. Simply thread on, hand tight, for a zero leak seal.

Sea Tech offers more fitting styles



Complete product range of ½" size fittings.

- Metric size fittings and manifolds are black in color
- Inch size fittings and manifolds are white in color.



The most complete range of metric fittings in the market.

Extensive Tubing Selection

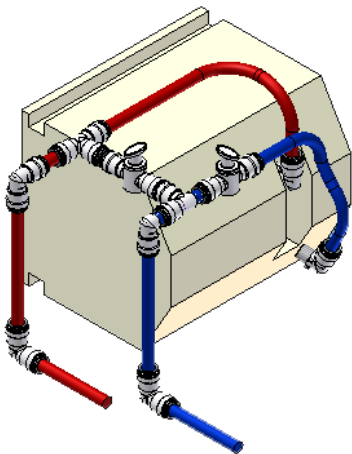


Tubing is available in red, white, blue, and green.

Sea Tech tubing is produced from a high performance, polyethylene material. Sea Tech tubing is formulated in manufactured in 15mm, 22mm, 28mm and ½" (CTS) sizes. Sea Tech tubing is NSF listed, FDA recognized and available in red, white, blue, and green colors. Tubing is available packaged in coils or straight lengths.

- Available in Metric and Inch size tubing.
- Packaged in Coils and Straight Lengths.
- Red, White, Blue, and Green colors available

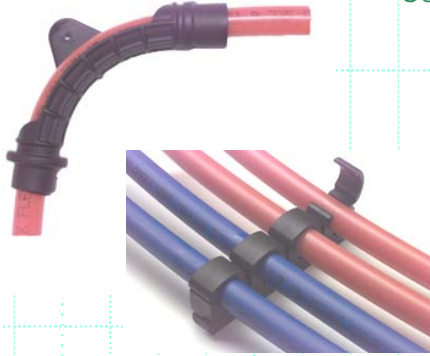
High Performance Fittings



Sea Tech fittings, tubing, and manifolds are rated for 180° F @ 100psi.

- Highest performance in the market.
- Users can connect water plumbing directly to the water heater (no special hose, or reducing valves required).
- Extra high performance assures customers a reliable system long into the future.

Unique Installation solutions



Sea Tech's mounting clips reduce cost.

- External elbows reduce the cost of a standard elbow.
- External elbows increase flow capacity and reduce leak points.
- Tubing clips secure the tubing and can be "Lego locked" together for quicker installation.

Manifolds eliminate fittings



Sea Tech's new modular manifold reduces cost and increases performance.

- Manifold sections are available sold individually or in pre-assembled manifolds.
- Connect directly to the manifold and fixture and eliminate all fittings in between.
- Manifolds increase water flow and reduce pressure loss.
- Individual shut-off valves allow for the user to turn a problem area off without shutting down the entire water system

Standards, Warranty, and Compliance



Sea Tech fittings are produced from FDA approved materials.



NSF-61 Certification, Sea Tech fittings are certified and tested for contact with drinking water.

ABYC

Sea Tech fittings meet or exceed all ABYC hull piping standards.