

Backflow Irrigation Control Station

BIC Series



Features

- Master stainless steel automatic control valve and backflow assembly combined on stainless steel or brass station
- Preload pilot, high-pressure lockout switch, and modular design for easy component replacement

For more information visit Watts.com or call your local representative.

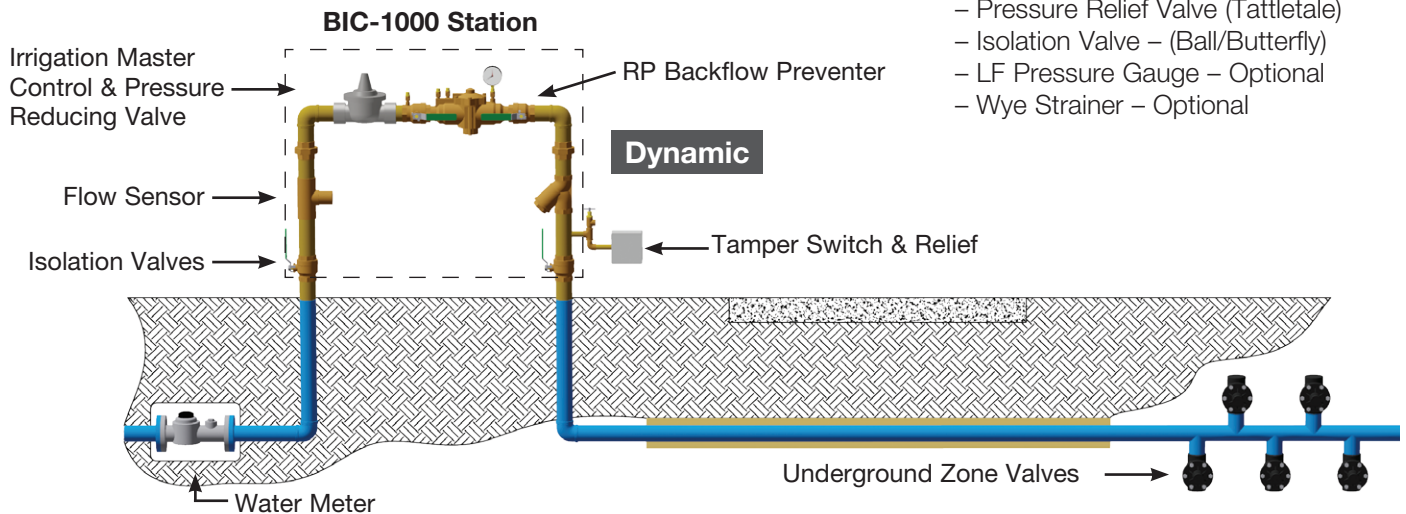
Benefits

- Conserves water and lowers water bill
- Tamper switch – Protects against over-pressurization damage
- Relief valve – Visual indication of over-pressurization
- Master valve offers multiple set points, eliminates operator adjustment
- Preloaded low pressure and flow line eliminates hammer
- Reduces wear and tear on all irrigation components
- Provides 100% backflow prevention
- Safety components above ground – Ease of inspection and maintenance
- Ability to lower pressure to 32-35 psig
- Higher flow for same coverage area

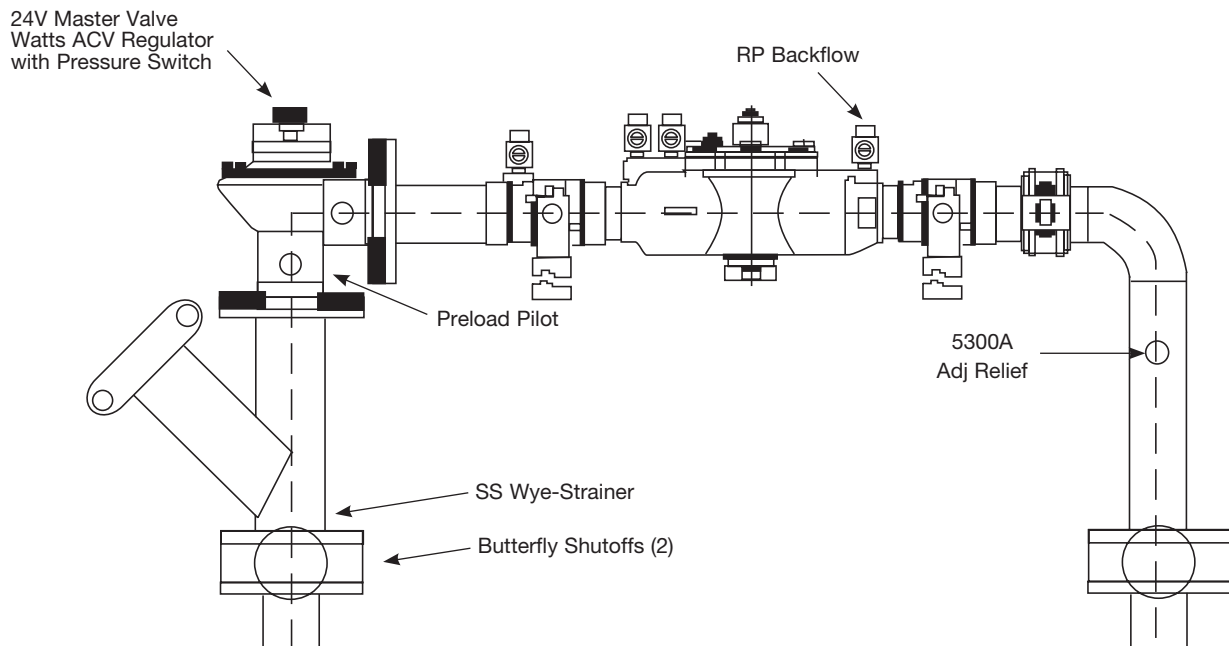
Backflow Irrigation Control Station

BIC-1000 Includes:

- Flow Sensor
- Irrigation Master Control & Pressure Reduction (Automatic Control Valve)
- Backflow Preventer (RP Type)
- Tamper-proof Pressure Switch
- Pressure Relief Valve (Tattletale)
- Isolation Valve - (Ball/Butterfly)
- LF Pressure Gauge - Optional
- Wye Strainer - Optional



Typical Installation



A WATTS Brand

USA: T: (978) 689-6066 • F: (978) 975-8350 • Watts.com
 Canada: T: (905) 332-4090 • F: (905) 332-7068 • Watts.ca
 Latin America: T: (52) 81-1001-8600 • Watts.com