

CLX-Ex OnLine TRO and Chlorine Monitor

For Hazardous Environments

The HF scientific CLX-Ex OnLine TRO and Chlorine Monitor is a rugged, safe, and low maintenance instrument for shipboard ballast water treatments systems that require continuous monitoring and control of Total Residual Oxidant (TRO) levels in hazardous environments. User selectable cycle times, 4-20mA and RS-485 with Modbus output that can be used to control feed pumps and a user selectable alarm allows complete manual or automatic control of chlorine dosing.



Available! High Range Option

Standard Features

- **Optimized for marine applications**
- **Use in atmospheres where combustible fuel vapors may be present**
Housing certified for IECEx and Zone 1 and Zone 2
- **Total chlorine**
Can be used for Total Chlorine and TRO measurements
- **Able to operate in ambient temperatures up to 55°C**
- **Low operating costs**
Low reagent use translates into low operating cost
- **Simple operation**
Designed for unattended operation up to 90 days
- **Colorimetric DPD chemistry**
- **Cycle times**
Cycle times can vary between 60 seconds to 10 minutes.
- **Alarms**
User selectable alarm for sample concentration
- **Ballast water treatment, Drinking water, and Wastewater**
- **4-20mA and RS-485 with Modbus**
- **Available - High range to 15 mg/l (option) \pm 10% accuracy**



Ordering Information

CATALOG NO.	DESCRIPTION
A28031	CLX-Ex OnLine Chlorine Residual Monitor 240VAC for Total Chlorine complete with operating manual. Reagents must be purchased separately.

Accessories

09950	Replacement tubing/cuvette kit
28895	High Range Option. 0-15 mg/l

Specifications

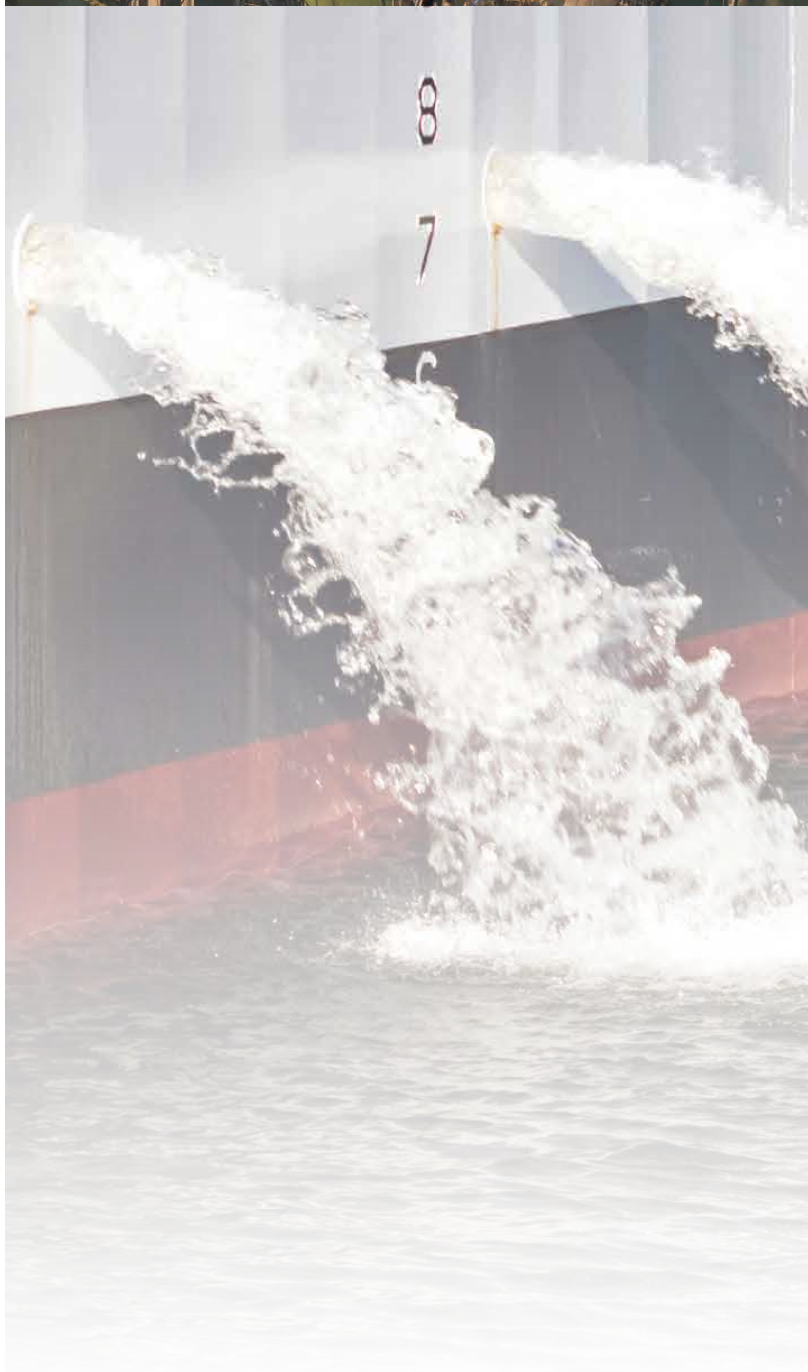
Range:	0 - 10 mg/l
Cycle Time:	User Selectable: 60 seconds - 10 minutes. Other cycle times available. Consult factory.
Accuracy:	0 - 6 mg/l - $\pm 5\%$ or 0.03 mg/l of Cl ₂ whichever is greater, 6 - 10 mg/l - $\pm 10\%$. High Range option 0-15 mg/l, $\pm 10\%$
Resolution:	0.01 mg/l
Method:	USEPA accepted DPD method of analysis for measuring Total Residual Chlorine
Standard Outputs:	4-20 mA and RS-485 with Modbus
User Alarm:	User selectable alarm for sample concentration
Operating Temperature:	0° - 55°C (32° to 131°F)
Sample Pressure:	0.3 bar - 10.3 bar (5 - 150psi)
Compressed Air Pressure:	5.5 - 7 bar (80 - 101.5 psi)
Enclosure:	IP56
Power:	240 VAC (100 to 240VAC), 47-63 Hz, 250VA
Certifications:	CE, ETL to UL & CSA, IECEx, DNVGL, KR
Flow Rate to Waste:	200-400ml / min
Shipping Dimensions	558mm X 662 mm X 400 mm (22" x 24 1/2" x 15 3/4")
Shipping Weight:	27.2 kg (60 lbs)
Actual Weight	26.3 kg (58 lbs.)
Dimensions	93cm X 62cm X 32cm (36.5" X24.5" X 12.5")

Specifications subject to change without notice.

Reagent Kits

	CATALOG NO.
Total Chlorine reagent for CLX-EX 12 month supply	09991

(based on estimated BWTS operational cycles)



A WATTS Brand

USA: T: (239) 337-2116 • Toll-Free (888) 203-7248 • F: (239) 332-7643 • HFscientific.com
 Latin America: T: (52) 81-1001-8600 • F: (52) 81-8000-7091 • HFscientific.com