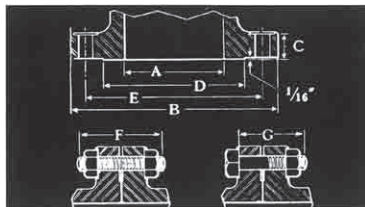


Templates For Drilling

150, 300 and 600 Pound Steel Standards

FACING: Unless otherwise ordered, 150 and 300 Pound Steel Flanged Strainers are regularly furnished with a 1/16-inch high raised face.

The thickness of flange dimension (dimension "C") includes the 1/16 inch high raised face.



150 and 300 Pound

F = Length of stud G = Length of machine bolt

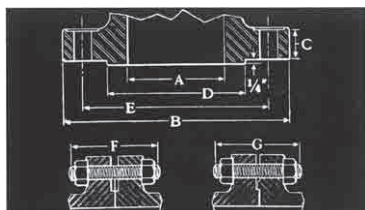
BOLT HOLES: Bolt holes are drilled 1/8 inch larger than the diameter of the bolt.

Drilling templates are in multiples of four, so that valves or fittings may be turned to face in any quarter when installed. Bolt holes are drilled to straddle the center-line unless otherwise ordered.

The bolt holes are spot faced.

BOLT AND BOLT - STUD LENGTHS: The lengths indicated as dimensions F and G in the above table apply for flanged joints made up of combinations of 150-Pound or 300-Pound valves, fittings, or companion flanges with 1/16 inch high raised faces.

Bolt-Stud Length "G" also applies for Tongue to Groove Flanged Joint.



600 Pound

F = Male to Male Flanged Joint
G = Male to Female Flanged Joint

FACING: 600-Pound Steel Strainers are regularly furnished with 1/4 inch high large male face. The thickness of flange dimension (dimension "C") does not include the 1/4 inch high large male face.

SPOT FACING: The bolt holes are spot faced.

BOLT HOLES: Bolt holes are drilled 1/8 inch larger than the diameter of the bolt.

CLASS	SIZE	A	B	C	D	E	NO. OF BOLTS OR BOLTSTUDS	DIA. OF BOLTS OR BOLTSTUDS	F	G
150 LB.	1/2	1/2	3 1/2	7/16	1 3/8	2 3/8	4	1/2	2 1/4	1 3/4
	3/4	3/4	3 3/8	7/16	1 11/16	2 3/4	4	1/2	2 1/4	2
	1	1	4 1/4	7/16	2	3 1/8	4	1/2	2 1/2	2
	1 1/4	1 1/4	4 5/8	1/2	2 1/2	3 1/2	4	1/2	2 1/2	2 1/4
	1 1/2	1 1/2	5	9/16	2 7/8	3 3/8	4	1/2	2 1/2	2 1/4
	2	2	6	5/8	3 3/8	4 3/4	4	5/8	3 1/4	2 1/2
	2 1/2	2 1/2	7	11/16	4 1/8	5 1/2	4	5/8	3 1/2	2 3/4
	3	3	7 1/2	3/4	5	6	4	5/8	3 1/2	3
	3 1/2	3 1/2	8 1/2	13/16	5 1/2	7	8	5/8	3 1/2	3
	4	4	9	15/16	6 3/16	7 1/2	8	5/8	3 1/2	3
	5	5	10	15/16	7 3/16	8 1/2	8	3/4	3 3/4	3
	6	6	11	1	8 1/2	9 1/2	8	3/4	4	3 1/4
	8	8	13 1/2	1 1/8	10 5/8	11 3/4	8	3/4	4 1/4	3 1/2
	10	10	16	1 3/16	12 3/4	14 1/4	12	7/8	4 3/4	3 3/4
	12	12	19	1 1/4	15	17	12	7/8	4 3/4	3 3/4
	14	13 1/4	21	1 3/8	16 1/4	18 3/4	12	1	5 1/4	4 1/4
	16	15 1/4	23 1/2	1 7/8	18 1/2	21 1/4	16	1	5 1/2	4 1/2
	18	17 1/4	25	1 3/8	21	22 3/4	16	1 1/8	6	4 3/4
	20	19 1/4	27 1/2	1 11/16	23	25	20	1 1/8	6 1/4	5
	24	23 1/4	32	1 7/8	27 1/4	29 1/2	20	1 1/4	7	5 1/2
300 LB.	1/2	1/2	3 3/4	9/16	1 3/8	2 5/8	4	1/2	2 1/2	2
	3/4	3/4	4 5/8	5/8	1 11/16	3 1/4	4	5/8	3	2 1/4
	1	1	4 7/8	11/16	2	3 1/2	4	5/8	3	2 1/2
	1 1/4	1 1/4	5 1/4	3/4	2 1/2	3 3/8	4	5/8	3 1/4	2 1/2
	1 1/2	1 1/2	6 1/8	13/16	2 7/8	4 1/2	4	3/4	3 1/2	2 3/4
	2	2	6 1/2	7/8	3 3/8	5	8	5/8	3 1/2	2 3/4
	2 1/2	2 1/2	7 1/2	1	4 1/8	5 7/8	8	3/4	4	3 1/4
	3	3	8 1/4	1 1/8	5	6 5/8	8	3/4	4 1/4	3 1/2
	3 1/2	3 1/2	9	1 3/16	5 1/2	7 1/4	8	3/4	4 1/4	3 1/2
	4	4	10	1 1/4	6 3/16	7 7/8	8	3/4	4 1/2	3 3/4
	5	5	11	1 3/8	7 3/16	9 1/4	8	3/4	4 3/4	4
	6	6	12 1/2	1 7/8	8 1/2	10 5/8	12	3/4	4 3/4	4
	8	8	15	1 3/8	10 5/8	13	12	7/8	5 1/2	4 1/2
	10	10	17 1/2	1 7/8	12 3/4	15 1/4	16	1	6 1/4	5 1/4
	12	12	20 1/2	2	15	17 3/4	16	1 1/8	6 3/4	5 1/2
	14	13 1/4	23	2 1/8	16 1/4	20 1/4	20	1 1/8	7	6
	16	15 1/4	25 1/2	2 1/4	18 1/2	22 1/2	20	1 1/4	7 1/2	6 1/4
	18	17	28	2 3/8	21	24 3/4	24	1 1/4	7 3/4	6 1/2
	20	19	30 1/2	2 1/2	23	27	24	1 1/4	8 1/4	6 3/4
	24	23	36	2 3/4	27 1/4	32	24	1 1/2	9 1/4	7 3/4
600 LB.	1/2	1/2	3 3/4	9/16	1 3/8	2 5/8	4	1/2	3	2 3/4
	3/4	3/4	4 5/8	5/8	1 11/16	3 1/4	4	5/8	3 1/2	3 1/4
	1	1	4 7/8	11/16	2	3 1/2	4	5/8	3 1/2	3 1/4
	1 1/4	1 1/4	5 1/4	13/16	2 1/2	3 3/8	4	5/8	3 3/4	3 1/2
	1 1/2	1 1/2	6 1/8	7/8	2 7/8	4 1/2	4	3/4	4 1/4	4
	2	2	6 1/2	1	3 3/8	5	8	5/8	4 1/4	4
	2 1/2	2 1/2	7 1/2	1 1/8	4 1/8	5 7/8	8	3/4	4 3/4	4 1/2
	3	3	8 1/4	1 1/4	5	6 5/8	8	3/4	5	4 3/4
	3 1/2	3 1/2	9	1 1/8	5 1/2	7 1/4	8	7/8	5 3/4	5 1/2
	4	4	10 3/4	1 1/2	6 3/16	8 1/2	8	7/8	5 3/4	5 1/2
	5	5	13	1 3/4	7 3/16	10 1/2	8	1	6 1/2	6 1/4
	6	6	14	1 3/8	8 1/2	11 1/2	12	1	6 3/4	6 1/2
	8	7 7/8	16 1/2	2 3/16	10 5/8	13 3/4	12	1 1/8	7 3/4	7 1/2
	10	9 3/4	20	2 1/2	12 3/4	17	16	1 1/4	8 1/2	8 1/4
	12	11 3/4	22	2 5/8	15	19 1/4	20	1 1/4	8 3/4	8 1/2
	14	12 7/8	23 3/4	2 3/4	16 1/4	20 3/4	20	1 3/8	9 1/4	9
	16	14 3/4	27	3	18 1/2	23 3/4	20	1 1/2	10	9 3/4
	18	16 1/2	29 1/4	3 1/4	21	25 3/4	20	1 5/8	10 3/4	10 1/2
	20	18 1/4	32	3 1/2	23	28 1/2	24	1 5/8	11 1/2	11 1/4
	24	22	37	4	27 1/4	33	24	1 7/8	13	12 3/4

Dimensions in inches. 400 lb., 900 lb., 1500 lb., and 2500 lb. measurements on application.

