

## CLX-XT Extended Reagent Life OnLine Chlorine and TRO Monitor

The HF scientific CLX-XT Extended Reagent Life OnLine Chlorine and TRO Monitor is an economical and low maintenance instrument for shipboard ballast water, potable water or wastewater applications that require continuous monitoring and control of Total Chlorine or Total Residual Oxidant (TRO) levels. This marine grade monitor allows for up to 90 days of unattended operation. User selectable cycle times, 4-20mA and RS-485 with Modbus output that can be used to control feed pumps and user selectable alarms allow complete manual or automatic control of dosing. The instrument is housed in a strong, shatterproof IP66 (except fan IP54) case with easy access to all service functions and reagents.



### Standard Features

**High range to  
15mg/l (option)**



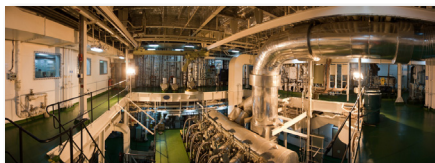
- **Optimized for high temperature marine applications**
- **Use in areas of high ambient temperatures up to 55°C**
- **Total chlorine**  
Can be used for Total Residual Chlorine and Total Residual Oxidant (TRO) measurements
- **Low operating costs**  
Cooling effect can extend reagent life to 3 months (depending on cycle time)
- **Simple operation**  
Designed for unattended operation up to 90 days (depending on cycle time)
- **Colorimetric DPD chemistry**
- **Cycle times**  
Cycle times can vary between 110 seconds to 10 minutes (optional 60 seconds to 10 minutes) Other cycle times available up to 3600 seconds (1 Hour). Consult Factory.
- **Alarms**  
Two user selectable alarms for sample concentration
- **Ballast Water Treatment, Drinking Water, Wastewater and More**
- **4-20mA and RS-485 with Modbus**
- **Certified to:**  
Lloyds Register Test Specification for Vibration and 22 Degree Tilt Test  
En 60954: 2002 Section 8.2, 8.4, 8.7, Specification test No1: Section 14
- **NEW! - High range to 15 mg/l (option) ± 10% accuracy**

### Ordering Information

Cat. No.	Description
28030	CLX-XT Extended Reagent Life OnLine Total Residual Chlorine complete with operating manual. Reagents must be purchased separately. If the application combines high humidity with cold sample water, purchase a #09944 (desiccant cartridge) separately.

### Accessories / Options

28040	Replacement tubing/cuvette kit
28895	High Range Option. 0-15 mg/l
28896	60 second to 10 minute cycle time
25264	Remote standby
25279	Auto drain



### Specifications

Range:	0 - 10 mg/l. 0-15 mg/l available.
Cycle Time:	User selectable: 110 seconds - 10 minutes Optional: 60 seconds - 10 minutes. Other cycle times available up to 3600 seconds (1 Hour). Consult Factory.
Accuracy:	0 - 6 mg/l - ±5% or 0.03 mg/l of Cl <sub>2</sub> whichever is greater 6 - 10 mg/l - ±10%. High Range option 0-15 mg/l, ±10%
Resolution:	0.01 mg/l
Method:	USEPA accepted DPD method of analysis for measuring Total Residual Chlorine
Standard Outputs:	4-20 mA and RS-485 with Modbus
User Alarms:	2 user selectable alarms for sample concentration
Operating Temperature:	0° - 55°C (32° to 131°F)
Input Pressure:	0.3 bar - 10.3 bar (5 - 150psi)
Enclosure:	IP66 (except fan IP54)
Power:	100 - 240 VAC Auto Switchable 47-63hz
Certifications*:	CE, UL, CSA, (ETL, ETLc)
Flow Rate to Waste:	200-400 ml/min
Shipping Dimensions	52mm X 52 mm X 33 mm (20 1/2" X 20 1/2" X 13")
Shipping Weight:	11.8 kg (26lbs.) Reagents are Shipped Separately
Actual Weight:	9.5 kg (21lbs.)
Dimensions:	15.7" x 18.3" x 8.5" (40cm x 46.5cm x 21.6cm)

Specifications subject to change without notice.

### Reagent Kit

Cat. No.

Total Chlorine reagent for CLX-XT 12 month supply	09991
---	-------

(based on estimated BWTS operational cycles)



CLX-XT with door open