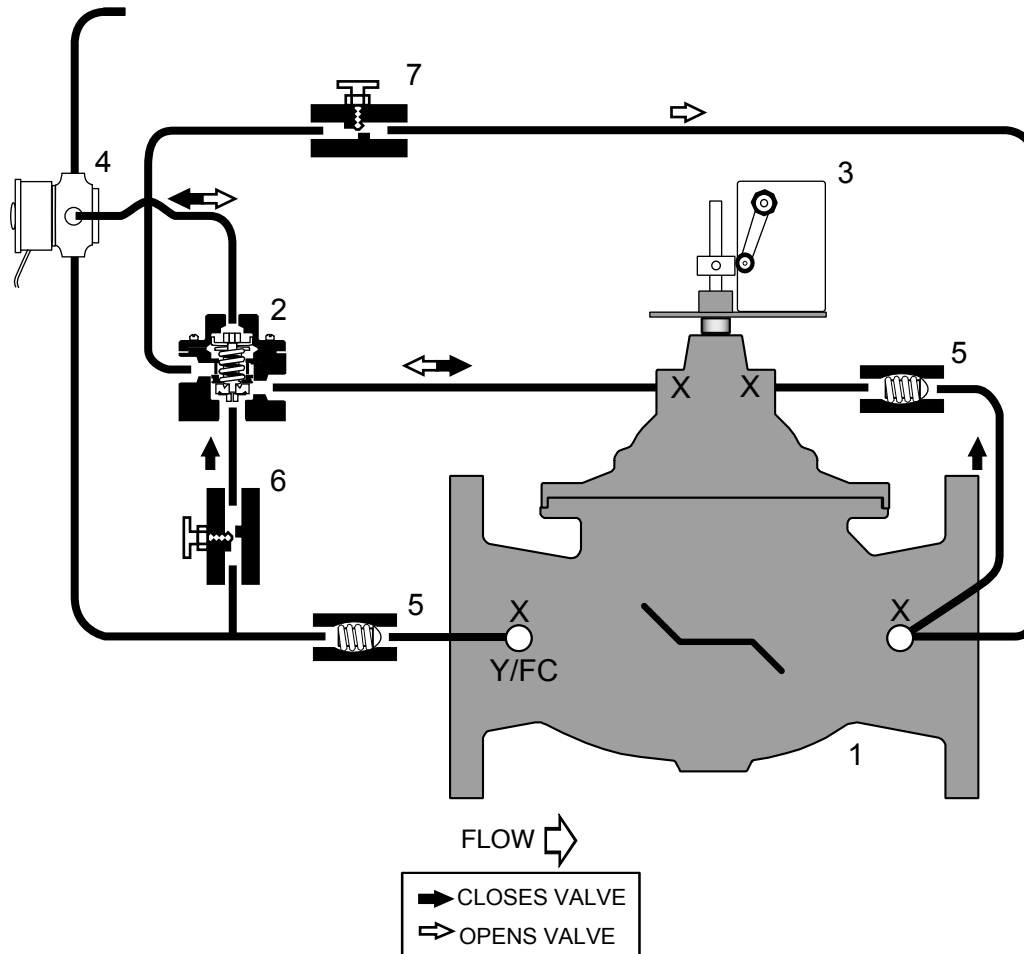


Classic Series

F113-21 (Globe)
F1113-21 (Angle)

- Opens at adjustable rate on pump start-up
- Closes at adjustable rate on pump shut-off
- Limit Switch turns pump off when valve closes
- Hydraulic Check Feature prevents flow reversal
- Solenoid equipped with Manual Operator



STANDARD COMPONENTS

- 1 - Main Valve (Single Chamber)
- 2 - Fig. 22-1 Accelerator Control
- 3 - Limit Switch
- 4 - 3-Way Solenoid
- 5 - Check Valve
- 6 - Adjustable Closing Speed
- 7 - Adjustable Opening Speed

OPTIONS and ACCESSORIES

- X - Isolation Cocks (STANDARD)
- FC - Flo-Clean Strainer (OPTIONAL)
- Y - Y-Strainer (STANDARD)
- L - Dual Limit Switch