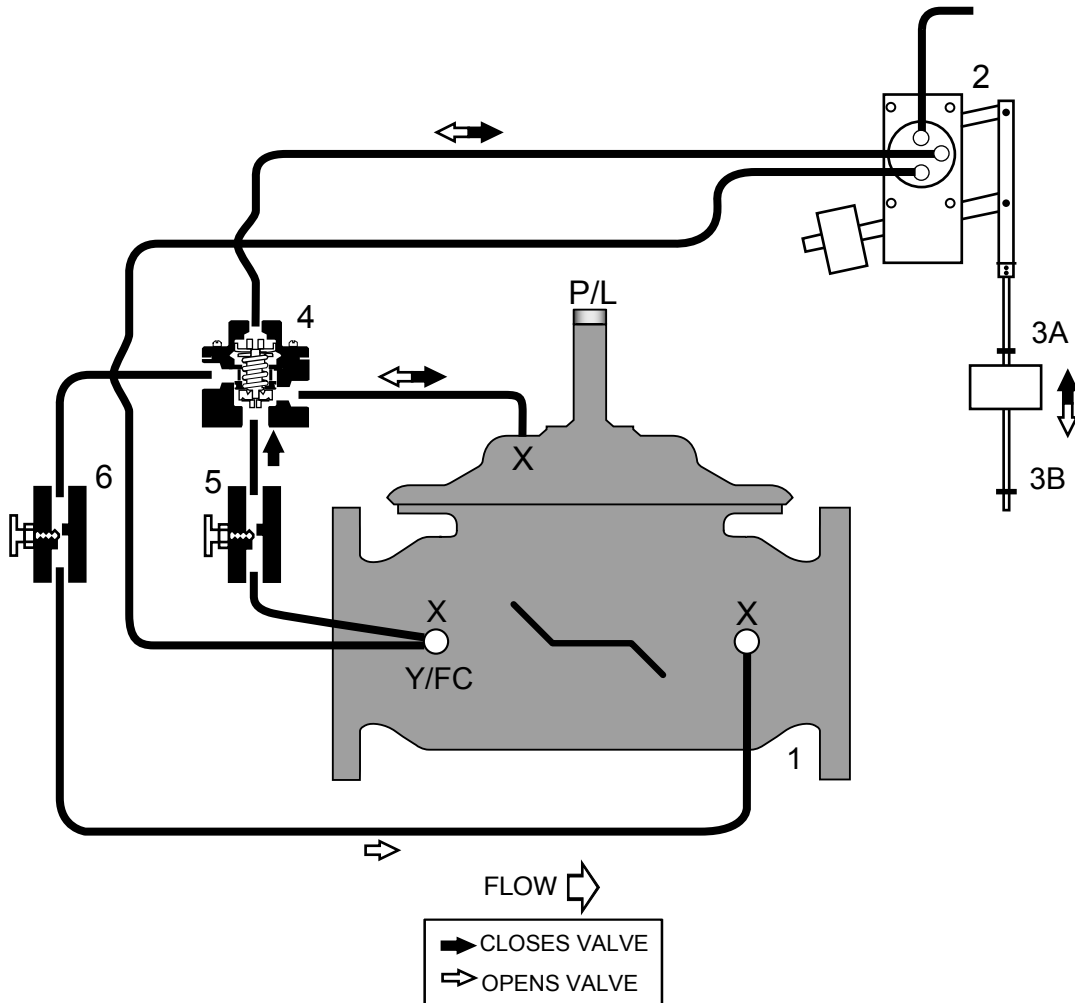


Stainless Series

S110-14 or S6110-14 (Globe)
S1110-14 or S61110-14 (Angle)

- Opens when float reaches low level stop
- Closes when float reaches high level stop
- Adjustable Opening and Closing Speed
- Low and High Level stop collars are adjustable



STANDARD COMPONENTS

- 1 - Main Valve (Single Chamber)
- 2 - On-Off Float Control
- 3A - High Level Adjustment Stop
- 3B - Low Level Adjustment Stop
- 4 - Fig. 22-1 Accelerator Control
- 5 - Adjustable Closing Speed
- 6 - Adjustable Opening Speed

OPTIONS and ACCESSORIES

- X - Isolation Cocks (STANDARD)
- FC - Flo-Clean Strainer (OPTIONAL)
- Y - Y-Strainer (Replaces Flo-Clean) (STANDARD)
- P - Position Indicator
- L - Limit Switch