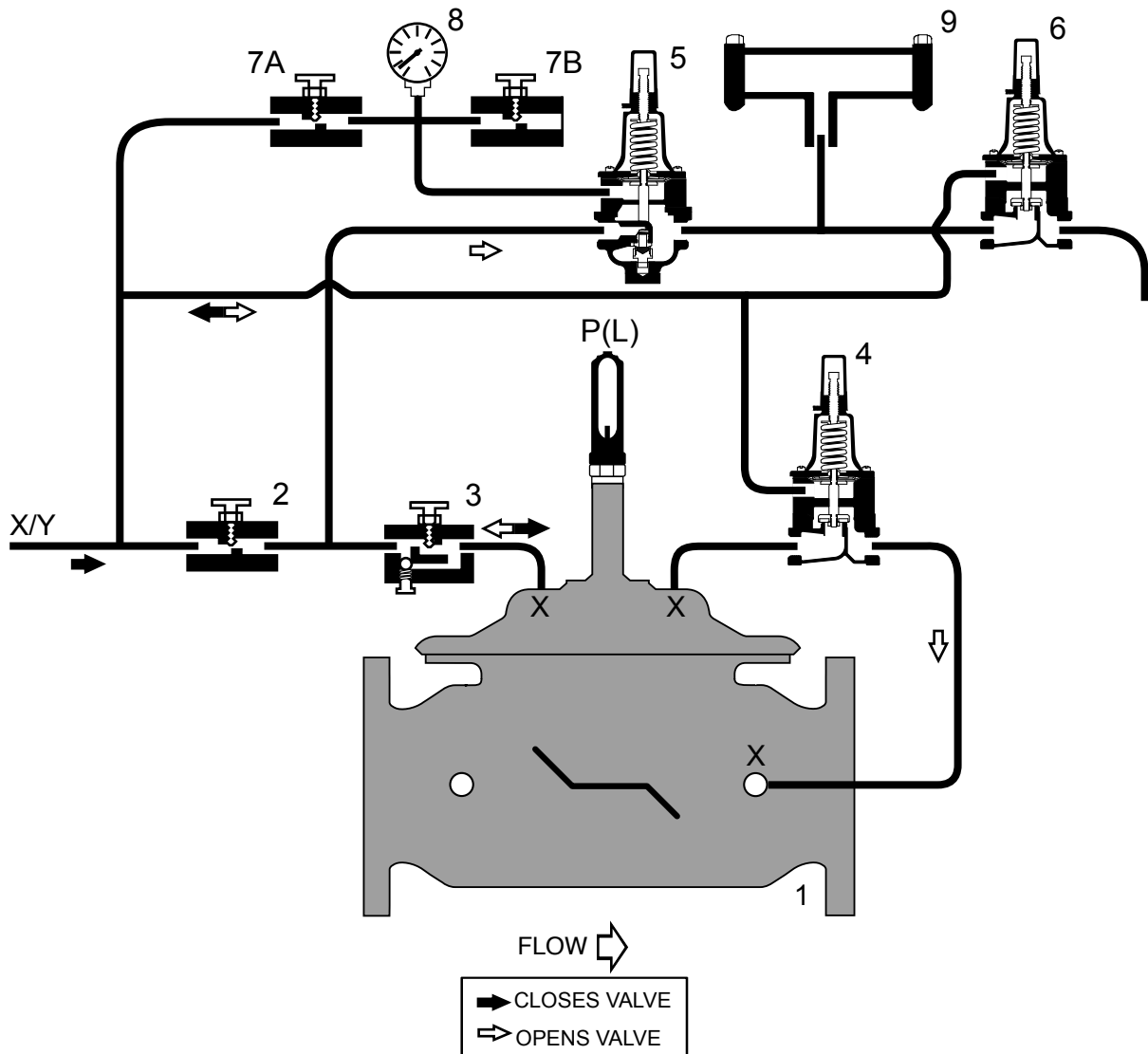


Stainless Series

S116-52 or S6116-52 (Globe)
S1116-52 or S61116-52 (Angle)

- Installed on branch of tee off main pumping header
- Opens when header pressure is above high pressure setpoint (pressure relief)
- Closes when pump header pressure is below high pressure setpoint (pressure relief)
- Opens when pump header pressure is below low pressure setpoint (surge anticipation)
- Hydraulic Accumulator System prevents system siphoning
- Pilot System Sense Line is field installed
- Adjustable Opening and Closing Speed
- High and Low Pressure Setpoints are separately adjustable



STANDARD COMPONENTS

- | | |
|---------------------------------|-----------------------------|
| 1 - Main Valve (Single Chamber) | 6 - Accumulator Drain Valve |
| 2 - Adjustable Closing Speed | 7 - Test Valves |
| 3 - Adjustable Opening Speed | 8 - Pressure Gauge |
| 4 - Pressure Relief Control | 9 - Hydraulic Accumulator |
| 5 - Low Pressure Control | P - Position Indicator |

OPTIONS and ACCESSORIES

- X - Isolation Cocks
- L - Limit Switch