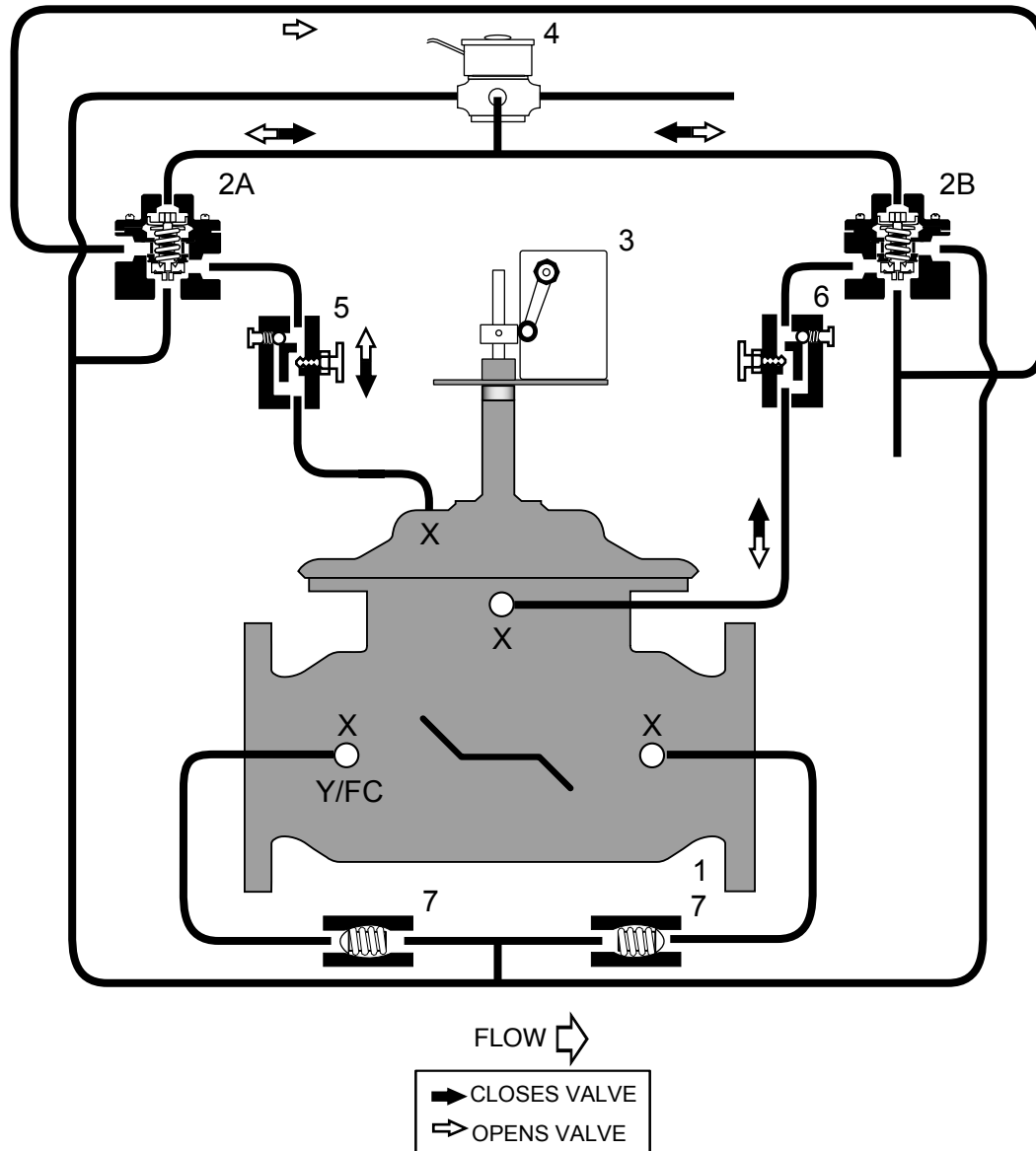


Stainless Series

S513-AK or S6513-AK (Globe)
S1513-AK or S61513-AK (Angle)

- Opens at adjustable rate on pump start-up
- Closes at adjustable rate on pump shut-off
- Limit Switch turns pump off when valve closes
- Built-in Mechanical Lift-Check Feature prevents flow reversal
- Solenoid equipped with Manual Operator



STANDARD COMPONENTS

- 1 - Main Valve (Dual Chamber w/ Lift-Check)
- 2A - Fig. 22-1 Accelerator Control
- 2B - Fig. 22-1 Accelerator Control
- 3 - Limit Switch
- 4 - 3-Way Solenoid
- 5 - Adjustable Opening Speed
- 6 - Adjustable Closing Speed
- 7 - Check Valve

OPTIONS and ACCESSORIES

- X - Isolation Cocks (STANDARD)
- FC - Flo-Clean Strainer (OPTIONAL)
- Y - Y-Strainer (STANDARD)
- L - Dual Limit Switch