

SECTION 16

Drinking Water Components



WATER QUALITY PRODUCTS
Catalog 10

Watts product specifications in U.S. customary units and metric are approximate and are provided for reference only. Watts reserves the right to change or modify product design, construction, specifications or materials without prior notice and without incurring any obligation to make such changes and modifications on Watts products previously or subsequently sold.

Watts® Top Mount Faucets

You'll never need to crawl below a sink again!



Top mount faucets available in wide range of finishes.



Models with monitors are available.

Features & Benefits

- Top mount design – you'll never need to crawl below the sink again!
- Reduces installation labor.
- Totally lead free (components are stainless steel or non-metallic).
- Wide range of finishes, including chrome, brushed nickel, white & black.
- Models with filter change monitors are available to remind customers when to change cartridges for water quality assurance.
- Ceramic disc for durability.
- One style works for air gap and non-air gap installations.
- NSF certified for material requirements.

Installation Is Easy As 1, 2, 3!



Install Tubing

Watts top mount faucets come with quick connect fittings for both air gap and non-air gap installations. To start the installation process, install tubing for feed water and air gap connections, if an air gap is to be used.



Install Faucet

A. Place the o-ring (provided) around the hole, drilled in the counter top.
B. Working from the top, push tubing through the hole in the counter top;
C. Squeeze the wings of the toggle bolt so it drops through the hole in the counter top.



Secure Faucet To Counter Top

Finally, remove spout from faucet, and tighten the Phillips head screw inside the faucet with a Phillips head screwdriver. The top mount faucet installation is now complete, without the need to crawl below the sink!

Top Mount Faucet Models

Part Number	Finish	Installation Type	Tubing Size	Filter Change Monitor
WTMFAG-C-M	Chrome	Air gap or non air gap	3/8"	Yes
WTMFAG-C	Chrome	Air gap or non air gap	3/8"	No
WTMFAG-BN-M	Brushed Nickel	Air gap or non air gap	3/8"	Yes
WTMFAG-BN	Brushed Nickel	Air gap or non air gap	3/8"	No
WTMFAG-W-M	White	Air gap or non air gap	3/8"	Yes
WTMFAG-W	White	Air gap or non air gap	3/8"	No
WTMFAG-B-M	Black	Air gap or non air gap	3/8"	Yes
WTMFAG-B	Black	Air gap or non air gap	3/8"	No
WTMFAG-ORB-M	Oil Rubbed Bronze	Air gap or non air gap	3/8"	Yes
WTMFAG-ORB	Oil Rubbed Bronze	Air gap or non air gap	3/8"	No

Fittings for 1/4" connections available. Please inquire.



**Two Faucet Types
(Standard & Monitor)**



**Faucet with battery operated
filter change monitor**

Monitor faucets eliminate guesswork and remind customers when cartridge replacements are necessary to provide top water quality assurance!

How they work:

- Monitors track time and estimate gallons based on handle turns.
- LED flashes red after six months or after it estimates 4,000 gallons of water have been used by the system.
- Each time cartridges are replaced a new battery is recommended.
- New battery will reset the monitor and LED indicator is again blue.

Battery Replacement: WTMFBAT



Certified by NSF International
against NSF/ANSI Standard 42
for material requirements.

Designer RO Faucets



703 Series

703 Series Faucets

Part No.	Type	Style	Finish	Case Qty.
FU-WDF-703-CP	Non Air Gap	Designer 703 Series Forge	Chrome	30
FU-WDF-703-BN	Non Air Gap	Designer 703 Series Forge	Brushed Nickel	30
FU-WDF-703-ORB	Non Air Gap	Designer 703 Series Forge	Oil Rubbed Bronze	30



903 Series

903 Series Faucets

Part Number	Style	Finish	Case Qty.
FU-WDF-903-4	Ceramic Disc Faucet Column Handle	Chrome	30



905 Series

905 Series Faucets

Part No.	Style	Finish	Certification	Case Qty.
FU-WDF-905-CP	Ceramic Disc 1/4 Turn Faucet	Chrome	NSF61 Certified	30
FU-WDF-905-NP	Ceramic Disc 1/4 Turn Faucet	Brushed Nickle	NSF61 Certified	30



888 Series

888 Series Faucets

Part No.	Style	Finish	Certification	Case Qty.
FU-WDF-888-AB	Faucet Ceramic Disc	Antique Brass	NSF61 Certified	20
FU-WDF-888-AW	Faucet Ceramic Disc	Antique Wine	NSF61 Certified	20
FU-WDF-888-CP	Faucet Ceramic Disk	Bright Chrome	NSF61 Certified	20
FU-WDF-888-NP	Faucet Ceramic Disc	Brushed Nickel	NSF61 Certified	20
FU-WDF-888-ST	Faucet Ceramic Disc	Satin Nickel	NSF61 Certified	20

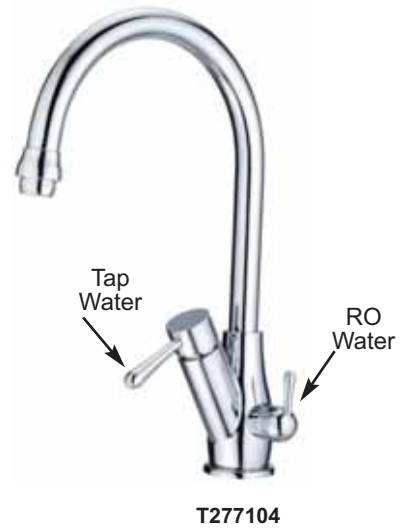


FU-AGLR.C/3 FU-WDF-103NSF FU-WDF-103-NP

Long Reach Faucets

Part No.	Type	Style	Certification	Finish	Case Qty.
FU-WDF-103NSF	Non Air Gap	Long Reach	NSF 61	Chrome	50
FU-AGLR.C/3	Air Gap	Long Reach	NSF 61	Chrome	50
FU-WDF-103-NP	Non Air Gap	Long Reach	NSF 61	Brushed Nickle	50

Dual Function Faucets



Dual Function Faucets

Part No.	Style	Finish	Certification	Case Qty
FU-GKD01-CP	Kitchen and Drinking Faucet, Straight	Chrome	3/8" Flexible Tube	8
FU-GKD02-CP	Kitchen and Drinking Faucet, Cross	Chrome	3/8" Flexible Tube	8
T277103	Kitchen and Drinking Faucet, European	Chrome	3/8" Flexible Tube	8
T277104	Kitchen and Drinking Faucet, Vase	Chrome	3/8" Flexible Tube	8

RO Storage Tanks

**Best Seller.
Try it today!**



RO PRO®

NSF certified to 100 psi. Only 9" wide.
(Takes less space below sink!)



TK-PRO-10W
NSF Certified metal tank.



PRO400W
Plastic tank - NSF Certified.



FRO-132-W
NSF Certified metal tank.



ROmate®
Pressure Tank

RO Storage Tanks

Part Number	Capacity (Gals.)	Diameter	Height	Fitting Size (NPT)	Color	Certification	Ship. Wt. (Lbs.)
ROPRO4-W	4	9"	20"	1/4"	White	NSF 58 (100 psi)	10
ROPRO4-K	4	9"	20"	1/4"	Black	NSF 58 (100 psi)	10
ROPRO4-B	4	9"	20"	1/4"	Blue	NSF 58 (100 psi)	10
PRO4000WF	4	12"	14"	1/4"	White	NSF 58 (50 psi)	10
FRO-132-WH	3	12"	16"	1/4"	White	NSF 58 (50 psi)	11
TK-PRO-10W	10	16"	19"	1/4"	White	NSF 58 (50 psi)	20
FRO-132BL	4	12"	16"	1/4"	Blue	NSF 58 (100 psi)	11
TK-PRO-10W	10	16"	16"	1/4"	White	NSF 58 (100 psi)	20
FRO-1070-BL	14	15.2"	22.5"	3/8"	Blue	NSF 58 (100 psi)	24
FRO-1070-WT	14	15.2"	22.5"	3/8"	White	NSF 58 (100 psi)	24
FWR-140	44	21"	35.25"	3/8"	Blue	NSF 58 (100psi)	67

ROmate® Pressure Tanks For RO Water Storage

Part Number	Capacity (Gals.)	Diameter	Height	Fitting Size (NPT)	Color	Certification	Ship. Wt. (Lbs.)
C5070	20	16"	33"	1"	Blue	NSF 58 (100 psi)	26
C5080	40	16"	58"	1"	blue	NSF 58 (100 psi)	43
C5085	80	24"	57"	1-1/4"	Blue	NSF 58 (100 psi)	65

NOTE: All tanks are individually boxed.

Residential RO Membranes

Top quality membranes for residential reverse osmosis systems.



Made in U.S.A.

Watts® Residential Membranes (thin film composite)

Part Number	Application	O.D.	Length	Capacity (GPD)	No. Per Case
W-1812-24	Tap water	1.8"	11.75"	24	25
W-1812-36	Tap water	1.8"	11.75"	36	25
W-1812-50	Tap water	1.8"	11.75"	50	25
W-1812-75	Tap water	1.8"	11.75"	75	25
W-1812-100	Tap water	1.8"	11.75"	100	25

Note: W-1812-100 membranes are packaged in preservative and should be kept in a cool environment if stored for a prolonged period of time.

Watts Membrane Specifications

Data	W-1812-24	W-1812-36	W-1812-50	W-1812-75	W-1812-100
Membrane type	TCF	TCF	TCF	TCF	TCF
Material	Polyamide	Polyamide	Polyamide	Polyamide	Polyamide
Charge	Negative	Negative	Negative	Negative	Negative
Configuration	Spiral-wound	Spiral-wound	Spiral-wound	Spiral-wound	Spiral-wound
Salt rejection	96%	96%	96%	96%	96%
Max. operating temp.	113°F / 45°C	113°F / 45°C	113°F / 45°C	113°F / 45°C	113°F / 45°C
Max. operating pressure	125 psi	125 psi	125 psi	125 psi	125 psi
Max. turbidity (NTU)	1	1	1	1	1
Max. SDI	5	5	5	5	5
pH range	3-10	3-10	3-10	3-10	3-10
Flux	24 gpd	36 gpd	50 gpd	75 gpd	100 gpd

Note: Specifications based on 77°F (25°) temperature and 60 psid pressure.



Filmtec® By Dow® Residential Membranes (thin film)

Part Number	Application	O.D.	Length	Capacity (GPD)	No. Per Case
TW30-1812-24	Tap water	1.8"	11.75"	24	25
TW30-1812-36	Tap water	1.8"	11.75"	36	25
TW30-1812-50	Tap water	1.8"	11.75"	50	25
TW30-1812-75	Tap water	1.8"	11.75"	75	25
CTA-16	Desal chlorine tolerant		11.25"	16	25



TGI (1.8" x 11.75")

Part Number	Type	Size	Capacity	No./Case
MM-TFF30/45	TFC Dry	1.8"x12"	30GPD@60PSI/45GPD@100PSI	25
MM-TFF45/75	TFC Dry	1.8"x12"	45GPD@60PSI/75GPD@100PSI	25
MM-TFF60/105	TFC Dry	1.8"x12"	60GPD@60PSI/105GPD@100PSI	25
MM-TFF90/160	TFC Dry	1.8"x12"	90GPD@60PSI/160GPD@100PSI	25



GE (1.8" x 11.75")

Part Number	Type	Size	Capacity	No./Case
MM-TFM018	TFC Dry	1.8"x12"	18GPD	25
MM-TFM025	TFC Dry	1.8"x12"	25GPD	25
MM-TFM035	TFC Dry	1.8"x12"	35GPD	25
MM-TFM050	TFC Dry	1.8"x12"	50GPD	25
MM-TFM075	TFC Dry	1.8"x12"	75GPD	25
MM-TFM100	TFC Dry	1.8"x12"	100GPD	25
MM-TFM150	TFC Dry	1.8"x12"	150GPD	25

Booster Pumps



ERP-1000




CDP-6800

Permeate Pumps

Part Number	MFG.	Fitting	Electrical	Notations	No. Per Case
ERP-1000	Aquatech	1/4" JG	Non-Elec.		30

Booster Pumps (low flow)

Part Number	MFG.	Fitting	Electrical	Notations	No. Per Case
CDP-6800	Aquatech	1/4" JG	24 VAC	CE MARK	12
W152012 	Import	1/4" JG	24 VAC		12

Booster Pumps (high flow)

Part Number	MFG.	Fitting	Electrical	Notations	No. Per Case
CDP-8800	Aquatech	3/8" JG	24 VAC	CE MARK	12

Delivery / Transfer Pumps

Part Number	MFG.	Fitting	Shut-Off Pressure (PSI)	Electrical	Notations	No. Per Case
F5852-7F12-J604	Aquatech	3/8" JG	70	115V	w/cord 1.4 gpm	1
F5852-1E13-J574	Aquatech	3/8" JG	70	115V	w/cord 0.6 gpm	1

Variable Speed Pumps

Part Number	MFG.	Fitting	Shut-Off Pressure (PSI)	Electrical	Notations	No. Per Case
F5853-GB12-V81D	Aquatech	3/8" JG	40	115V	W/CORD	1
F5853-GE12-V81D	Aquatech	3/8" JG	60	115V	W/CORD	1
F5502-IDN2-V77D	Aquatech	3/8" ports*	50	115V	W/CORD	1

Note: Pumps above come with power cords. *Ports only. QJS553 (3/8" tube) or QJS554 (3/8" tube) fitting required. See accessories.

Transformers

Part Number	Description	Pump	Electrical
TAS-114-19-EP1	Transformer	6800	115V 0.8 AMP
TAS-234-19EP	Transformer	6800	230V 0.8 AMP
TAS-104-19	Transformer	6800	100V 0.8 AMP
TACS-114-48	Transformer	8800, 5800	115V 2 AMP
TACS-234-48RF	Transformer	8800, 5800	230V 2 AMP
TAS-104-48	Transformer	8800, 5800	100V 2 APM
W152018	Transformer	W152012	110V
W152029	Transformer	W152012	220V

Note: All transformers are shipped individually.

Pump Accessories

Part Number	Description	Pump	No./Case
AFR-603	Auto flush valve	6800 & 8800	1
PSW-240	Tank psi switch 1/4" JG	6800 & 8800	1
PSW-340	Tank psi switch 3/8" JG	6800 & 8800	1
ESO-460-093	Electronic solenoid valve	6800 & 8800	1
LPS	Low pressure switch	6800 & 8800	1
TLC-DC	Tank level controller	6800 & 8800	1
ASV2000	Shut-off valve	ERP-1000	1
M53-095-AC	Rear end bell	6800	1
F68011	Pump head	6800	1
QJS553	3/8" x 3/8" fitting	5502-IDN2-V77D	1
QJS554	1/2" x 1/2" fitting	5502-IDN2-V77D	1
PPC-1000	Clips for permeate pump	ERP-1000	1

Membrane Housings

Top quality membrane housings for residential RO systems.



EH-2500W



EH-2501W



EH-2501KHCW



Flowmeter membrane housings are manufactured from the highest quality NSF listed, FDA grade polypropylene, WQA validated.

Features

- Standard 1/8" NPT molded threads
- Models with John Guest® fittings
- High quality finish
- Burst pressure exceeds 500 psi
- Cycle test 150 psi, 150,000 cycles
- Choice of five housing styles to meet every requirement



MH-200WL/3

Membrane Housings

Part Number	Description	Size	Color	Fittings	No./Case
EH-2500W	Side, Side, Side	1/8"	White	None	25
EH-2501W	Side, Side, Side	1/8"	White	None	25
EH-2500KW	End, Side, Side	1/8"	White	None	25
EH-2501KW	End, Side, Side	1/8"	White	None	25
EH-2501KHCW	End, Side, Side	1/4"	White	J.G.	25
MH-200WL	End, Side, Side	-	White	None	35
MH-200WL/3	End, Side, Side	-	White	None	24
MH-WWF/3	Membrane Housing Wrench	-	Black	-	1

O-Rings

Part Number	Description	No./Case
OR-2	O-ring for EH series housings	1
MM-ORING	Filmtec 1812 Membrane O-Ring	1
MM-ORING.CAP	O Ring For MH-200WL Cap	1
MH-ORING/3	O Ring For MH-200WL/3	1
MH-ORING/34	O Ring For Cap	1
MM-TOOL	Filmtec Membrane (18 X 12) Release Tool	1

Mounting Clips

Polypropylene molded clips in six styles and colors.



Mounting Clips

Part Number	Size	Color	Description	No. / Case
C-2000B	2"	Black	In-line	500
C-2000W	2"	White	In-line	500
C2500B	2-1/2"	Black	Single, membrane	300
C2500W	2-1/2"	White	Single, membrane	300
C3000B	--	Black	For shut-off valve	500
C3000W	--	White	For shut-off valve	500
DC2000W	2" x 2"	White	Double in-line	300
DC2500B	2-1/2" x 2"	Black	Dual	300
DC2500W	2-1/2" x 2"	White	Dual	300
DC3000W	2-1/2" x 2-1/2"	White	Double	300

Feed Water & Drain Saddle Valves



ADAPT-A-VALVE
F560070



SV-3



SV-6



SV-6EZ



Sea Tech
F3561-0604 (1/4")
F3561-0606 (3/8")



SV-1 & SV-2



SVBV-14



VV-DSP014JG



John Guest
Angle Stop Valve

Feed Water Valves

Part Number	Description	Tube Size	No./Case
F560070	Adapt-A-Valve for angle stop (assembly for 1/4" & 3/8" pipe connections)	1/4"	1
F3561-0604	Sea-Tech feed valve for angle stop	1/4"	1
F3561-0606	Sea-Tech feed valve for angle stop	3/8"	1
PPASV121208W	John Guest feed valve for angle stop	1/4"	1
PPASV121212W	John Guest feed valve for angle stop	3/8"	1
SV-1	Self piercing 1/4" Compression 1/2" MNPT 1/2" FNPT	1/4"	200
SV-2	Self piercing 1/4" Compression 3/8" MNPT 3/8" FNPT	1/4"	250
SV-3	Self piercing 1/4" Compression fits pipe 3/8	1/4"	250
SV-3L	Self piercing 1/4" Compression fits pipe 3/8 LOW LEAD	1/4"	250
SV-6	Self piercing 1/4" Compression fits pipe 3/8 to 5/8"	1/4"	250
SV-6-EZ	Self piercing 1/4" Compression fits pipe 3/8 to 5/8" easy	1/4"	250
SV-6-38	Self piercing 3/8" compression fits pipe 3/8" to 5/8"	3/8"	250
VV-FWB014S	Self piercing valve 1/4" compression	1/4"	1
VV-FWB014S1	Self piercing 1/4" compression USA made NSF	1/4"	1
VV-WWC-1	1/2" x 1/8" x 1/2" adapter with washers chrome	1/4"	300
VV-WWC-14	1/4" hole x 1/2" x 1/2" feed water adapter chrome	1/4"	1
VV-WWC-1-38	WFA - 13 3/8" x 1/8" x 3/8" chrome #3 mark	3/8"	1
VV-WNV-4	1/4" OD x 1/8" MNPT chrome	1/4"	500
VV-TKB18	Ball valve 1/8" M x 1/4" TB fits VV-WWC-1 1/4 turn handle	1/4"	400
VV-TKB14	Chrome ball valve 1/4" x 1/4" with 1/4 turn handle	1/4"	1
SVBV-14	1/4" John Guest threaded pipe connection 1/2" MNPT x 1/2" FNPT	1/4"	25
SVBV-38	3/8" John Guest threaded pipe connection 1/2" MNPT x 1/2" FNPT	3/8"	25

Drain Saddle Valves

Part Number	Description	Tube Size	No./Case
VV-DSP014/3	1/4" (Hex) black "Made in USA"	500	1/4"
VV-DSP014B/3	1/4" compression black	200	1/4"
VV-DSP038	3/8" (Hex) black "Made in USA"	500	3/8"
VV-DSP0.8B/3	3/8" compression black	200	3/8"
VV-DSP014W	1/4: Drain saddle valve female white	200	1/4"
VV-DSP014JG	Drain saddle valve 1/4" with JG quick connect black	500	1/4"
VV-DSP038JG	Drain saddle valve 3/8" with JG quick connect black	500	3/8"
VV-DSI000	Adjustable 1/4" steel compression brass	1	1/4"
VV-DS1000.38	Adjustable 3/8" steel compression brass	1	3/8"
SC500B14	3/8" Jaco fitting saddle valve fits pipe 3/8" to 1-1/4"	200	1/4"
SC500B38	1/4" Jaco fitting saddle valve fits pipe 3/8" to 1-1/4"	200	3/8"
F12-38JG	3/8" Jaco fitting saddle valve fits 1-1/2" drain lines	10	3/8"

John Guest® Tubing

Top-of-the-line tubing for customers who demand the best!



John Guest® Tubing

Part Number	Size	Length	Color	No. / Case
PE-08-BI-0500FN	1/4"	500 (ft)	Natural	2
PE-08-BI-0500FW	1/4"	500 (ft)	White	2
PE-08-BI-0500FE	1/4"	500 (ft)	Black	2
PE-08-BI-0500FB	1/4"	500 (ft)	Blue	2
PE-08-BI-0500FR	1/4"	500 (ft)	Red	2
PE-08-BI-0500FO	1/4"	500 (ft)	Orange	2
PE-08-BI-0500FG	1/4"	500 (ft)	Green	2
PE-08-BI-0500FY	1/4"	500 (ft)	Yellow	2
PE-08-BI-1000FN	1/4"	1000 (ft)	Natural	1
PE-08-BI-1000FW	1/4"	1000 (ft)	White	1
PE-08-BI-1000FE	1/4"	1000 (ft)	Black	1
PE-08-BI-1000FB	1/4"	1000 (ft)	Blue	1
PE-08-BI-1000FR	1/4"	1000 (ft)	Red	1
PE-08-BI-1000FO	1/4"	1000 (ft)	Orange	1
PE-08-BI-1000FG	1/4"	1000 (ft)	Green	1
PE-08-BI-1000FY	1/4"	1000 (ft)	Yellow	1
PE-10-CI-0500FB	5/16"	500 (ft)	Blue	2
PE-12-EI-0500FN	3/8"	500 (ft)	Natural	1
PE-12-EI-0500FW	3/8"	500 (ft)	White	1
PE-12-EI-0500FE	3/8"	500 (ft)	Black	1
PE-12-EI-0500FB	3/8"	500 (ft)	Blue	1
PE-12-EI-0500FR	3/8"	500 (ft)	Red	1
PE-12-EI-0500FO	3/8"	500 (ft)	Orange	1
PE-12-EI-0500FG	3/8"	500 (ft)	Green	1
PE-12-EI-0500FY	3/8"	500 (ft)	Yellow	1
PE-16-GI-0250FE	1/2"	250 (ft)	Black	1
PE-16-GI-0250FN	1/2"	250 (ft)	Natural	1

Miscellaneous

Part Number	Description	No. Per Case
TSNIP	Tube cutter	1
BLADES	Replacement blades	1
INS14	Tube insert for 1/4" OD tubing	100
INS38	Tube insert for 3/8" OD tubing	100
SL14	Tube sleeve for 1/4" OD tubing	100
SL38	Tube sleeve for 3/8" OD tubing	100
NP1400	SCH. 80 PVC close nipple for 1/4" MNPT x close	10
NP1415	SCH. 80 PVC nipple for 1/4" MNPT x 1-1/2"	10
NP1425	SCH. 80 PVC nipple for 1/4" MNPT x 2-1/2"	10
NP3815	SCH. 80 PVC nipple for 3/8" MNPT x 1-1/2"	10
NP1225	SCH. 80 PVC nipple for 1/2" MNPT x 2-1/2"	10
NP3425	SCH. 80 PVC nipple for 3/4" MNPT x 2-1/2"	10
NP1030	SCH. 80 PVC nipple for 1" MNPT x 3"	10

Watts® Tubing



Watts Tubing

Part Number	Size	Length (Feet.)	Color	No./ Case
FMPE-14-W-500	1/4"	500	White	1
FMPE-14-B-500	1/4"	500	Black	1
FMPE-14-L-500	1/4"	500	Blue	1
FMPE-38-W-250	3/8"	250	White	1
FMPE-38-B-250	3/8"	250	Black	1
FMPE-38-L-250	3/8"	250	Blue	1

Polyethylene Tubing

Part Number	Size	Length (Feet.)	Color	No./ Case
I8030	.375"	100'	Black	1
I8040	.50"	100'	Black	1
I8045	.625"	100'	Black	1
I8050	.25"	100'	Blue	1
I8055	.25"	100'	Red	1
I8060	.25"	100'	Black	1
I8065	.375"	100'	Blue	1
I8070	.375"	100'	Black	1
I8080	.50"	100'	Black	1

White Vinyl Tubing

Part Number	Size	Length (Feet.)	Color	No./ Case
TL300	1/4"		White	1
TL300-5	1/4"	500	White	1
TL375-5	3/8"	500	White	1

PVC Hose

Part Number	Size	Length (Feet.)	Color	No./ Case
Q56050	.5"	300	Gray	1
Q56075	.75"	100	Gray	1
Q56100	1.0"	100	Gray	1

Genuine John Guest® Fittings

Quick connect fittings to reduce labor costs and provide quality assurance.

John Guest® Male Connectors (gray)



Part Number	Tube Size	Thread Size	Other	No./Case
PI010821S	1/4"	1/8"	-	500
PI010822S	1/4"	1/4"	-	400
PI010823S	1/4"	3/8"	-	300
PI011222S	3/8"	1/4"	-	250
PI011223S	3/8"	3/8"	-	200
PI011224S	3/8"	1/2"	-	150
PI011623S	1/2"	3/8"	-	150
PI011624S	1/2"	1/2"	-	150

John Guest® Union Tees (gray)



Part Number	Tube Size	Thred Size	Other	No./Case
PI0208S	1/4"	-	-	300
PI0212S	3/8"	-	-	100
PI0216S	1/2"	-	-	50

John Guest® Union Elbows (gray)



Part Number	Tube Size	Thred Size	Other	No./Case
PI0308S	1/4"	-	-	400
PI0312S	3/8"	-	-	200
PI0316S	1/2"	-	-	100

John Guest® Union Connectors (gray)



Part Number	Tube Size	Thred Size	Other	No./Case
PI0408S	1/4"	-	-	500
PI0412S	3/8"	-	-	200
PI0416S	1/2"	-	-	100

John Guest® Stem Adapters (gray)



Part Number	Tube Size	Thred Size	Other	No./Case
PI050821S	1/4"	1/8"	1/4" stem	500
PI050822S	1/4"	1/4"	1/4" stem	500
PI051222S	3/8"	1/4"	3/8" stem	300
PI051624S	1/2"	1/2"	1/2" stem	150

Note: Fittings packaged 10 per poly bag.

Genuine John Guest® Fittings

Quick connect fittings to reduce labor costs and provide quality assurance.

John Guest® Reducers (gray)



Part Number	Tube Size	Thred Size	Other	No./Case
PI061208S	1/4"	-	3/8" stem	400
PI061612S	3/8"	-	1/2" stem	250

John Guest® Plugs (gray)



Part Number	Tube Size	Thred Size	Other	No./Case
PI0812S	-	-	1/4" stem	400
PI1208S	-	-	3/8" stem	500

John Guest® Reducing Unions (gray)



Part Number	Tube Size	Thred Size	Other	No./Case
PI201008S	-	-	5/16" tube	200
PI201208S	-	-	1/4" tube	200

John Guest® Reducing Elbows (gray)



Part Number	Tube Size	Thred Size	Other	No./Case
PI211008S	1/4"	-	5/16" tube	200
PI211208S	3/8"	-	1/4" tube	200
PI211612S	1/2"	-	3/8" tube	100

John Guest® Plug-In Elbows (gray)



Part Number	Tube Size	Thred Size	Other	No./Case
PI220808S	1/4"	-	1/4" stem	500
PI221208S	1/4"	-	3/8" stem	300
PI221212S	3/8"	-	3/8" stem	200

John Guest® Reducing Branch Tees (gray)



Part Number	Tube Size	Thred Size	Other	No./Case
PI301208S	3/8" x 2	-	1/4" tube	150
PI301612S	1/2" x 2	-	3/8" tube	50

Note: Fittings packaged 10 per poly bag.

Genuine John Guest® Fittings

Quick connect fittings to reduce labor costs and provide quality assurance.

John Guest® NPTF Faucet Connectors (gray)



Part Number	Tube Size	Thred Size	Other	No./Case
CI3208U7S	1/4"	7/16"	-	250
CI3212U7S	3/8"	7/16"	-	250

John Guest® NPTF Female Adapters (gray)



Part Number	Tube Size	Thred Size	Other	No./Case
PI450822S	1/4"	1/4"	-	400
PI451222S	3/8"	3/8"	-	250

John Guest® End Stops (gray)



Part Number	Tube Size	Thred Size	Other	No./Case
PI4608S	1/4"		-	500
PI4612S	3/8"		-	500

John Guest® NPTF Fixed Elbows (gray)



Part Number	Tube Size	Thred Size	Other	No./Case
PI480821S	1/4"	1/8"	-	500
PI480822S	1/4"	1/4"	-	400
PI480823S	1/4"	3/8"	-	400
PI481222S	3/8"	1/4"	-	200
PI481223S	3/8"	3/8"	-	200

John Guest® Miscellaneous



Part Number	Size	No./Case
PI491612S	1/2" x 3/8" three-way divider	100
PI2312S	3/8" Two- way divider	100
PI4712S	3/8" Cross	1000
PI2808S	1/4" Plastic half cartridge	1000
PI2812S	3/8" Plastic half cartridge	1000
TSPITool	3/8" Release tool set	50
PIC1808R	1/4" Locking clip red	1000
PIC1812R	3/8" Locking clip red	1000
I1020-10	Tool silicone 5.3 oz tube	12
I1050	t teflon tape .50" x 520.0	144
I1055	Tool teflon tape .75"x 520.0	144
I1080	Tool leak lock blue	12

Note: Fittings packaged 10 per poly bag.

Genuine John Guest® Fittings

Quick connect fittings to reduce labor costs and provide quality assurance.



Male Connector



Union Tee



Union Connector



Reducer



Plug-In Elbow



Fixed Elbow

John Guest Brand Fittings (white)

Part Number	Description	Tube	Other	Thread Size	No./ Case
CI010822W	Male Connector	1/4"	-	1/4"	400
CI011222W	Male Connector	3/8"	-	1/4"	250
CI0208W	Union Tee	1/4"	-	-	300
CI0212W	Union Tee	3/8"	-	-	100
CI0408W	Union Connector	1/4"	-	-	400
CI0412W	Union Connector	3/8"	-	-	200
CI061208W	Reducer	1/4"	3/8" stem	-	400
CI220808W	Plug-in elbow	1/4"	1/4" stem,	-	500
CI221208W	Plug-in elbow	1/4"	3/8" stem	-	300
CI221212W	Plug-in elbow	3/8"	3/8" stem	-	200
CI480821W	Fixed elbow	1/4"	-	1/8"	500
CI480822W	Fixed elbow	1/4"	-	1/4"	400
CI481222W	Fixed elbow	3/8"	-	1/4"	200

Note: Fittings packaged 10 per poly bag.

Flowmatic® Brand Ball Valves

Made using FDA grade polypropylene with o-ring seals & molded-in ball design.



BV250B

BV9014WHC

BV250W

BV9014W

BV9014B

Flowmatic Ball Valves

Part Number	Description	Fitting	Color	Size	No. / Case
BV250W	Straight	JACO	White	1/4"	400
BV250B	Straight	JACO	Black	1/4"	400
BV9014W	Elbow	JACO	White	1/4"	500
BV9014B	Elbow	JACO	Black	1/4"	500
BV9014W-HC	Elbow	J. Guest	White	1/4"	500
BV9038W	Elbow	JACO	White	3/8"	50

John Guest Brand Shut-Off Valve



Part Number	Description	No. / Case
PPSV010822W	1/4" x 1/4" Male NPTF straight valve	200
PPSV011223W	3/8" x 3/8" Male NPTF straight valve	100
PPSV040808W	1/4" x 1/4" Straight valve	200
PPSV041212W	3/8" x 3/8" Straight valve	100
PPSV500822W	1/4" x 1/4" Female NPTF elbow valve	200
PPSV501222W	3/8" x 1/4" Female NPTF elbow valve	1
PPASV121208W	Angle strap, 3/8", 3/8", 1/4"	1
PPASV121212W	Angle strap, 3/8", 3/8", 3/8"	1

John Guest Misc Parts & Fittings



Part Number	Description	No. / Case
PI2808S	1/4" Plastic half cart. grey body, grey collet	1000
PI2808W	1/4" Plastic half cart. white body, white collet	1000
PI2812S	3/8" Plastic half cart. grey body, grey collet	1000
PI2812W	3/8" Plastic half cart. white body, white collet	1000
CP-R081-S	1/4" O-ring	5000
CP-R121-S	3/8" O-ring	5000
CP-R161-S	1/2" O-ring	3000

Jaco® Brand Compression Fittings

With molded in-tube sleeve, made from FDA grade, NSF listed Nylon.

Jaco® Brand Male Connectors



Part Number	Tube Size	Thread Size	Color	No. Case
F10-4-2-N-O	1/4"	1/8"	White	100
F10-4-4-N-O	1/4"	1/4"	White	100
F10-4-6-N-O	1/4"	3/8"	White	100
F10-6-4-N-O	3/8"	1/8"	White	100
F10-6-6-N-O	3/8"	3/8"	White	100
F10-6-8-N-O	3/8"	1/2"	White	100
F10-8-8-N-O	1/2"	1/2"	White	100
F10-8-8-N-PG	1/2"	1/2"	White	100

Jaco® Brand Union Connectors (nylon)



Part Number	Tube Size	Thread Size	Color	No. Case
F15-4-N-O	1/4"	-	White	300
F15-6-4-N-O	3/8"	-	White	-
F15-6-N-O	3/8"	-	White	100

Jaco® Brand Female Connectors (nylon)



Part Number	Tube Size	Thread Size	Color	No. Case
F25-4-4-N-O	1/4"	1/4"	White	100
F25-8-8-N-PG	1/2"	1/2"	White	100

Jaco® Brand Male Elbows (Nylon)



Part Number	Tube Size	Thread Size	Color	No. Case
F40-4-2-N-O	1/4"	1/8"	White	100
F40-4-4-N-O	1/4"	1/4"	White	100
F40-4-6-N-O	1/4"	3/8"	White	100
F40-6-4-N-O	3/8"	1/4"	White	100
F40-6-6-N-O	3/8"	3/8"	White	100
F40-8-8-N-O	1/2"	3/8"	White	100

Jaco® Brand Female Elbows (nylon)



Part Number	Tube Size	Thread Size	Color	No. Case
F45-4-4-N-O	1/4"	1/4"	White	100
F45-6-4-N-O	3/8"	1/4"	White	100
F45-6-6-N-O	3/8"	3/8"	White	100
F45-8-8-N-O	1/2"	1/2"	White	100

Jaco® Brand Compression Fittings

With molded in-tube sleeve, made from FDA grade, NSF listed Nylon.



Jaco® Brand Union Elbows (nylon)

Part Number	Tube Size	Thread Size	Color	No. Case
F50-4-N-O	1/4"	-	White	100
F50-6-N-O	3/8"	-	White	100
F50-8-N-O	1/2"	-	White	100



Jaco® Brand Branch Tees (nylon)

Part Number	Tube Size	Thread Size	Color	No. Case
F60-4-2-N-O	1/4"	1/8"	White	100
F60-4-4-N-O	1/4"	1/4"	White	100
F60-6-4-N-O	1/4"	1/8"	White	100



Jaco® Brand Union Tees (nylon)

Part Number	Tube Size	Thread Size	Color	No. Case
F70-4-N-O	1/4"	-	White	100
F70-6-N-O	3/8"	-	White	100



Jaco® Brand Male Run Tees (nylon)

Part Number	Tube Size	Thread Size	Color	No. Case
F75-4-4-N-O	1/4"	1/4"	White	100
F75-6-4-N-O	3/8"	1/8"	White	100



Jaco® Brand Compression Nuts (nylon)

Part Number	Tube Size	Thread Size	Color	No. Case
N-O-4W	1/4"	-	White	100
N-O-4BLK	1/4"	-	Black	100
N-O-6W	3/8"	-	White	100
N-O-6BLK	3/8"	-	Black	100

Sea Tech® Fittings

Valve Angle Stops



Part Number	Tube Seize	Per Box
F3561-0604	3/8"MX3/8"F W/1/4"OD	50
F3561-0606	3/8"MX3/8"F W/1/4"OD	50
F3501-0806	3/8"MX3/8"F W/3/8"	50

Male Connectors



Part Number	Tube Seize	Per Box
F3501-1008	1/2"CTS X 1/2"NPT	130
F3501-1012	1/2"CTS X 3/4"NPT	100
F3501-1412	3/4"CTS X 3/4"NPT	40
F3501-1816	1"MPT X 1"CTS	20

Female Connectors



Part Number	Tube Seize	Per Box
F3510-1412	3/4"CTS X 3/4"NPS	60
F3510-1816	1"CTS X 1"NPS	35

Reducing Stems



Part Number	Tube Seize	Per Box
F3514-1008	1/2"CTS X 3/8"CTS	100
F3514-1410	3/4"CTS STEM X 1/2"CTS	100
F3514-1814	1"CTS STEM X 3/4"CTS	50

Union Connector



Part Number	Tube Seize	Per Box
F3515-10	1/2" CTS	90
F3515-14	3/4" CTS	40
F3515-18	1" CTS	20

Union Elbows



Part Number	Tube Seize	Per Box
F3517-08	3/8" CTS	100
F3517-10	1/2" CTS	80
F3517-14	3/4" CTS	30
F3517-18	1" CTS	20

Reducing Union



Part Number	Tube Seize	Per Box
F3515R-1008	1/2" CTS X 3/8" CTS	90

Sea Tech® Fittings

Stackable Elbows



Part Number	Tube Seize	Per Box
F3518-08	3/8" CTS	120
F3518-10	1/2" CTS	100
F3518-14	3/4" CTS	50
F3518-18	1" CTS	25

Male Elbows



Part Number	Tube Seize	Per Box
F3519-1008	1/2" Tube X 1/2" NPT	100
F3519-1816	1"CTS X 1"NPT	25

Female Connector Elbows



Part Number	Tube Seize	Per Box
F3520-0808	3/8" CTS X 3/8" NPS	80
F3520-1008	1/2" CTS X 1/2" NPS	80

Union Tees



Part Number	Tube Seize	Per Box
F3523-08	3/8" CTS	80
F3523-10	1/2" CTS	50
F3523-14	3/4" CTS	20
F3523-18	1" CTS	15

Reducing Tees



Part Number	Tube Seize	Per Box
F3524-1410	3/4" CTS X 1/2" CTS	25
F3524R-1004	1/2" CTS X 1/4" O.D.	50
F3524R-1410	3/4" CTS X 1/2" CTS	25
F3524R-1814	1" CTS X 3/4"CTS	15

Male Stem



Part Number	Tube Seize	Per Box
F3527-1008	1/2"CTS X 1/2"NPT	200

Male Thread Tee



Part Number	Tube Seize	Per Box
F3530-1008	1/2" CTS X 1/2" MPT	60

Sea Tech® Fittings



Stackable Tees

Part Number	Tube Seize	Per Box
F3533-08	3/8" CTS	80
F3533-10	1/2" CTS	50



Reducing Stackable Tees

Part Number	Tube Seize	Per Box
F3533-1004	1/2" C	50



Stackable Branch Tee

Part Number	Tube Seize	Per Box
F3534-10	1/2" CTS	50



Stop Valve

Part Number	Tube Seize	Per Box
F3539-08	3/8" CTS	40
F3539-10	1/2" TUBE x 1/4" TUBE	40
F3539-1004	1/2" TUBE x 1/4" TUBE	40
F3539-14	3/4" CTS	10
F3539R-1004	1/2" CTS X 1/4" O.D.	40



Reducing Stackable Valve

Part Number	Tube Seize	Per Box
F3543-1004	1/2"CTS X 1/4"OD	40



End Stop

Part Number	Tube Seize	Per Box
F3545-10	1/2" CTS	100
F3545-14	3/4" CTS	90
F3545-18	1" CTS	50



Collet Clip

Part Number	Tube Seize	Per Box
F3547-08	3/8" CTS	2500
F3547-10	1/2" CTS	2500
F3547-14	3/4" CTS	2000
F3547-18	1" CTS	1500

Flow Restrictors

Inserts for Jaco® & John Guest® fittings and totally assembled fittings with inserts.



Flow Restrictors (inserts)

Part Number	To Drain (GPD)	Color	No./Case
Insert to fit JACO 1/8" elbow			
FR-50-256	50	Yellow	100
FR-70-256	70	Blue	100
FR-100-256	100	Red	100
FR-125-256	125	Green	100
FR-150-256	150	Black	100
FR-200-256	200	Brown	100
Insert to fit John Guest 1/8" elbow			
FR-50-220	50	Yellow	100
FR-70-220	70	Blue	100
FR-100-220	100	Red	100
FR-125-220	125	Green	100
FR-150-220	150	Black	100
FR-200-220	200	Brown	100
Assembled Jaco			
FR-50-256JF	50	Yellow,	40-4-2-N-O
FR-70-256JF	70	Blue,	40-4-2-N-O
FR-100-256JF	100	Red,	40-4-2-N-O
FR-125-256JF	125	Green,	40-4-2-N-O
FR-150-256JF	150	Black,	40-4-2-N-O
FR-200-256JF	200	Brown,	40-4-2-N-O
John Guest			
FR-50-220JG	50	Yellow,	PI480821S
FR-70-220JG	70	Blue,	PI480821S
FR-100-220JG	100	Red,	PI480821S
FR-125-220JG	125	Green,	PI480821S
FR-150-220JG	150	Black,	PI480821S
FR-200-220JG	200	Brown,	PI480821S

Note: Select a flow restrictor that is rated at approximately three times the RO's production rate. Fittings are also available in white.

Flow-Pur Capillary Tube Restrictor



Part Number	Flow (GPD)	Flow (MLM)	Fitting	No./Case
FLOW-185	49	185	1/4" Quick conn.	50
FLOW-250	66	250	1/4" Quick conn.	50
FLOW-350	93	350	1/4" Quick conn.	50
FLOW-420	111	420	1/4" Quick conn.	50
FLOW-525	139	525	1/4" Quick conn.	50
FLOW-800	211	800	1/4" Quick conn.	50

Totally assembled fittings and inserts using J.G. and Jaco fittings.

Auto Shut Off Valves



FC-ASV4000



FC-CVS018SS



FC-DR300Q/2



Capillary Tubes

Auto Shut Off Valves

Part Number	Description	No./Case
FC-ASV4000	Auto Shut Off Valve W/Quick Connect Fittings White (Best Buy)	200

Check Valves

Part Number	Description	No./Case
FC-CVS018SS	Stainless Steel Check Valve 1/8" nptm X 1/8" nptm	1
FC-CVS4000	Check Valve 1/8" Npt Elbow Quick Connect 1/4"(2001) (Best Buy)	100
JG-138120-S	(/SCV) John Guest Check Valve 3/8"	80

Flow Restrictors

Part Number	Description	No./Case
FC-DR110I	Capillary Tube Flow Restrictor 110 ML/Min. Red	50
FC-DR200I	Capillary Tube Flow Restrictor 200 ML/Min. (Brown)	50
FC-DR300I	Capillary Tube Flow Restrictor 300 ML/Min. (Black)	50
FC-DR400I	Capillary Tube Flow Restrictor 400 ML/Min. (Yellow)	50
FC-DR525I	Capillary Tube Flow Restrictor 525 ML/Min. (Green)	50
FC-DR620I	Capillary Tube Flow Restrictor 620 ML/Min. (Blue)	50
FC-DR730I	Capillary Tube Flow Restrictor 730 ML/Min. (White)	50
FC-DR850I	Capillary Tube Flow Restrictor 850 ML/Min. (White)	50
FC-DR200Q/2	Flow Restrictor 200ML/Min W/Quick Connect 1/4"	10
FC-DR250Q/2	Flow Restrictor 250ML/Min W/Quick Connect 1/4"	10
FC-DR300Q/2	Flow Restrictor 300ML/Min W/Quick Connect 1/4"	10
FC-DR350Q/2	Flow Restrictor 350ML/Min W/Quick Connect 1/4"	10
FC-DR400Q/2	Flow Restrictor 420ML/Min W/Quick Connect 1/4"	10

Regulators, Flow Meters, Gauges

Part Number	Description	No./Case
FC-REG.060B	Watts Inline Regulator 0-60 psi Brass 1/4" Female	1
FC-REG05-3/8	Watts 05-3/8" Water Hammer Arrester 3/8"	1
FC-REG91W	(RW-AK-NLN) Regular W/O Gauge Stainless Steel	1

Flow Meters

Part Number	Description	No./Case
FC-FM0505	Flow Meter 0.5-5.0 GPM	1
FC-FM1010	Flow Meter 1.0-10 GPM	1
FC-FM0114	Flow Meter LCD Display 0.1-1.0 GPM 1/4" Quick Connect	1

Counter Top Accessories

Part Number	Description	No. Per Case
WR100	(Housing wrench) CT-4000, APO-CTW, APC-CTW	100
WR400	(Housing wrench) SS4000	100
OR-4	(Spare o-ring) CT-4000, APO-CTW, CT500	100
OR-4W	(Spare o-ring) SS4000 in EPDM	100
OR-1W	(Spare o-ring) SS1000 in EPDM	100



Counter Top Spouts

Part Number	Description	No. Per Case
LRS-C-OR	L.R.S chrome, double o-rings	100
LRS-P-OR	L.R.S plastic, double o-rings	100
TS-800C-OR	Std. 8" chrome, double o-ring	100
TS-800P	Std. 8" plastic, no o-ring	100
PTS-800W	Std. 8" plastic, double o-rings	100

Diverter Valves

Part Number	Description	No. Per Case
DV-14	Spring loaded, chrome, 1/4" single	200
DV-14S	Spring loaded, chrome, 1/4" single, swivel	200
SDV-14S	Manual slide, chrome, 1/4" single, swivel	200
SDV-14CQ	Manual slide, chrome, 1/4" fast connect	200
DVB-14C	Manual handle, 1/4" single, chrome	100
DVB-38C	Manual handle, 3/8" single, chrome	100
DV-14CDB	Spring loaded, 1/4" double, chrome	200
DV800W	Plastic, 1/4" single, white	500
DV800WM	Plastic, 1/4" single, metal collar	500
DV803WM	1/4" double, white, metal collar	500
DV806WM	1/2" double, white, metal collar	500

Diverter Valve Adapters

Part Number	Description	No. Per Case
AD1P/AD2P	Plastic, male 13/16", 15/16" X 27	500
AD1C/AD2C	Chrome, male 13/16", 15/16" X 27	500
ETA	External faucet for all diverters	100
ETA-C	External faucet, chrome / brass	100

Counter Top Fittings

Part Number	Description	No. Per Case
C-21-1	Chrome elbow for spouts w/o o-rings	100
C-22N	Chrome elbow, barbed inlet, 1/4" barb	100
EB-14W	Plastic elbow, barbed inlet, 1/4" barb	100
EB-14LW	Plastic elbow for spouts w/o o-rings	100
CI010822W	Inlet fitting for 1/4" quick connect	100
CI481222W	Elbow for spouts w/o o-rings	100

Flowmatic® Brand Automatic Shut-Off Valves

The original “dual diaphragm” design, with lifetime warranty!

The original *dual diaphragm* design of Flowmatic’s WQA validated valves provide automatic shut-off to supply line when storage tank reaches 65% of inlet pressure, to potentially save thousands of gallons of water per year. Valves are made using FDA grade, NSF certified materials in choice of models and colors. Comes with a lifetime warranty!

Flowmatic Brand Shut-Off Valves

Part Number	Size	Fittings	Color	No. / Case
S2000W	1/8"	Jaco	White	100
S2000B	1/8"	Jaco	Black	100
S2000HCW	1/4"	John Guest	White	40
S2000HCB	1/4"	John Guest	Black	40
S3000W	1/4"	Jaco	White	100
S3000B	1/4"	Jaco	Black	100
S3000HCW	1/4"	John Guest	White	50
S3000HCB	1/4"	John Guest	Black	50



Replacement Diaphragms*

Part Number	Description	No. / Case
DPG3000A	Upper Diaphragm (S2000, 3000)	200
DPG3000B	Lower Diaphragm (S2000, 3000)	100

*Prior purchase required

Waterminders®

Valves provide automatic shut-off, based on gallons filtered.

These unique, patented meter valves provide automatic shut off of a potable water system for filter replacement after a pre-determined quantity of water has been filtered.

Features

- Choice of 1,800 or 3,800 gallon capacity
- Settings in 100 gallon increments
- Accuracy within 10% of setting
- Operating pressures from 15 to 125 psi
- Burst tested to 500 psi
- Assortment of fittings
- Manufactured using NSF listed materials
- Models for gallons or liters

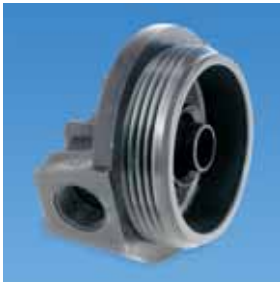


Part Number	Capacity	Fittings	Color	Size	No. / Case
WM2000B	1800 (gals.)*	Jaco	Black	1/4" MNPT	60
WM2000W	1800 (gals.)*	Jaco	White	1/4" MNPT	60
WM3000B	3800 (gals.)*	Jaco	Black	1/4" MNPT	60
WM3000W	3800 (gals.)*	Jaco	White	1/4" MNPT	60
WM3001B	15000 (ltrs.)*	Jaco	Black	1/4" MNPT	60
WM2001B	7000 (ltrs.)*	Jaco	Black	1/4" MNPT	60
WM2000HCW	1800 (gals.)*	J. Guest	White	1/4"	60
WM2000HCB	1800 (gals.)*	J. Guest	Black	1/4"	60

Note: * With dial which may be adjusted in increments of 100 gallons.

Plastic Filter Housings

Top quality and economically priced plastic filter housings in generic packaging.



Butress Thread Design

Provides superior sealing and greater security.



Heavy Duty Construction

Housings are made entirely of the highest quality FDA grade NSF listed polypropylene.



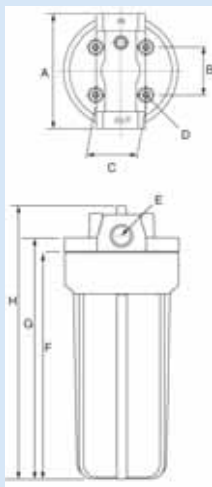
Features & Benefits

- Full product line for more types, models, pipe fittings and options than anyone in the business!
- Heavy duty construction, made using high quality FDA grade polypropylene.
- Superior chemical resistance from many aggressive chemicals.
- Butress thread design for superior sealing and security.
- Thick side walls with heavy-duty ribs to provide greater strength.
- Temperature rated to 125°F (52°C).
- Pressure rated to 125 psi (8.75 bar).
- Cap, sump and top-seated o-rings compress to provide leak proof sealing.
- NSF Standard 42 certified (FH4200WW14, FH4200BB14, FH4200WW34).



ANSI / NSF 42
CERTIFIED
FH4200WW14
FH4200WW34
FH4200BB14

Dimensions



Model	Size	A	B	C	D	E	F	G	H
500 Series	5"	4.28"	1.57"	1.18"	0.16"	X	5.7"	7.0"	7.5"
4000 Series	10"	4.72"	1.57"	1.18"	1.18"	X	10.5"	11.0"	11.8"
4200 Series	10"	4.72"	1.57"	1.18"	1.18"	X	10.5"	11.0"	11.8"
7000 Series	20"	4.72"	1.57"	1.18"	1.18"	X	20.47"	21.26"	22.8"
4500 Series	10"	5.35"	2.22"	2.28"	0.23"	X	10.43"	11.49"	12.5"
8000 Series	20"	5.35"	2.22"	2.28"	0.23"	X	20.47"	21.26"	22.8"
Full-Flow (B-B)	10"	7.28"	3.03"	3.03"	0.275"	X	11.33"	11.57"	14.0"
Full-Flow (B-B)	20"	7.28"	3.03"	3.03"	0.275"	X	21.25"	21.65"	24.0"

x = Depends on size of pipe fitting selected

Types & Models



Residential Series
4200 (10") & 7000 (20")



Commercial Series
4500 (10") & 8000 (20")



Full-Flow (B-B) Series
5000 (10") & 10000 (20")



Valve-In-Head
Opaque & Clear



High Temp
4500HT (10") & 8000HT (20")



Virgin Polypro
DOE & "222"



White

Black



Blue / Black



Clear

Specifications

Material, sumps & caps	FDA grade polypropylene.
Material, o-rings	EPDM is standard; Viton is available as a spare part.
Maximum temperature (standard)	125° F (52°C)
Maximum temperature (high temp)	200°F (93°C)
Minimum temperature	40°F (4°C)
Maximum pressure (standard)	125 psi (8.75 bar)
Maximum pressure (full flow)	90 psi (6.3 bar)
Burst test	Tested to 500 psi. (150,000 cycles from 0 to 125 psi)

Plastic Filter Housings

5" Clear And Opaque Housings

Model Number	Size	PR	Sump	Cap	Pipe Size	No./ case	Shipping Wt. (Lbs.)	Carton Size (")
FH500WW14	5"	No	White	White	1/4"	12	18	19x14x8
FH500WW12	5"	No	White	White	1/2"	12	18	19x14x8
FH500CW14	5"	No	Clear	White	1/4"	12	19	19x14x8
FH500CW12	5"	No	Clear	White	1/2"	12	19	19x14x8



Clear Housings

Model Number	Size	PR	Sump	Cap	Pipe Size	No./ case	Shipping Wt. (Lbs.)	Carton Size (")
10" Residential								
FH4200CW14	10"	No	Clear	White	1/4"	12	31	19x14x13
FH4200CW14PR	10"	Yes	Clear	White	1/4"	12	31	19x14x13
FH4200CW38	10"	No	Clear	White	3/8"	12	31	19x14x13
FH4200CW38PR	10"	Yes	Clear	White	3/8"	12	31	19x13x14
FH4200CW12	10"	No	Clear	White	1/2"	12	31	19x14x13
FH4200CW12PR	10"	Yes	Clear	White	1/2"	12	31	19x14x13
FH4200CW34	10"	No	Clear	White	3/4"	12	31	19x14x13
FH4200CW34PR	10"	Yes	Clear	White	3/4"	12	31	19x13x14

10" Commercial clear

HD4500CB34	10"	No	Clear	Black	3/4"	12	38	22x17x13
HD4500CB34PR	10"	Yes	Clear	Black	3/4"	12	38	22x17x13

20" Commercial clear

FH8000CB34PR	20"	Yes	Clear	Black	3/4"	6	33	18x12x24
--------------	-----	-----	-------	-------	------	---	----	----------

10" Full-Flow (BB) clear

FH5000CB1PR	10"	Yes	Clear	Black	1"	4	34	16x16x14
-------------	-----	-----	-------	-------	----	---	----	----------



Valve-In-Head Housings (three function valve with flow, shut-off & by-pass)

Model Number	Size	PR	Sump	Cap	Pipe Size	No./ case	Shipping Wt. (Lbs.)	Carton Size (")
VIH34APC-NP-SS	10"	No	Clear	White	3/4"	12	37	20x17x14

Plastic Filter Housings



Natural Polypropylene Housings (ideal for high purity water)

Model Number	Size	PR	Sump	Cap	Pipe Size	No./ case	Shipping Wt. (Lbs.)	Carton Size (")
FH4200NP34	10"	No	NP	NP	3/4"	12	24	19x14x13
FH8000NP34	20"	No	NP	NP	3/4"	6	29	18x12x24
FH8000NP34-222	20"	No	NP	NP	3/4"	6	29	18x12x24



All White Housings

Model Number	Size	PR	Sump	Cap	Pipe Size	No./ case	Shipping Wt. (Lbs.)	Carton Size (")
FH4200WW14	10"	No	White	White	1/4"	12	24	19x14x13
FH4200WW38	10"	No	White	White	3/8"	12	24	19x14x13
FH4200WW12	10"	No	White	White	1/2"	12	24	19x14x13
FH4200WW12PR	10"	Yes	White	White	1/2"	12	24	19x14x13
FH4200WW34	10"	No	White	White	3/4"	12	24	19x14x13
FH7000WW38	20"	No	White	White	3/8"	6	26	17x12x24
FH7000WW38PR	20"	Yes	White	White	3/8"	6	26	17x12x24
FH8000WW34PR	20"	Yes	White	White	3/4"	6	33	18x12x24
FH5000WW1PR	10BB	Yes	White	White	1"	4	22	16x16x14
FH5000WW15PR	10BB	Yes	White	White	1-1/2"	4	22	16x16x14
FH10000WW1PR	20BB	Yes	White	White	1"	4	35	16x16x26
FH10000WW15PR	20BB	Yes	White	White	1-1/2"	4	35	16x16x26

Plastic Filter Housings



High-Temp Housings (rated for temperatures to 200°F (93°C))

Model Number	Size	PR	Sump	Cap	Pipe Size	No./ case	Shipping Wt. (Lbs.)	Carton Size (")
HD4500HT34	10"	No	Red	Red	3/4"	12	50	22x17x13
FH8000HT34	20"	No	Red	Red	3/4"	12	44	18x12x24



All Black Housings

Model Number	Size	PR	Sump	Cap	Pipe Size	No./ case	Shipping Wt. (Lbs.)	Carton Size (")
FH4200BB14	10"	No	Black	Black	1/4"	12	24	19x14x13
FH4200BB34	10"	No	Black	Black	3/4"	12	24	19x14x13
HD4500BB34PR	10"	Yes	Black	Black	3/4"	12	38	22x17x13
FH8000BB34PR	20"	Yes	Black	Black	3/4"	6	33	18x12x24
FH5000BB1PR	10BB	Yes	Black	Black	1"	4	22	16x16x14
FH10000BB1PR	20BB	Yes	Black	Black	1"	4	35	16x16x26

10" Residential Blue / Black Housings

Model Number	Size	PR	Sump	Cap	Pipe Size	No./ case	Shipping Wt. (Lbs.)	Carton Size (")
FH4200BL14	10"	No	Blue	Black	1/4"	12	24	19x14x13
FH4200BL14PR	10"	Yes	Blue	Black	1/4"	12	24	19x14x13
FH4200BL38	10"	No	Blue	Black	3/8"	12	24	19x14x13
FH4200BL38PR	10"	Yes	Blue	Black	3/8"	12	24	19x13x13
FH4200BL12	10"	No	Blue	Black	1/2"	12	24	19x14x13
FH4200BL12PR	10"	Yes	Blue	Black	1/2"	12	24	19x14x13
FH4200BL34	10"	No	Blue	Black	3/4"	12	24	19x14x13
FH4200BL34PR	10"	Yes	Blue	Black	3/4"	12	24	19x13x13

Plastic Filter Housings

20" Residential Blue / Black Housings

Model Number	Size	PR	Sump	Cap	Pipe Size	No./ case	Shipping Wt. (Lbs.)	Carton Size (")
FH7000BL38	20"	No	Blue	Black	3/8"	6	26	17x12x24
FH7000BL12	20"	No	Blue	Black	1/2"	6	26	17x12x24
FH7000BL12PR	20"	Yes	Blue	Black	1/2"	6	26	17x12x24



10" Commercial Blue / Black Housings

Model Number	Size	PR	Sump	Cap	Pipe Size	No./ case	Shipping Wt. (Lbs.)	Carton Size (")
HD4500BL34	10"	No	Blue	Black	3/4"	12	38	22x17x13
HD4500BL34PR	10"	Yes	Blue	Black	3/4"	12	38	22x17x13

20" Commercial Blue / Black Housings

Model Number	Size	PR	Sump	Cap	Pipe Size	No./ case	Shipping Wt. (Lbs.)	Carton Size (")
FH8000BL34	20"	No	Blue	Black	3/4"	6	33	18x12x24
FH8000BL34PR	20"	Yes	Blue	Black	3/4"	6	33	18x12x24



10" Full-Flow (B-B) Housings

Model Number	Size	PR	Sump	Cap	Pipe Size	No./ case	Shipping Wt. (Lbs.)	Carton Size (")
FH5000BL34PR	10"	Yes	Blue	Black	3/4"	4	22	16x16x14
FH5000BL1	10"	No	Blue	Black	1"	4	22	16x16x14
FH5000BL1PR	10"	Yes	Blue	Black	1"	4	22	16x16x14
FH5000BB1PR	10"	Yes	Black	Black	1"	4	22	16x16x14
FH5000BL15	10"	No	Blue	Black	1-1/2"	4	22	16x16x14
FH5000BL15PR	10"	Yes	Blue	Black	1-1/2"	4	22	16x16x14
FH5000WW1PR	10"	Yes	White	White	1"	4	22	16x16x14
FH5000WW15PR	10"	Yes	White	White	1-1/2"	4	22	16x16x14
FH5000CB1PR	10"	Yes	Clear	Black	1"	4	34	16x16x14

Plastic Filter Housings



20" Full-Flow (B-B) housings

Model Number	Size	PR	Sump	Cap	Pipe Size	No./ case	Shipping Wt. (Lbs.)	Carton Size (")
FH10000BL34PR	20"	Yes	Blue	Black	3/4"	4	35	16x16x26
FH10000BL1	20"	No	Blue	Black	1"	4	35	16x16x26
FH10000BL1PR	20"	Yes	Blue	Black	1"	4	35	16x16x26
FH10000BB15PR	20"	Yes	Black	Black	1-1/2"	4	35	16x16x26
FH10000BL15	20"	No	Blue	Black	1-1/2"	4	35	16x16x26
FH10000BL15PR	20"	Yes	Blue	Black	1-1/2"	4	35	16x16x26
FH10000WW1PR	20"	Yes	White	White	1"	4	35	16x16x26
FH10000WW15PR	20"	Yes	White	White	1-1/2"	4	35	16x16x26

Wrenches

Part Number	For Housing Series	Material	Color	No. Per Package
WR100	500, 4000, 4200, 7000	Polypropylene	White	100
WR200	4500 & 8000	Polypropylene	White	100
WR500	5000 & 10000	Polypropylene	Black	90
WR-APC	VIH housing only	Polypropylene	White	100

O-Rings

Part Number	For Housing Series	Material	No. Per Package
OR1W	SS-1000	EPDM	10
OR4	500, 4000, 4200, 7000	EPDM	10
OR4V	500, 4000, 4200, 7000	Viton	10
OR5	5000 & 10000	EPDM	10
OR5V	5000 & 10000	Viton	10
OR8	4500 & 8000	EPDM	10
OR8V	4500 & 8000	Viton	10

Mounting Brackets



FM-10 & FM10W
(For 500, 4200 & 7000)



FM-20
(For 4500 & 8000)



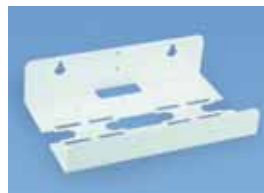
FM25A
(For 5000 & 10000)



FM-30
(500, 4000, 4200, 7000)



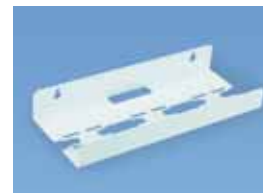
FM-35
(For 5000 & 10000)



FM-40
(For 500, 4200, 7000)



FM-50
(For 500, 4200, 7000)



FM-60
(For 500, 4200, 7000)

Brackets

Part Number	Housing Series	Number	Type	Material	No. Per Pkg.
FM10 (w/screws)	500, 4000, 4200, 7000	Single	Steel	Zinc plated	150
FM15	Valve-In-Head	Single	Steel	Zinc Plated	10
FM20	4500, 8000	Single	Steel	White	100
FM30	500, 4000, 4200, 7000	Double	Steel	White	30
FM40	500, 4000, 4200, 7000	Double	Steel	White	24
FM50	500, 4000, 4200, 7000	Triple	Steel	White	25
FM60	500, 4000, 4200, 7000	Triple	Steel	White	25
FM-10AW	500, 4000, 4200, 7000	Single	Aluminum	White	150
FM-20AW	4200, 4500, 8000	Single	Aluminum	White	100
FM-25A	5000, 10000	Single	Aluminum	White	25
FM-25W	5000, 10000	Single	Steel	White	10
FM-30AW	500, 4000, 4200, 7000	Double	Aluminum	White	24
FM-40AW	500, 4000, 4200, 7000	Double	Aluminum	White	24
FM-50AW	500, 4000, 4200, 7000	Triple	Aluminum	White	25
FM-50AB	500, 4000, 4200, 7000	Triple	Aluminum	Black	25
FM-60AW	500, 4000, 4200, 7000	Triple	Aluminum	White	25
FM-80AW	500, 4000, 4200, 7000	Quadruple	Aluminum	White	10
FM-99AW	500, 4000, 4200, 7000	Triple w/pump bkt.	Aluminum	White	20
FM100SS	4500, 8000	Double	Stainless	Stainless	25

Bracket Dimensions

Bracket	Dimensions
FM10 & FM-10W	3-1/2" x 1-5/16" x 2-1/8"
FM20	4-1/2" x 2-1/4" x 3"
FM25	7" x 5-1/2" x 4-1/2"
FM30	2-1/4" x 5-3/4" x 9-1/4" x 1-1/2"
FM40	2-1/4" x 5-3/4" x 9-1/4" x 1-1/2"
FM50	2-1/4" x 5-3/4" x 14-1/8" x 1-1/2"
FM60	2-1/4" x 5-3/4" x 14-1/8" x 1-1/2"

Mounting Screws

Part Number	Housing Series	Number	Length	Material	No. Per Pkg.
MS1012	SS-1000	#10	1/2"	SS	100
MS1034	4000, 4200	#10	3/4"	SS	100
MS1010	4000, 4200 with clip	#10	1"	SS	100
MS1410	4500 & 8000	#14	1"	SS	100
MS0812	For mounting clip	#8	1/2"	SS	100
MS5161	5000 & 10000	5/16	1"	SS	100
GAFFSCREW	WattsBB	5/16	1"	SS	4/pkg.

Watts® Plastic Filter Housings

Top quality, heavy-duty construction



Residential
(Flat top)



Residential
(Standard top)



Commercial
Housing



Full-Flow
(B-B)



10" Big Blue
Clear



20" Big Blue
Clear

Features

- Highly competitive prices
- Top quality, heavy-duty construction
- Performance validated by testing facility
- Wide range of models, colors, pipe fittings
- Watts labels on shipping carton only
- No product labels on individual housings
- Full line of brackets and wrenches
- Stocked for immediate shipment

Specifications

Materials (sumps & caps)	Polypropylene
Materials (o-ring)	EPDM
Max. temp standard housing	125°F (52°C)
Min. temp	40°F (4.4°C)
Max psi, res & com housings	125 psi (8.75 bar)
Max pressure, Full-Flow	90 psi (6.3 bar)
Cycle tests (@125 psi)	150,000 cycles
Threads	Straight

Watts Brand Plastic Housings

10" Residential Housings (flat caps)

Model Number	Size	Pressure Relief	Sump	Cap	Pipe Size	No. / Case	Shipping wt. (lbs.)
W10RPH14WW	10"	No	White	White	1/4"	15	30
W10RPH38WW	10"	No	White	White	3/8"	15	30
W10RPH12WW	10"	No	White	White	1/2"	15	30
W10RPH12CW	10"	No	Clear	White	1/2"	15	30

10" Residential Housings (standard caps)

Model Number	Size	Pressure Relief	Sump	Cap	Pipe Size	No. / Case	Shipping wt. (lbs.)
W10RPH14WWSC	10"	No	White	White	1/4"	15	30
W10RPH14CWSC	10"	No	Clear	White	1/4"	15	30
W10RPH38WWSC	10"	No	White	White	3/8"	15	30

10" Commercial Housings

Model Number	Size	Pressure Relief	Sump	Cap	Pipe Size	No. / Case	Shipping wt. (lbs.)
W10CPH34BLPR	10"	Yes	Blue	Black	3/4"	12	38
W10CPH12CBPR	10"	Yes	Clear	Black	1/2"	12	38
W10CPH34CBPR	10"	Yes	Clear	Black	3/4"	12	38

Watts® Plastic Filter Housings

20" Commercial Housings

Model Number	Size	Pressure Relief	Sump	Cap	Pipe Size	No. / Case	Shipping wt. (lbs.)
W20CPH34BLPR	20"	Yes	Blue	Black	3/4"	12	38

10" Full-Flow Housings (for 9-3/4" x 4-1/2" cartridges)

Model Number	Size	Pressure Relief	Sump	Cap	Pipe Size	No. / Case	Shipping wt. (lbs.)
W10FFPH34BLPR	10 BB	Yes	Blue	Black	3/4"	6	33
W10FFPH1BLPR	10 BB	Yes	Blue	Black	1"	6	33
W10FFPH15BLPR	10 BB	Yes	Blue	Black	1-1/2"	6	33
W10FFPH1WLPR	10 BB	Yes	White	Black	1"	6	33
W10FFPH1CBPR	10 BB	Yes	Clear	Black	1"	6	33

20" Full-Flow Housings (for 20" x 4-1/2" cartridges)

Model Number	Size	Pressure Relief	Sump	Cap	Pipe Size	No. / Case	Shipping wt. (lbs.)
W20FFPH34BLPR	20 BB	Yes	Blue	Black	3/4"	6	52
W20FFPH1BLPR	20 BB	Yes	Blue	Black	1"	6	52
W20FFPH15BLPR	20 BB	Yes	Blue	Black	1-1/2"	6	52
W20FFPH1WLPR	20 BB	Yes	White	Black	1"	6	52
W20FFPH1CBPR	20 BB	Yes	Clear	Black	1"	6	52



Heavy Duty Mounting Brackets

Model Number	Housing Series	Type	Material	Color
WBKT-RCS	Residential & commercial housings	Single	Steel	White
WBKT-RCS-SS	Residential & commercial housings	Single	Steel	Stainless
WBKT-RD	Residential housings	Double	Steel	White
WBKT-RT	Residential housings	Triple	Steel	White
WBKT-CD	Commercial housings	Double	Steel	White
WBKT-CT	Commercial housings	Triple	Steel	White
WBKT-FF-1	Full-Flow housings	Single	Steel	White
WBKT-FF-2	Full-Flow housings	Double	Steel	White
WBKT-FF-3	Full-Flow housings	Triple	Steel	White

Note: Brackets for Watts housings will work with Flowmatic housings. Screws for Watts Big-Blue is P/N GAFFSCREW (4/pkg).

Wrenches For Watts Brand Plastic Housings

Model Number	Housing Series	Material	Color
WW-R	Watts residential housings	Polypropylene	White
WW-C	Watts commercial housings	Polypropylene	White
WW-FF	Watts Full-Flow housings	Polypropylene	White

O-Rings For Watts Brand Plastic Housings

Model Number	Housing Series	Material
WOR-R	Watts residential housings	EPDM
WOR-C	Watts commercial housings	EPDM
WOR-FF	Watts Full-Flow housings	EPDM

Pentek® Filter Housings



Specifications

Max temp. 100F
Max. PSI 10" 100 PSI.
Max PSI 20" 90 PSI

10" Housings

Part Number	Pentek Part No.	Size	Description	Pipe Size	No./Ctn.	Ship Wt. (lbs.)
S7521A	158114	#10	Slim line blue wo/pr	1/4"	12	26
S7521W	158125	#10	Slim line white wo/pr	1/4"	12	22
S7520	158005	#10	Slim line blue w/pr	3/8"	12	26
S7524	158007	#10	Slim line clear w/pr	3/8"	12	22
S7537	158195	#10	Slim blue w/pr	1/2"	12	26
S7537A	158196	#10	Slim blue wo/pr	1/2"	12	26
S7509	150067	#10	Blue w/pr w/mb cap	3/4"	12	38
S7510	150068	#10	Blue wo/pr w/mb cap	3/4"	12	38
S7513	150071	#10	Clear w/pr w/mb cap	3/4"	12	35
S7514	150072	#10	Clear wo/pr w/mb cap	3/4"	12	35

20" Housings

Part Number	Pentek Part No.	Size	Description	Pipe Size	No./Ctn.	Ship Wt. (lbs.)
S7545	150069	#20	Blue w/pr w/mb cap	3/4"	8	38
S7546	150070	#20	Blue wo/pr w/mb cap	3/4"	8	38

10" Big Blue Housings

Part Number	Pentek Part No.	Size	Description	Pipe Size	No./Ctn.	Ship Wt. (lbs.)
S7555A	150237	#10	Big Blue w/pr	1"	6	33
S7557A	150238	#10	Big Blue wo/pr	1"	6	33

20" Big Blue Housings

Part Number	Pentek Part No.	Size	Description	Pipe Size	No./Ctn.	Ship Wt. (lbs.)
S7562A	150233	#20	Big Blue w/pr	1"	4	28
S7563A	150234	#20	Big Blue wo/pr	1"	4	28
S7564A	150235	#20	Big Blue w/pr	1.5"	4	30
S7565A	150236	#20	Big Blue wo/pr	1.5"	4	30

Wrenches and O-Rings



Wrenches

Part Number	Mfg. Part No.	Description	Color	No./Case
FH-WWF	144877	Wrench for 10" & 20" Full Circle	White	1
FH-WWH	PFW190	Wrench for 10" Half Circle	White	1
FH-WWF.A	150295	SW-2 Wrench for 3/4 "Housing	White	1
FH-WWF.A2	150539	SW-1 Wrench for Slim line Housing	Black	1
FH-WWF/3	GTS-231	Wrench "Open" Imprint	White	1
FH-WBFB	150296	SW-3 Wrench 10"BB	Black	1
FH-WBFB2	144368	SW-4 Wrench 20"BB	Grey	1
FH-WWFB	144880	Wrench for Big White 10" & 20"	White	1
FH-WWFB/3	GTS-232	Wrench for Big Blue FH/3	White	1
FH-WWFB/3B	GTS-232B	Wrench for Big Black FH/3	Black	1
MH-WWF/3	-	Membrane Housing Wrench	Black	1

O-Rings

Part Number	Mfg. Part No.	Description	Color	No./Case
FH-ORING	143026	O-Ring For 10" (FH-UFXX) Filter Housing	-	1
FH-ORING-BB	151122	Big Blue O-Ring Round Fits 10" & 20" BB	-	1
FH-ORING-BW	151254	Square O-Ring For Big White & Clear 10" & 20"	-	1
FH-ORING/3BB	-	Big O-Ring For FH/3 10"BB and 20"BB	-	1
FH-ORING/3/04	-	O-Ring For FH/3 Housing 1/4	-	1
FH-ORING-EG	259-130000-EP	EG Series O-Ring For FH-UF1014/EG	-	1

Individually Boxed Plastic Housings

Complete with filter, housing wrench, bracket and mounting screws.



Individually Boxed Filter Housings

We are happy to announce a number of our filter housings are now available, individually boxed and come complete with housing, wrench, bracket and mounting screws. Housings are master packaged; however, the individual boxes are sturdy enough to ship separately in the individual carton.



Individually Boxed Plastic Housings In Master Cartons

Model Number	Housing	Type	Sump	Cap	Wrench	Bracket	Number
HD4500CB34PR-IB	HD4500CB34PR	Commercial	Clear	Black	WR200	FM20	6
VIH34APC-IB	VIH34APC*	Valve-In-Head	Clear	White	WR-APC	FM-15	6
FH5000BL1PR-IB	FH5000BL1PR	Full-Flow (B-B)	Blue	Black	WR500	FM25	4
FH10000BL1PR-IB	FH10000BL1PR	Full-Flow (B-B)	Blue	Black	WR500	FM25	4

*With stainless steel inserts.



SS-4000



SS-1000



CT-4000



APO-CTW

Flowmatic® Counter Top Housings

Part Number	Size	Pipe Size	Sump	Cap	Carton Size	Ship Weight	No./ Case
APCCTW	10"	1/4"	Clear	White	19x14x13	31	12
APOCTW	10"	1/4"	White	White	19x14x13	26	12
CT4000WW14	10"	1/4"	White	White	19x14x13	26	12
SS1000CTPW*	10"	1/4"	White	White	19x14x13	10	12
SS4000VWW	10"	1/4"	White	White	19x14x13	26	12

*Accepts 1/4" candle mount cartridge. All housings have molded threads.

Leak Protector By Watts®

International Patents Pending.



Don't let this happen to your customers!

Protect yourself from potential leaks due to high water pressure, customer issues or installation mishaps.

Leak Protector by Watts® “detects” and “protects”.

This unique Leak Protector by Watts not only detects leaks, it also shuts off flow to a drinking water system in the event a leak should occur. This unique device is a small up-front investment, designed to eliminate possible damage to homes and business property.

How it works!

The patented device is novel, but quite simple. When a leak occurs, the adsorbent applicator “tablet” expands to close the valve and shut off the incoming water supply.

Two tablets are included with each Leak Protector, and replacement tablets are available, packaged two per pack.

Maximum operating pressure = 100 psi
Maximum ambient humidity = 70%

CAUTION:

Keep Leak Protector Replacement Cartridges (pads) out of the reach of children.



Leak Protector



Adsorbent Applicator Pads

Part Number	Description	Qty. Per Case
LPSOV	Leak protector & shut off valve with two applicator tablets (1)	25
LPSOV-PAD	Replacement applicator tablets (package of 2)	2

Leak Protector & Shut-Off Valve by Watts®

*Detects leaks and shuts off automatically when leaks are detected, reducing liability claims.
Ideal for under counter RO and drinking systems!*

Valve Installation

- Step 1** Turn off the water supply to the filtration system at the cold water source valve.
- Step 2** The leak detector should be mounted flat in the lowest ground point near the filtration system so in the event a leak occurs the water will flow in the direction of the valve.
- Step 3** Clean the designated installation area with rubbing alcohol.
- Step 4** Peel the red backing tape from the two mounting feet on the base of the shut off valve and press down firmly over the chosen install area. You may also mount the valve using the screws included in the kit.
- Step 5** Cut the systems water supply tube to splice in the valve. Connect the tubing from the water source valve to the horizontal fitting on the shut off valve labeled “in” by pushing the tubing in firmly until fully seated.
- Step 6** Connect the tubing leading from the filtration system to the vertical fitting on the shut off valve labeled “out” by pushing the tubing in firmly until fully seated.
- Step 7** Turn on the water supply to the filtration unit and check for leaks.



Replacing The Tablet

- Step 1** Turn off the water supply at the cold water valve.
- Step 2** Using a Phillips screwdriver, loosen and remove screw from the top of the valve.
- Step 3** Twist the upper white assembly counter clockwise, lift up and remove old tablet.
- Step 4** Make sure the valve and the surrounding area is dry before replacing the tablet.
- Step 5** Insert the new applicator tablet into the clear plastic housing.
- Step 6** Replace the upper white cap onto the clear plastic base by twisting it clockwise until seated.
- Step 7** Replace Phillips screw and tighten (**do not over tighten as this may damage the valve unit**).
- Step 8** Turn on the water supply to the filtration unit and check for leaks.

CAUTION:
Keep Leak Protector Replacement Cartridges (pads) out of the reach of children.

Part Number: LPSOV
Replacement Pads: LPSOV-PAD