

SECTION 3

Residential Backwashing Filters



WATER QUALITY PRODUCTS
Catalog 10

Watts product specifications in U.S. customary units and metric are approximate and are provided for reference only. Watts reserves the right to change or modify product design, construction, specifications or materials without prior notice and without incurring any obligation to make such changes and modifications on Watts products previously or subsequently sold.

Filox™ Backwashing Filters with CK10 Valves and Vortech Tanks

Whole House Filters For Iron, Hydrogen Sulfide And Manganese.

Iron, Manganese and Hydrogen Sulfide are common elements found in your water and can be a nuisance causing stains in sinks, bathtubs, toilets, driveways and even the side of your house. In addition Iron, Manganese and Hydrogen Sulfide release unpleasant odors and tastes to your water supply. FILOX™, a non-chemical oxidizing media is the answer to these water problems.

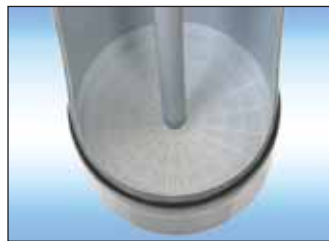
System Advantages

- Highest flow rate of any Iron removal media.
- No oxidizing chemicals needed for regeneration.
- High efficiency with minimum of 80% Manganese dioxide for enhanced performance and capacity.
- Effective, from 5.0 to 9.0 pH.
- System is easy to program, with 10 pre-programmed regeneration cycles to optimize water treatment.
- May require additional oxidizing agents depending on water conditions.
- 10 year warranty on tank.
- 5 year warranty on valve.
- Made in USA.



Standard Mineral Tank

Standard tanks use gravel under bedding, which adds weight and cost. Also, re-bedding is more difficult, should riser tubes pull out of the gravel bed.



Vortech™ Mineral Tank

No gravel under bedding is required, reducing weight and cost. Also, riser tubes are permanently attached, so they cannot pull out during re-bedding.



NOTE: The use of chemicals and oxidizers, such as chlorine potassium permanganate and oxygen may be required to provide the optimal treatment for Iron, Hydrogen Sulfide and Manganese.

Models

Model No.	Valve	Mineral Tank Size	Media Cubic Ft.	Gravel (Lbs)	Service Flow (GPM)	Drop (PSI)	Back Wash (GPM)	Floor Space LxWxH
NF09-W100F	Time clock	9X48	1	None	6	< 15	5.3	16X10X55
NF10-W100F	Time clock	10X54	1.5	None	9	< 15	7.5	16X11X62
NF12-W100F	Time clock	12X52	2	None	12	< 15	10	17X13X60
NF14-W100F	Time clock	14X65	3	None	18	< 15	15	18X15X74
NF16-W100F	Time clock	16X65	4	None	24	< 15	20	20X17X74

Iron Filters with CK10 Valves & Standard Tanks

Whole House Filters For Iron And Manganese Reduction.

Iron is one of the most common elements found in nature, and most ground waters contain a measurable amount of iron. Iron stains bathtubs, toilets, sinks, driveways and it will even stain the side of your house in sufficient concentrations. We offer two media types to remove Iron in point-of-entry applications.

Two Media Types

FILOX™

A non-chemical oxidizing media to reduce Iron.

Greensand-Plus™

An enhanced version of the traditional medium to remove Iron from water.

Filox™ System Advantages

- Highest flow rate of any Iron removal media.
- No oxidizing chemicals needed for regeneration.
- High efficiency with 80% Manganese dioxide for enhanced performance and capacity.
- Effective from 5.0 to 9.0 pH.
- System is easy to program, with 10 pre-programmed regeneration cycles to optimize water treatment.

Greensand-Plus™ System Advantages

- Lower backwash requirements.
- Known saturation capacity.
- Higher temperatures and differential pressures than traditional Manganese Greensand.
- Greensand-Plus is also used for radium reduction.
- User friendly, low maintenance electronic time clock valve.



Note:

The use of chemicals and oxidizers, such as chlorine, potassium permanganate and oxygen may be required for both systems to provide the optimal treatment for Iron, Hydrogen Sulfide and Manganese.

Filox™ Models

Part No.	Valve	Mineral Tank Size	Media Cubic Ft.	Gravel (Lbs)	Service Flow (GPM)	Drop (PSI)	Back Wash (GPM)	Floor Space LxWxH
NF09-CK10F	Timeclock	9X48	1	10	6	< 15	5.3	16X10X55
NF10-CK10F	Timeclock	10X54	1.5	10	9	< 15	7.5	16X11X62
NF12-CK10F	Timeclock	12X52	2	20	12	< 15	10	17X13X60
NF14-CK10F	Timeclock	14X65	3	40	18	< 15	15	18X15X74
NF16-CK10F	Timeclock	16X65	4	50	24	< 15	20	20X17X74
NF21-CK10F	Timeclock	21X62	5	100	27	< 15	25	22X23X70

Greensand Plus™ Models

Part No.	Valve	Mineral Tank Size	Media Cubic Ft.	Gravel (Lbs)	Service Flow (GPM)	Drop (PSI)	Back Wash (GPM)	Floor Space LxWxH
NGP09-CK10F	Timeclock	9X48	1	10	3	< 15	5.3	16X21X55
NGP10-CK10F	Timeclock	10X54	1.5	10	4	< 15	7.5	16X22X62
NGP12-CK10F	Timeclock	12X52	2	20	5	< 15	10	17X24X60
NGP14-CK10F	Timeclock	14X65	3	40	6	< 15	12	18X33X74
NGP16-CK10F	Timeclock	16X65	4	50	7	< 15	20	20X35X74

Backwashing Filters For Sediment

Whole House Filters For Sediment Reduction With High Efficiency Micro-Z™ Filter Media

Our filtration systems for sediment use high performance Micro-Z filter media to provide increased loading capability and higher service flow rates. Micro-Z's unique Zeolite structure offers increased porosity to outperform conventional sand filters by reducing water consumption. The need to backwash is dramatically reduced!

Features & Benefits

- Uses Micro-Z™ for increased solids loading.
- Unique structure allows for higher flow rates.
- Reduces water consumption because the need to backwash is dramatically reduced.
- Reliable equipment, designed for long-term service



Models With Standard Tanks

Part Number	Valve	Mineral Tank Size	Media Cubic Ft.	Gravel (Lbs)	Service Flow (GPM)	Drop (PSI)	Back Wash (GPM)	Floor Space LxWxH
NM09-CK10F	Timeclock	9X48	1	10	5/9	< 15/25	5.3	16X10X55
NM10-CK10F	Timeclock	10X54	1.5	10	7/10	< 15/25	7.5	16X11X62
NM12-CK10F	Timeclock	12X52	2	20	9/15	< 15/25	11	17X13X60
NM14-CK10F	Timeclock	14X65	3	40	13/21	< 15/25	15	18X15X74
NM16-CK10F	Timeclock	16X65	4	50	17/28	< 15/25	25	20X17X74

Models With Vortech™ Tanks

Part Number	Valve	Mineral Tank Size	Media Cubic Ft.	Gravel (Lbs)	Service Flow (GPM)	Drop (PSI)	Back Wash (GPM)	Floor Space LxWxH
NM09-W100F	Timeclock	9X48	1	None	5/9	< 15/25	5.3	16X10X55
NM10-W100F	Timeclock	10X54	1.5	None	7/10	< 15/25	7.5	16X11X62
NM12-W100F	Timeclock	12X52	2	None	9/15	< 15/25	11	17X13X60
NM14-W100F	Timeclock	14X65	3	None	13/21	< 15/25	15	18X15X74
NM16-W100F	Timeclock	16X65	4	None	17/28	< 15/25	25	20X17X74

Backwash Filters with GAC and CK10 Valves



Whole House Filters For Chlorine, Taste, Odor And Sediment Reduction.

Our activated carbon filters are highly popular because they correct a wide range of water quality problems by removing chlorine, tastes, odors and sediment.

Benefits

- Great tasting water from every tap in your house!
- No bad tastes
- No foul odors
- Crystal clear water for drinking, bathing and cooking!
- User-friendly equipment.
- Low maintenance due to automatic operation.

Models With Standard Tanks

Part Number	Valve	Mineral Tank Size	Media Cubic Ft.	Gravel (Lbs)	Service Flow (GPM)	Drop (PSI)	Back Wash (GPM)	Floor Space LxWxH
NC09-CK10F	Timeclock	9X48	1	None	4	< 15	4.2	16X10X55
NC10-CK10F	Timeclock	10X54	1.5	None	6	< 15	5.3	16X11X62
NC12-CK10F	Timeclock	12X52	2	None	8	< 15	7.5	17X13X60
NC14-CK10F	Timeclock	14X65	3	None	11	< 15	10	18X15X74
NC16-CK10F	Timeclock	16X65	4	None	14	< 15	11	20X17X74
NC21-CK10F	Timeclock	21X62	5	None	20	< 15	25	22X23X70

Models With Vortech™ Standard Tanks

Part Number	Valve	Mineral Tank Size	Media Cubic Ft.	Gravel (Lbs)	Service Flow (GPM)	Drop (PSI)	Back Wash (GPM)	Floor Space LxWxH
NC09-W100F	Timeclock	9X48	1	None	4	< 15	4.2	16X10X55
NC10-W100F	Timeclock	10X54	1.5	None	6	< 15	5.3	16X11X62
NC12-W100F	Timeclock	12X52	2	None	8	< 15	7.5	17X13X60
NC14-W100F	Timeclock	14X65	3	None	11	< 15	10	18X15X74
NC16-W100F	Timeclock	16X65	4	None	14	< 15	11	20X17X74
NC21-W100F	Timeclock	21X62	5	None	20	< 15	25	22X23X70

Backwashing Filters with Fleck Valves



Fully assembled backwashing filters with activated carbon and MicroZ™

Backwashing filters come with Fleck valves and various options, so you can select the filter best suited for your application!

Specifications

Valves	Fleck
Valve type	Time clock
Pipe size	3/4" and 1"(see below).
By-pass	(See below).
Mineral tanks	Corrosion resistant FRP. NSF.
Media	Various (see below)

Backwashing Filters With Activated Carbon For Taste, Odor And Chlorine Reduction

Part Number	Valve	Valve Number	Pipe Size	Tank	Carbon (Cu. Ft.)	Size By-Pass	Service Flow (GPM)	Ship Wt. (lbs)
N2050D	Fleck	F5600	3/4"	9X48	1	3/4" SS	4.5	90
N2050	Fleck	F2510	3/4"	9X48	1	3/4"	4.5	90
N2051	Fleck	F2510	3/4"	10X54	1.5	3/4"	5.4	105
N2052	Fleck	F2510	3/4"	12X52	2	3/4"	7.8	117
N2051-1	Fleck	F2750	1"	10X54	1.5	None	5.4	90
N2052-1	Fleck	F2750	1"	12X52	2	None	7.8	105

Backwashing Filters With MicroZ™ Media For Sediment Reduction

Part Number	Valve	Valve Number	Pipe Size	Tank	Carbon (Cu. Ft.)	Size By-Pass	Service Flow (GPM)	Ship Wt. (lbs)
N5245-09	Fleck	F2750	1"	9x48	1	None	5	110
N5245-10	Fleck	F2750	1"	10x54	1.5	None	7	140
N5245-12	Fleck	F2750	1"	12x52	2	None	9	167

Neutralizers

Part Number	Valve	Valve Number	Pipe Size	Tank	Media (Cu. Ft.)	Backwash (GPM)	Service Flow (GPM)	Ship Wt. (lbs)
N2070	Neutralizer	F2510	3/4"	9x48	1	3	4	165
N2070-56	Neutralizer	F5600	3/4"	9X48	1	4	4	130

NX Series Backwashing Filters - No Media



NX Series Backwashing Filters

Our popular backwashing filter systems are now available without media. The NX series come complete with control valve, bypass, riser tube, and gravel.

- Add your “Special” media or blend that works best for your customers.
- Save on Shipping!
- Reduce your inventory.
- Complete backwashing system just add media!

Models

Part No.	Valve	Mineral Tank Size	Media Cubic Ft.	Gravel (Lbs)	Tank	Drop (PSI)	Back Wash (GPM)	Floor Space LxWxH
NX09-CK10F	Timeclock	9X48	1	10	Black	1" PVC	5.3	16X10X55
NX10-CK10F	Timeclock	10x54	1.5	10	Black	1" PVC	7.5	16X11X62
NX12-CK10F	Timeclock	12X52	2	20	Black	1" PVC	10	17X13X60
NX14-CK10F	Timeclock	14X65	3	40	Black	1/4" - 1 1/2"*	15	18X15X74
NX16-CK10F	Timeclock	16X65	4	50	Black	1/4" - 1 1/2"*	20	20X17X74
NX21-CK10F	Timeclock	21X62	5	100	Natural	1/4" - 1 1/2"*	25	22X23X70

Note: Service flow rates and pressure drops will dependent upon media selected. *Sweat.

Ready-To-Ship Filters

Activated carbon & Iron Reduction Filters

Just landed an order and need shipment immediately?

These models are in stock, ready to roll!



Specifications

Valve: CK-10
Type: Time clock
Pipe size: 3/4" to 1" tail pieces
Mineral tanks: Black tanks are standard

Filox® Iron Reduction Systems With Three Button CK10 Valves

Model Number	Service Flow Rate	Filox Cu. Ft.	Mineral Tank Size	MINERAL TANK COLOR	Floor Space Requirement	Drop PSI	Back Wash (GPM)	Gravel (Lbs.)	Max. Per Pallet
FILOX100	6 GPM	1.0	9X48	Black	16x10x55	<15	5.3	10	6
FILOX150	9 GPM	1.5	10x54	Black	16x11x62	<15	7.5	10	6

Note: All valves come with 3/4" / 1" tail pieces; mineral tanks are standard with gravel underbedding.

Carbon Systems For Chlorine, Taste & Odor Reduction With Three Button CK10 Valves

Model Number	Service Flow Rate	Filox Cu. Ft.	Mineral Tank Size	MINERAL TANK COLOR	Floor Space Requirement	Drop PSI	Back Wash (GPM)	Gravel (Lbs.)	Max. Per Pallet
CARBON100	4 GPM	1.0	9X48	Black	16x10x55	<15	4.2	10	6
CARBON150	6 GPM	1.5	10x54	Black	16x11x62	<15	5.3	10	6

Note: All valves come with 3/4" / 1" tail pieces; mineral tanks are standard with gravel underbedding.

WATER FILTER LIMITED WARRANTY

This product shall be free from defects in material and workmanship at the time of installation, where originally installed. The warranty period begins on the installation date, but shall not begin later than six (6) months from the date of manufacture. Components showing unmistakable signs of defects in materials or workmanship will be repaired or replaced without charge and returned, freight prepaid. The Distributor does not accept any liability, or warranty related issues for this equipment due to misapplication, the lack of/ or incorrect pretreatment.

There is a 10-year warranty on fiberglass tanks up to 13" in diameter, 5-year on 14" and larger, 2-year on vinylester tanks; 1-year on steel tanks; 5-year on salt tank; 5-year on control valve; 1-year on valve nest and controls; 1-year on component material and workmanship. Water softener resins subjected to iron, manganese, and chlorine levels greater than 1 ppm are expressly not covered by this warranty. Manganese greensand media and expendable medias such as, activated carbon, Filox™ and neutralizing media are not covered by this warranty.

Filters, membrane elements and flow restrictors that become fouled or plugged due to excessive turbidity, dissolved solids, or microorganisms are not covered by this warranty or any other implied or expressed warranty.

Labor and site visits are not included. Warranty is limited to repair or replacement of defective part (manufacturer's choice). Freight and shipping are not covered by this warranty. Return Goods Authorization (RGA) required for all returns. Collect freight returns will not be accepted.

This limited warranty does not cover failure in service due to fire, freezing, abuse, shipping damages, misapplication, water hammer, sunlight damage, high temperature failure (i.e. hot water back up), improper electrical connection or hi/low voltage, nor does it extend to consequential damages such as water damage, or salt damage.

Softener/Filter: _____

Model Number: _____

Serial Number: _____

Dealer: _____

Address: _____

City/Town: _____ State: _____ Zip: _____

Date of Purchase: _____

Date Installed: _____