

## For Residential and Commercial Snow Melt Applications

Job Name \_\_\_\_\_  
 Job Location \_\_\_\_\_  
 Engineer \_\_\_\_\_  
 Approval \_\_\_\_\_

Contractor \_\_\_\_\_  
 Approval \_\_\_\_\_  
 Contractor's P.O. No. \_\_\_\_\_  
 Representative \_\_\_\_\_

# ProMelt® PM-DP Display Panel

## Remote control panel

The PM-DP provides direct remote operation for the PM-2B, PM-5, PM-224, and PM-824 snow sensor. Users can monitor both the operating mode and the activation state of the sensor. Additional control features include setting automatic, manual, or standby operation.

## Specifications

<b>Supply Voltage</b>	Derived from Snow Sensor
<b>Compatible Sensors</b>	PM-2B PM-5 PM-224 PM-824
<b>Operating Temperature Range</b>	-40°F (-40°C) to 185°F (85°C)
<b>Modes</b>	Automatic Manual Standby
<b>Dry Cycle Time</b>	Based on Sensor Setting
<b>Location Used</b>	Indoor
<b>Wiring Type</b>	22 AWG (minimum) 5 or 6 Conductor
<b>Maximum Distance</b>	800 ft. (243.8 m)

## Features

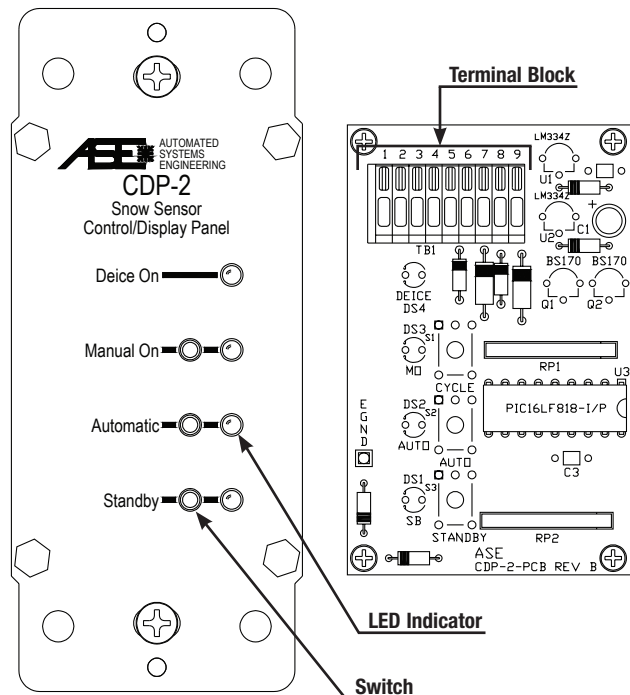
The PM-DP offers the ability to monitor or operate the snow melting system from a remote location.

Function	Feature
Standby	Set snow sensor to ignore precipitation
Automatic	Automatically activates snow melt system based on sensor settings for temperature, precipitation, and run time
Manual	Will activate the snow melt system for the "dry cycle" time determined by the sensor. Will automatically return to Automatic mode upon completion

The corresponding LED will blink, indicating operation, instead of remaining constant.

### ⚠ CAUTION

This Engineering Sheet is not intended to provide full installation instructions and safety information. In order to avoid property damage or injury, please refer to the complete installation manual and product safety information provided with the product.



PM-DP fits directly into a single gang box and can be fitted with a standard "modular" electrical cover plate. A CS-1 pigtail is included with the PM-DP.

**⚠ WARNING: General Safety Instructions**

- THIS UNIT SHOULD BE INSTALLED ONLY BY QUALIFIED PERSONNEL!**
- Disconnect all power from the control before opening the front cover plate.

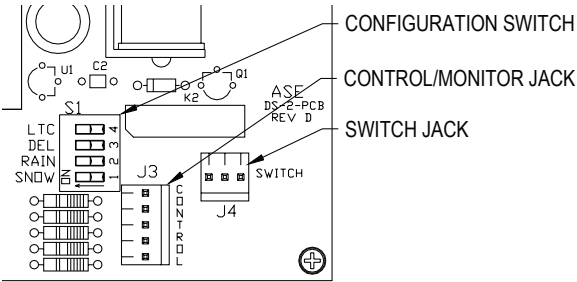
✓	Description	Order #
	PM-DP Remote Control	81012641

**WattsRadiant™**  
Floor Heating & Snow Melting

Watts Radiant product specifications in U.S. customary units and metric are approximate and are provided for reference only. For precise measurements, please contact Watts Radiant Technical Service. Watts Radiant reserves the right to change or modify product design, construction, specifications, or materials without prior notice and without incurring any obligation to make such changes and modifications on Watts Radiant products previously or subsequently sold.

## Installation Parameters

Install the PM-DP remote switch in a single gang box. The PM-DP may be installed in a conventional single or multi-gang electrical enclosure. If installed in a multi-gang enclosure next to high voltage equipment, the PM-DP and its interconnecting cable must be isolated from high voltage wires and devices. Consult local electrical codes to determine the isolation method(s) required. The PM-DP can be installed up to 800 feet away from the snow sensor.



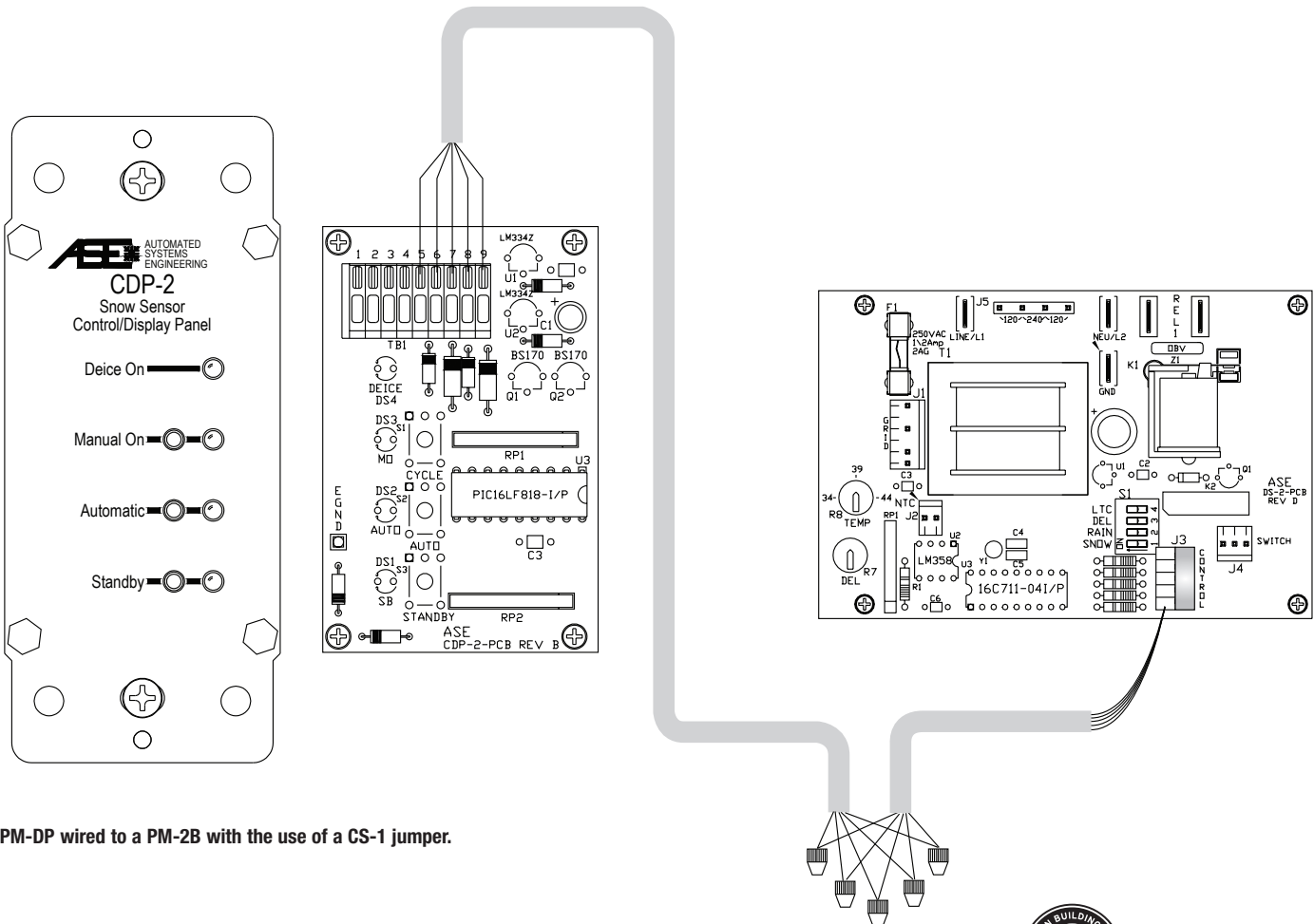
Plug the CS-1 Pigtail into the jack labeled J3 on the snow sensor circuit board. Cut the required length of 5- or 6-conductor minimum 22 AWG shielded cable. Prepare both ends of this cable by removing 2 inches of outer jacket and shield, then strip 1/4" (6.4 mm) of the insulation from the conductors. Attach one end of this cable to the free end of the CS-1 Pigtail, noting any color code change in the table.

CS-1 Color	Function	Field Color	Terminal No.
Black	Manual On		5
White	Return		6
Green	Standby/Reset		7
Orange	Deice On		8
Red	Deice On		9

Following this table, attach the other end of this cable to the terminal block labeled TB1 on the PM-DP. To do this, press the clamp button on the terminal block, insert the bare wire end, then release. Lightly tug on the wire to ensure it is connected.

Use terminals 1-4 on TB1 when connecting to a Home Automation System (HAS). Closure of terminals 1-2 (Trigger) and 3-4 (Enable) will start one snowmelting cycle. Once the cycle is completed the sensor will revert to Automatic mode.

Connect a toggle switch to the Enable terminals to allow manual enabling and disabling of the HAS. If a secondary toggle switch is not used, jumper terminals 3-4 to all the HAS to enable the system as needed.



PM-DP wired to a PM-2B with the use of a CS-1 jumper.

**WattsRadiant**<sup>™</sup>  
Floor Heating & Snow Melting

A Watts Water Technologies Company



**ISO 9001-2008**  
CERTIFIED

USA: Springfield, MO • Tel. (800) 276-2419 • Fax: (417) 864-8161 • www.wattsradiant.com  
Canada: Burlington, ONT. • Tel. (905) 332-4090 • Fax: (905) 332-7068 • www.watts.ca