

For Residential, Light Commercial, and Snow Melt Applications

Job Name _____

Contractor _____

Job Location _____

Approval _____

Engineer _____

Contractor's P.O. No. _____

Approval _____

Representative _____

HydroNex® DMix Panel

Sizes: 1-1/4" Trunk; 3/4" Zone; 1" Common Return

Mix panels utilize a 1" mix valve (Cv = 3.2) to provide basic mixing for radiant systems. Each supply line is 3/4". All supplies share a common 1" return

When selecting a mix valve panel, the following guidelines should be followed:

- Make sure all zones fall within a 10 degree required temperature range. (i.e. 110, 114, 118 supply temperature requirements can be grouped from a single mix valve).
- Make sure the combined flow rates of the selected zones do not exceed the allowable Cv rating of the mix valve.

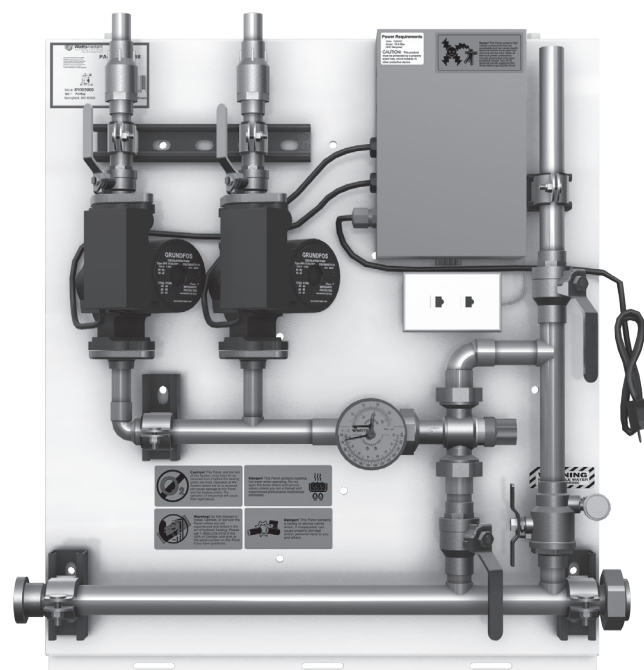
Installation Parameters

Make sure an electrical outlet is within 3 feet of where the DMix panel will mount. If there are no outlets, one will need to be added.

Install and level Z-Bracket with 1/4" x 2-1/2" lag screw to studs. Make sure the Z-Bracket is the correct size for the given DMix panel. Incorrect Z-Brackets may interfere with cover placement.

Hang the DMix panel on the Z-Bracket. Lag screws should be added to the bottom of the panel, further securing the panel to the wall. Hang cover from top down.

In order to avoid property damage, injury, and/or death, please refer to the complete installation manual and warnings provided with the product.



Features

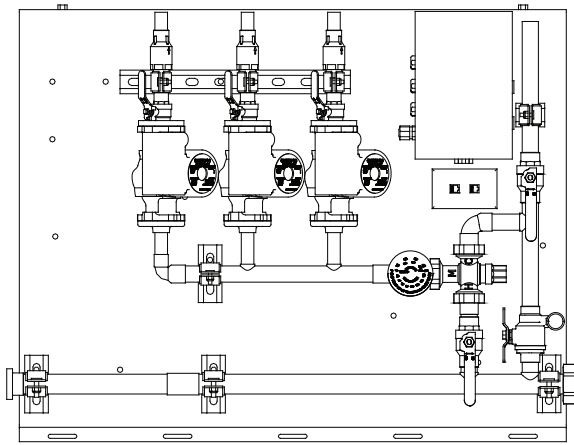
Wall mounted white powder coated back panel and cover
Easy access to all components
Pre-wired circulators and controls
Simple CAT-5 jump wiring to connect panels
O-Ring sealed, threaded union connection between panels
Integrated leveling system
Z-Bracket for simplified mounting

Specifications

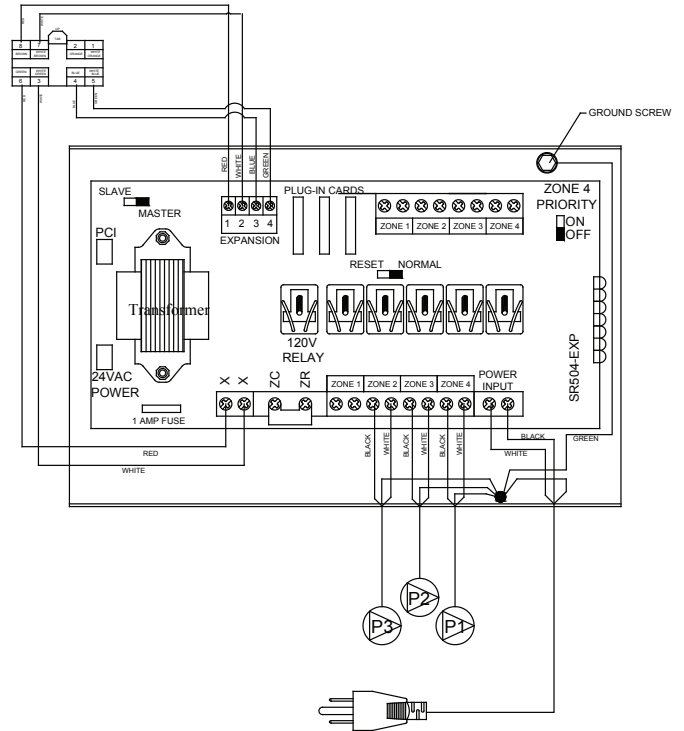
Supply Voltage	120 Volts
Circulator Type	Watts Radiant 15-58 Taco 007 Bell and Gossett NRF-22
Electrical	Relay and CAT-5 Connection
Mix Valve Cv	3.2 gpm
Mix Valve Temperature Range	100°F - 180°F
Temperature, Pressure Ratings	210°F @ 100 psi.

WattsRadiant™
Floor Heating & Snow Melting

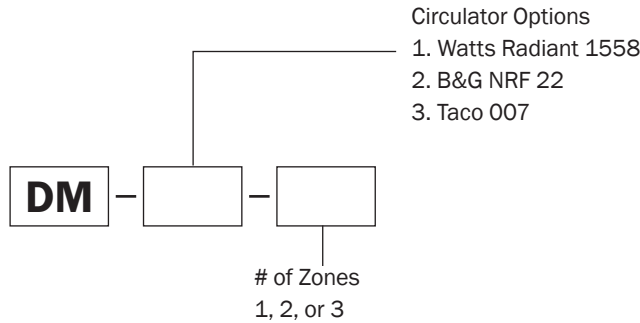
Watts product specifications in U.S. customary units and metric are approximate and are provided for reference only. For precise measurements, please contact Watts Technical Service. Watts reserves the right to change or modify product design, construction, specifications, or materials without prior notice and without incurring any obligation to make such changes and modifications on Watts products previously or subsequently sold.



HydroNex DMix 3 zone panel. DMix panels are available from 1 to 3 zones.



HydroNex DMix 3 zone panel Schematic.



DESCRIPTION	MODEL #	WT. (lbs)	SIZE
1 Zone D-Mix	DM - ____ - 1	60-65	S
2 Zone D-Mix	DM - ____ - 2	80-85	M
3 Zone D-Mix	DM - ____ - 3	95-100	

S = 28" wide x 31.5" tall x 12" deep
M = 40" wide x 31.5" tall x 12" deep