

SmartSense™

Excess Flow Valve with Thermal Shutoff

FOR THE HIGHEST LEVEL OF SAFETY IN GAS APPLIANCE CONNECTIONS



- Protects against excessive gas leaks, fires, and explosions
- Simple installation
- Compatible with most residential gas appliances
- Made in the USA



Choose appliance connector kits with SmartSense technology to protect against the unexpected

KEEP YOUR FAMILY AND HOME SAFE

Dormont.com

Dormont[®]
A WATTS Brand

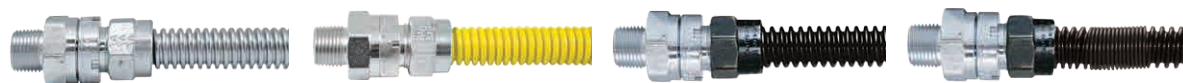


Natural gas has become essential to our everyday lives, be it for cooking meals or heating our homes. While gas line installations and fittings remain relatively safe, Dormont **SmartSense™** technology safeguards your home against unforeseeable gas line hazards. With its unique and innovative design, SmartSense provides your family with the utmost safety and protection they deserve.

Timely detection and reaction to a gas line rupture or fire is critical in protecting your home and family. Our SmartSense could be a life-saving investment, so the next time you connect, Connect with Confidence, Connect with Dormont.

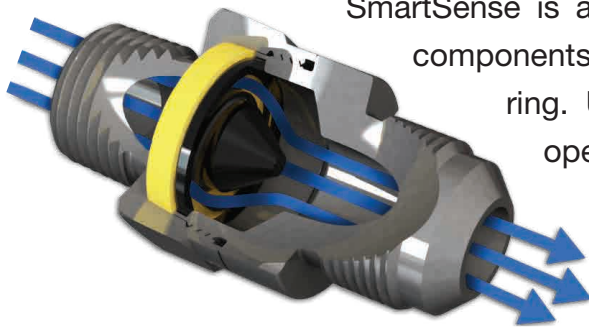


Appliance connector kits with SmartSense EFV-TS (Excess Flow Valve with Thermal Shutoff) technology are available for these applications and more.



	SuprSafe® Stainless Steel	SafetyShield® Yellow Coated	LV® Black Coated	Whisperflex®
Dryer	✓	✓		
Cooktop	✓	✓		
Water heater	✓	✓		
Furnace	✓	✓		
Spaceheater	✓	✓		
Outdoor grill	✓		✓	✓
Outdoor firepit	✓		✓	✓
Fireplace	✓		✓	✓

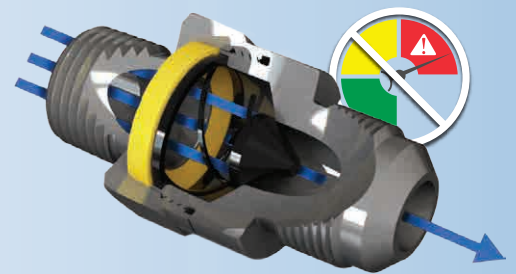
SmartSense™ provides two levels of protection



SmartSense is an intricately-designed valve comprised of two primary components – a gas flow-limiting plunger and thermal shutoff sensing ring. Under normal operating conditions, both parts remain open to allow gas flow at standard flow rates. However, in the event of a gas line rupture, disconnection, or even a fire, SmartSense detects the potential threat and automatically activates to ensure your safety.

1. Excess Flow Limiting

The plunger limits gas flow in the event of a full-line rupture or disconnect, providing protection against excessive gas leaks. Once the gas line is restored and the pressure equalizes, SmartSense will automatically reset to provide the standard rate of flow.



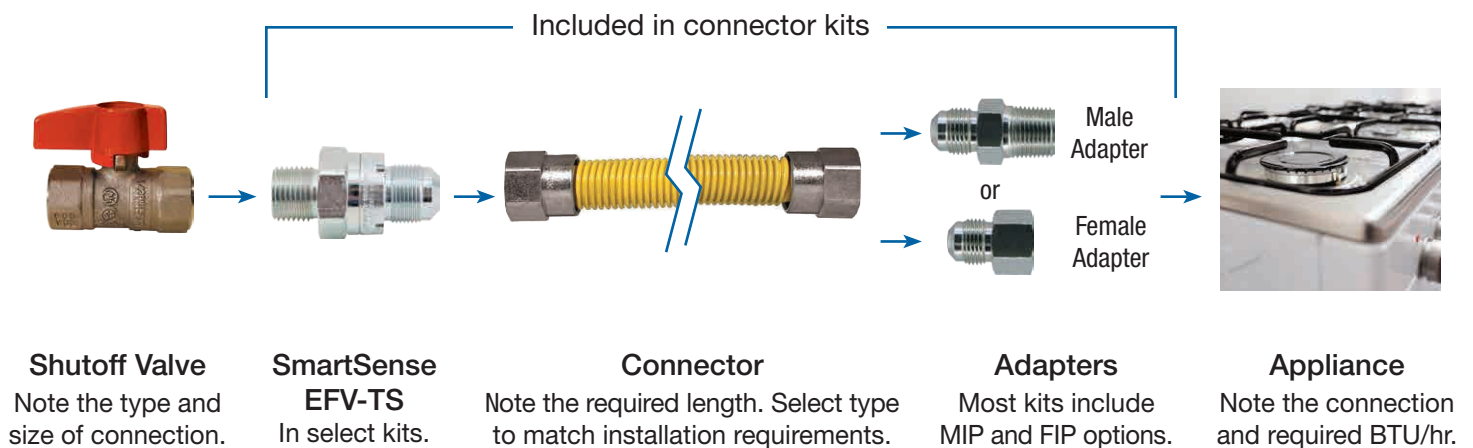
2. Fire Safe Shutoff

The thermal ring expands to stop gas flow when exposed to extreme temperatures. (350°F to 425°F)



Connector Kit Selection

Select gas appliance connector kits by intended use, capacity, connection length, fitting size, and type.



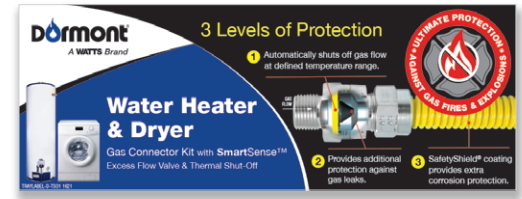
Benefits

- Thermal sensing shutoff mechanism
- Prevents excessive gas leaks, fires, and explosions
- Simple installation
- Compatible with most residential gas appliances
- Made in the USA

Features

- High temperature thermal reaction ring
- High temperature, gas-compatible, flow-limiting plunger
- CSA Certified
- California DSA Certified (CA-DSA 16-F01)
- Commonwealth of Massachusetts Approved

Dormont Gas Connector Kits and accessories are available from your local building supply store and wholesale distributors



SmartSense EFV-TS Specifications

1. Rated Trip Flow and Max Flow Capacity values are kBtu/hr @ max. "w.c. PD (natural gas, 0.64 s.g., 1000 BTU/cu.ft.).
2. A minimum of 5" w.c. inlet pressure is required with a maximum inlet pressure of 14" w.c. (1/2 psig).
3. For more information on flow rates with a specific Dormont gas connector, contact 1-800-DORMONT.
4. Operating temperature: -20°F to 150°F (-29°C to 66°C).
5. Bypass rate: MAX 2.5 SCFH at 0.5 psi.
6. Installation orientation: Multi-poise (horizontal, vertical up, vertical down).
7. EFV Type: EFVB (Bypass with automatic reset).
8. Maximum trip flow is 1.4 times the rated trip flow.
9. Model -TS (Thermal Shutoff) Reaction Temperature Range: 350°F to 425°F (176.7°C to 218.3°C).

	MODEL 90-1031-V1-TS		MODEL 90-1031-V2-TS		MODEL 90-2031-V4-TS		MODEL 90-3041-V5-TS		MODEL 90-303M-V6-TS	
	<i>Rated Trip</i>	<i>Max. Capacity</i>	<i>Rated Trip</i>	<i>Max. Capacity</i>	<i>Rated Trip</i>	<i>Max. Capacity</i>	<i>Rated Trip</i>	<i>Max. Capacity</i>	<i>Rated Trip</i>	<i>Max. Capacity</i>
Horizontal	68 @ 1.05	48 @ 0.30	95 @ 1.55	60 @ 0.40	115 @ 0.70	93 @ 0.35	160 @ 0.80	125 @ 0.25	160 @ 0.80	125 @ 0.25
Vertical Up	105 @ 1.95	65 @ 0.50	115 @ 2.25	80 @ 0.60	145 @ 1.05	118 @ 0.45	185 @ 1.00	150 @ 0.40	185 @ 1.00	150 @ 0.40
Vertical Down	36 @ 0.40	30 @ 0.15	60 @ 0.70	45 @ 0.25	85 @ 0.45	60 @ 0.15	135 @ 0.60	105 @ 0.20	135 @ 0.60	105 @ 0.20
Inlet	1/2" MNPT x 3/8" FNPT		1/2" MNPT x 3/8" FNPT		1/2" MNPT		3/4" MNPT x 1/2" FNPT		1/2" MNPT	
Outlet	3/8" OD Flare		3/8" OD Flare		1/2" OD Flare		5/8" OD Flare (15/16"-16 Threads)		5/8" OD Flare (15/16"-16 Threads)	



USA: Tel: (800) 367-6668 • Fax: (724) 733-4808 • Dormont.com

Canada: Tel: (905) 332-4090 • Fax: (905) 332-7068 • Dormont.ca

Latin America: Tel: (52) 81-1001-8600 • Fax: (52) 81-8000-7091 • Dormont.com