

For Residential and Light Commercial Applications

Job Name _____

Contractor _____

Job Location _____

Approval _____

Engineer _____

Contractor's P.O. No. _____

Approval _____

Representative _____

FlexPlate™

Flexible Heat Transfer Plate

Sizes: For 1/2" RadiantPEX+™ or RadiantPEX-AL™

Watts Radiant's FlexPlate is a lightweight, flexible, heat transfer plate manufactured from a patented, highly conductive graphite material with a plastic forming channel. Easily cut with scissors or a utility knife. FlexPlates are 6" x 4' and are designed for use with Watts Radiant's 1/2" RadiantPEX+ or RadiantPEX-AL.



Specifications

System shall be installed using RadiantPEX+ or RadiantPEX-AL tubing and in accordance with all corresponding installation guidelines.

Description	Property
C6 Heat Transfer Sheet	Directionally Aligned Graphite
Channel	Extruded Polyethylene
Maximum Operating Temp.	180°F
Fastener Type	Staple
Conductivity (approximate)	173 Btu/ft/hr/°F
Sheet Thickness	0.03" (.08 mm)

Installation Parameters

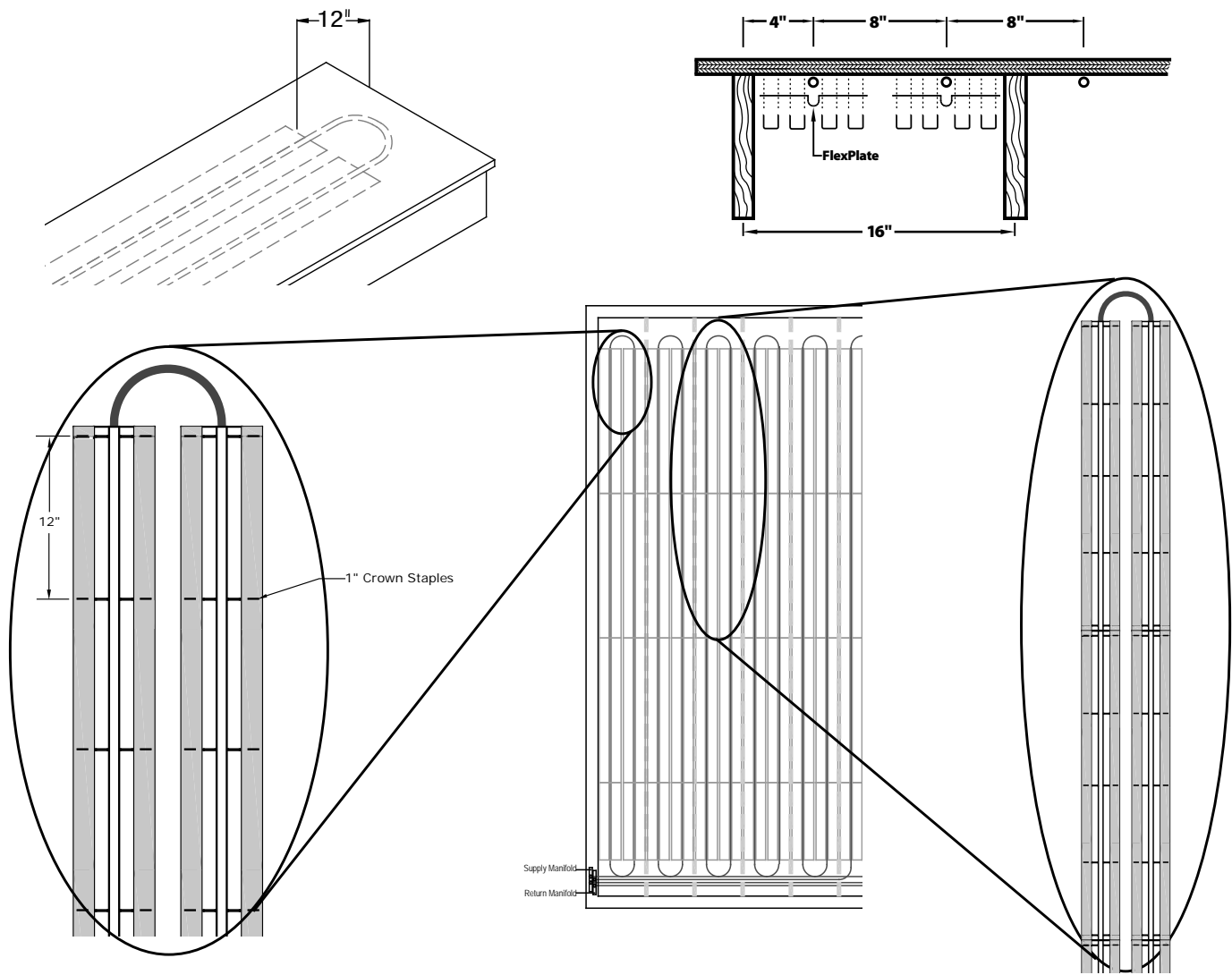
FlexPlate must be installed in accordance with all Watts Radiant installation procedures, including information provided in Watts Radiant's FlexPlate Installation Guideline as well as Watts Radiant's RadiantPEX, RadiantPEX+ & RadiantPEX-AL Installation Manual.

In order to avoid property damage or injury, please refer to the complete installation manual and warnings provided with the product.

√	Model #	Order #	Description	QTY	WT. (lbs)
	FPLT04500-20	81012401	FlexPlate, 6" x 4'	20	13

WattsRadiant™
Floor Heating & Snow Melting

Watts product specifications in U.S. customary units and metric are approximate and are provided for reference only. For precise measurements, please contact Watts Technical Service. Watts reserves the right to change or modify product design, construction, specifications, or materials without prior notice and without incurring any obligation to make such changes and modifications on Watts products previously or subsequently sold.



FlexPlate Installation Details