

## For Commercial And Industrial Applications

Job Name \_\_\_\_\_  
 Job Location \_\_\_\_\_  
 Engineer \_\_\_\_\_  
 Approval \_\_\_\_\_  
 Tag \_\_\_\_\_

Contractor \_\_\_\_\_  
 Approval \_\_\_\_\_  
 Contractor's P.O. No. \_\_\_\_\_  
 Representative \_\_\_\_\_

# Pipe

## Socket Plugs & Transition Couplings

### SPECIFICATION:

BLÜCHER Pipe AISI Type 316L (standard) stainless steel pipe system, with Push-Fit socket connections with EPDM (standard) sealing ring. All BLÜCHER Pipe to be treated with pickling and passivation finish process.

### Dimensional Chart Push-In Socket Plug

MODEL NO.	D	D1	H
PSP-1.5	1.5"(40)	2"(50)	1-7/8"(47)
PSP-2	2"(50)	2-5/16"(58)	2"(50)
PSP-3	3"(75)	3-3/8"(85)	1-13/16"(45)
PSP-4	4"(110)	4-3/4"(120)	1-13/16"(45)
PSP-6	6"(160)	6-11/16"(170)	1-13/16"(45)
PSP-8	8"(200)	8-1/4"(210)	2"(50)
PSP-10	10"(250)	10-7/16"(265)	2-9/16"(65)

### Dimensional Chart Compression Socket Plug

Model No.	D	D1	H
CSP-2	2"(50)	2-3/8"(59)	1-1/4"(31)
CSP-3	3"(75)	3-5/16"(83)	1-7/16"(36)
CSP-4	4"(110)	4-11/16"(118)	1-7/16"(36)
CSP-6	6"(160)	6-11/16"(170)	1-13/16"(45)

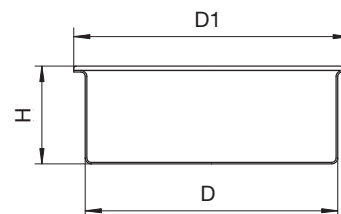
### Transition Couplings

Model No. 316L	BLÜCHER	Cast Iron	Sch40
BTC-2x2	2"(50)	2"	2"
BTC-3x3-NH	3"(75)	3"	
BTC-3x3-SCH40	3"(75)		3"
BTC-4x4-NH	4"(110)	4"	
BTC-4x4-SCH40	4"(110)		4"
BTC-6x6-NH	6"(160)	6"	
BTC-6x6-SCH40	6"(160)		6"

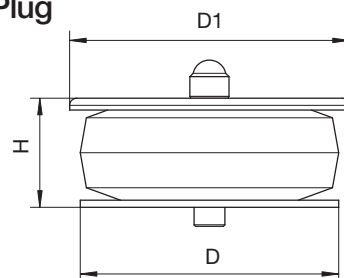
### NOTICE

The information contained herein is not intended to replace the full product installation and safety information available or the experience of a trained product installer. You are required to thoroughly read all installation instructions and product safety information before beginning the installation of this product.

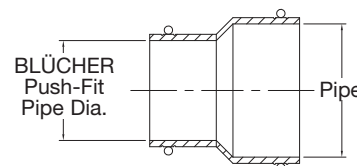
### Push-In Socket Plug



### Compression Socket Plug



### Transition Couplings



### Approvals



Compliance with NSF/ANSI/3-A 14159-1-Hygiene Requirements for the Design of Meat and Poultry Processing Equipment



\* Product is certified to the uniform plumbing code ASME A112.6.3



**A WATTS Brand**